



SCALE: 1" = 40'

SHEET 2 OF 5 SHEETS

# TRACT NO. 82395

IN THE CITY OF CARSON, COUNTY OF LOS ANGELES, STATE OF CALIFORNIA  
FOR CONDOMINIUM PURPOSES



..... INDICATES THE BOUNDARY OF THE LAND BEING SUBDIVIDED BY THIS MAP

## LEGEND NOTES

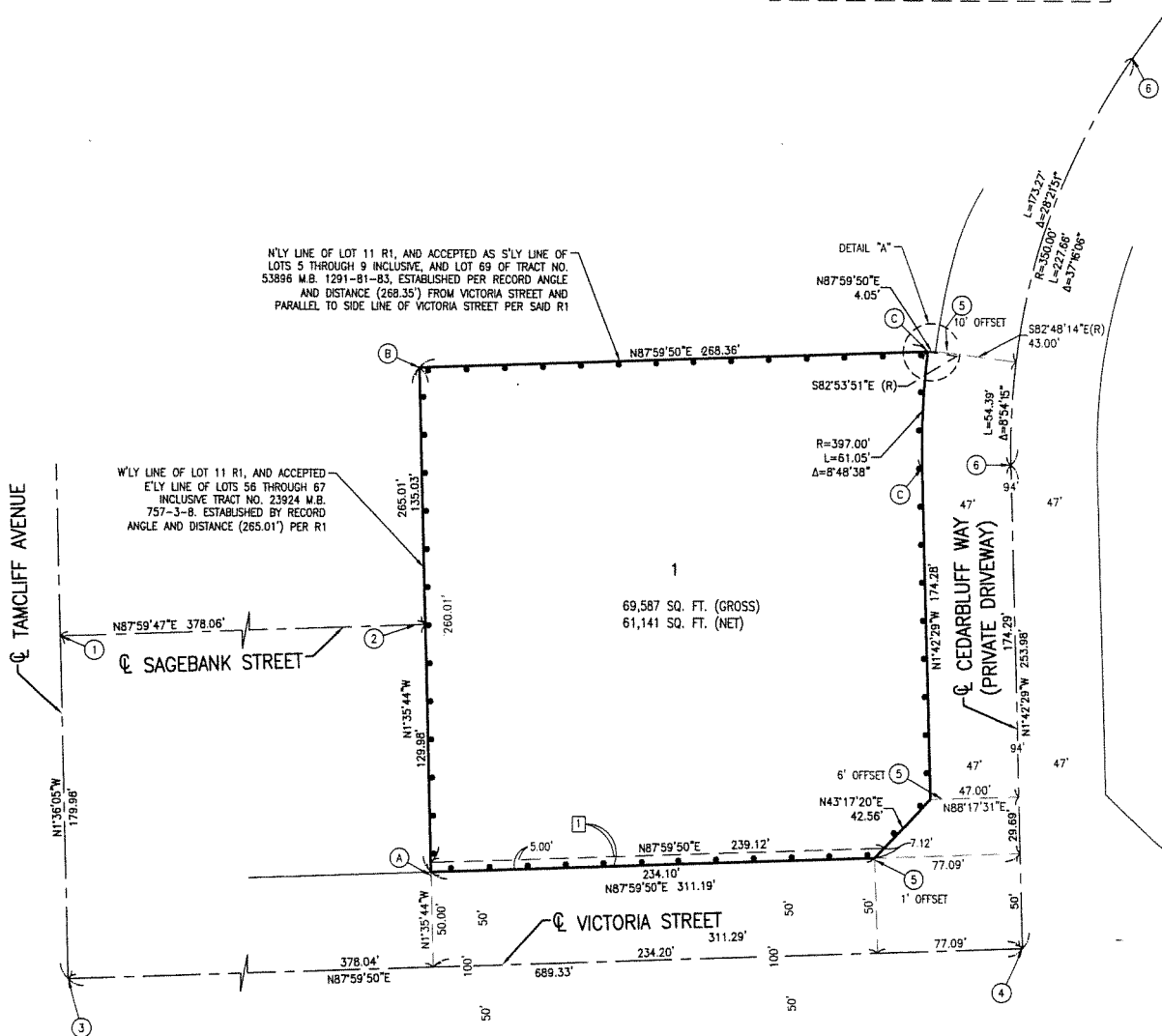
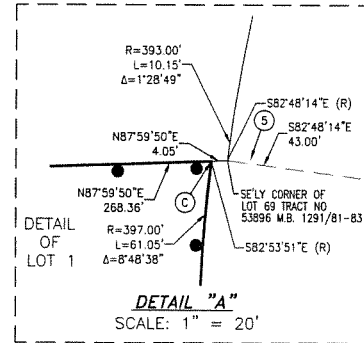
- SFN SEARCHED, FOUND NOTHING
- (A) SET LT&TAG LS 9309 AT 2.0 FOOT OFFSET ON PROPERTY LINE PROD
- (B) SET LT&TAG LS 9309 ON TOP OF WALL
- (C) SET 2" IRON PIPE WITH CEMENT PLUG, TAGGED LS 9309, FLUSH
- R1 RECORD DATA PER TRACT NO. 52103 MB 1224/17-21

## MONUMENT NOTES

- (1) SFN, ESTABLISHED A RECORD ANGLE AND DISTANCE FROM (3) & (4)
- (2) FOUND LEAD TACK, NO TAG, ACCEPTED AS CENTERLINE REFERENCE POINT PER TRACT NO. 23924, MB 757/3-8
- (3) FOUND GEAR SPIKE & WASHER, STAMPED LS 5411, PER PWF 0620/1642-1643
- (4) FOUND SPIKE & WASHER, PLS "6941", ACCEPTED AS CENTERLINE INTERSECTION PER TRACT NO. 52103 MB 1224/17-21
- (5) FOUND LEAD TACK & TAG, PLS "5134"
- (6) FOUND GEAR SPIKE AND WASHER STAMPED LS 6941, PER R1, FLUSH

## EASEMENT NOTES

- (1) 5' WIDE EASEMENT FOR PEDESTRIAN ACCESS AND DEDICATED, PER TRACT NO. 5203 MB 1224/17-21 OF OFFICIAL RECORDS.



SCALE: 1" = 20'

SHEET 3 OF 5 SHEETS

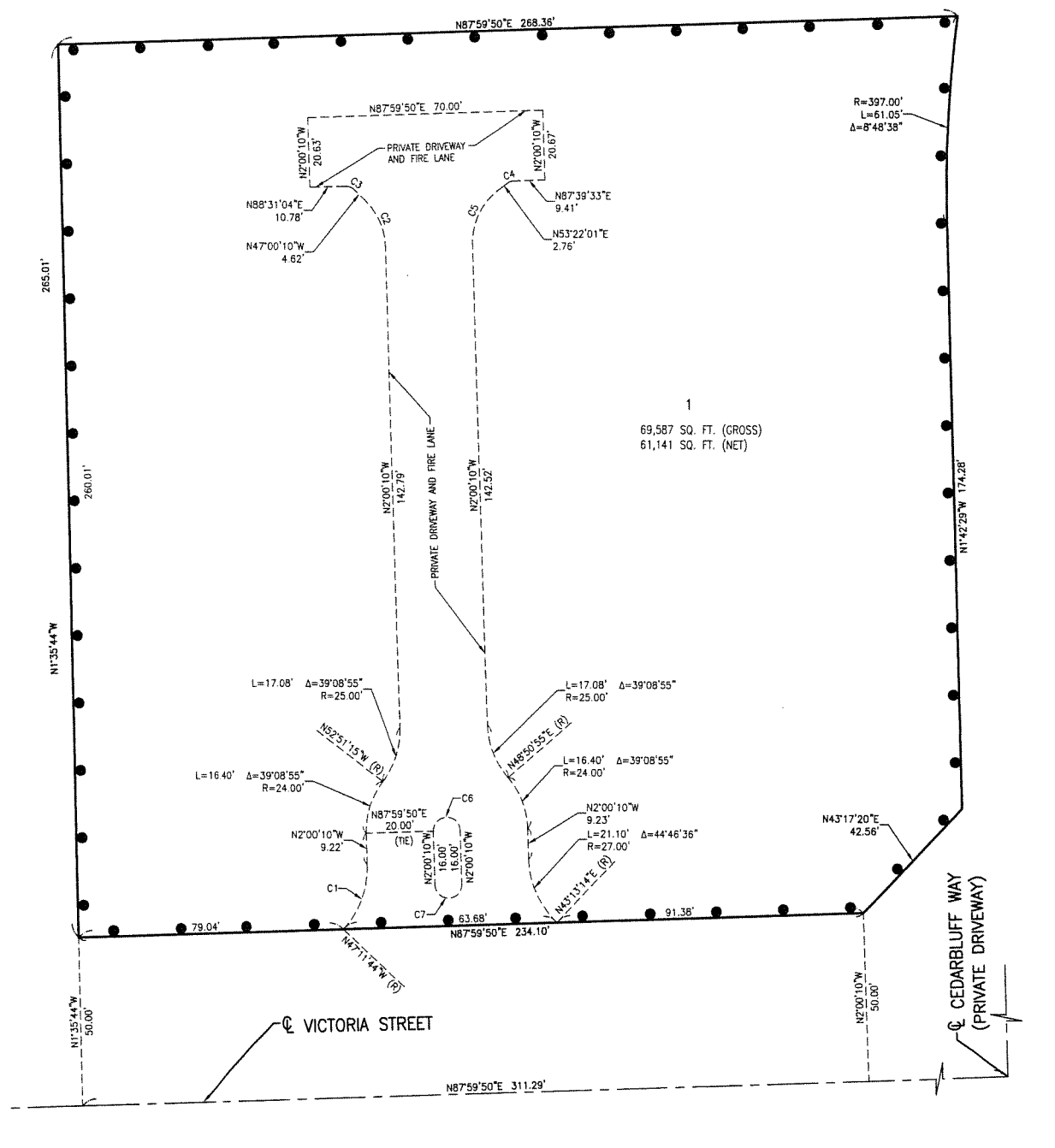
TRACT NO. 82395

IN THE CITY OF CARSON, COUNTY OF LOS ANGELES, STATE OF CALIFORNIA  
FOR CONDOMINIUM PURPOSES



CURVE TABLE			
CURVE #	LENGTH	RADIUS	DELTA
C1	21.11'	27.00'	44°48'26"
C2	15.71'	20.00'	45°00'00"
C3	2.33'	3.00'	44°28'46"
C4	1.80'	3.00'	34°17'32"
C5	19.33'	20.00'	55°22'11"
C6	12.57'	4.00'	180°00'00"
C7	12.57'	4.00'	180°00'00"

INDICATES THE BOUNDARY OF THE LAND BEING  
SUBDIVIDED BY THIS MAP



SCALE: 1" = 20'

SHEET 4 OF 5 SHEETS

TRACT NO. 82395

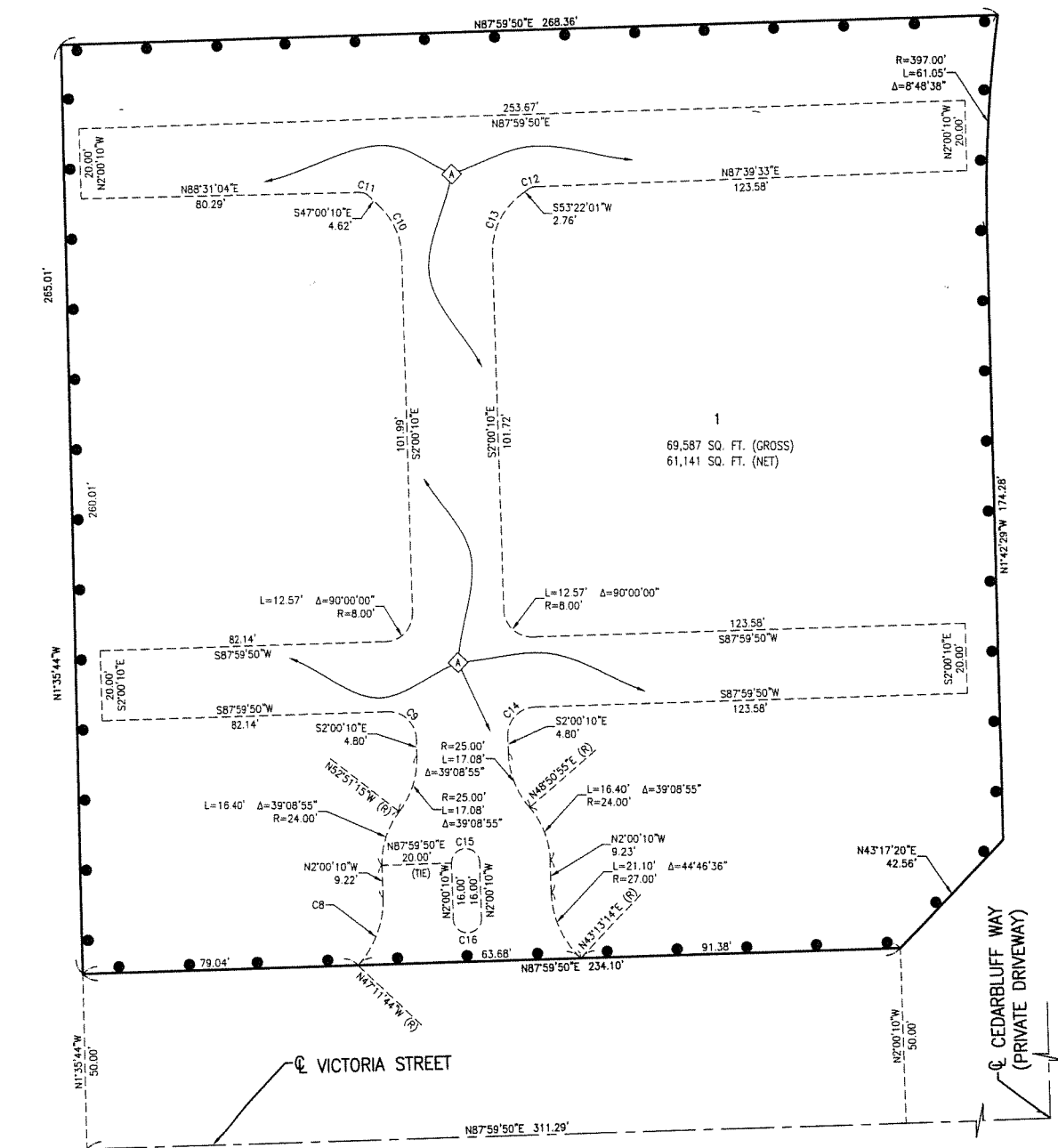
IN THE CITY OF CARSON, COUNTY OF LOS ANGELES, STATE OF CALIFORNIA  
FOR CONDOMINIUM PURPOSES



CURVE TABLE			
CURVE #	LENGTH	RADIUS	DELTA
C8	21.11'	27.00'	44°48'26"
C9	12.57'	8.00'	90°00'00"
C10	15.71'	20.00'	45°00'00"
C11	2.33'	3.00'	44°28'46"
C12	1.80'	3.00'	34°17'32"
C13	19.33'	20.00'	55°22'11"
C14	12.57'	8.00'	90°00'00"
C15	12.57'	4.00'	180°00'00"
C16	12.57'	4.00'	180°00'00"

●●●● INDICATES THE BOUNDARY OF THE LAND BEING  
SUBDIVIDED BY THIS MAP

**A** AN EASEMENT TO THE CITY OF CARSON FOR  
SANITARY SEWER, PUBLIC UTILITY, AND  
EMERGENCY VEHICLE INGRESS AND EGRESS  
PURPOSES.





IN THE CITY OF CARSON, COUNTY OF LOS ANGELES, STATE OF CALIFORNIA  
FOR CONDOMINIUM PURPOSES

INDICATES THE BOUNDARY OF THE LAND BEING  
SUBDIVIDED BY THIS MAP

10' WIDE EASEMENT TO THE CITY OF CARSON  
FOR SEWER PURPOSES

