



5 10x20 cantilevered shade structure with benches



6 28' hex fabric shade shelter with picnic tables



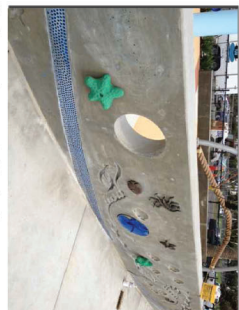
7 24' shade structure with picnic tables



8 BBQ/hot coal receptacle unit



- LEGEND**
- COLORED SAFETY SURFACING
 - WOOD CHIPS
 - PLANTING AREAS
 - DECORATIVE CONCRETE
 - NEW CONCRETE



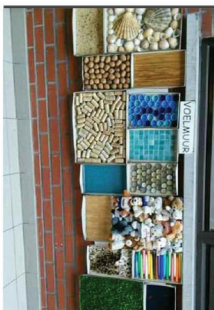
1 Sensory elements on inside of wall



2 Examples of sensory ground textures

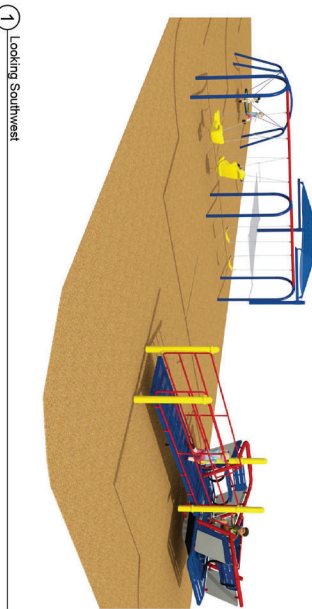
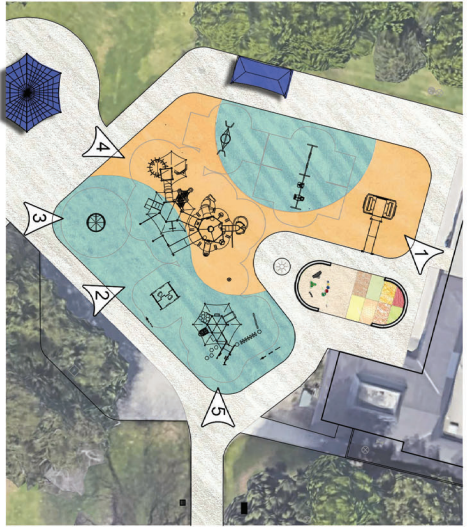


3 Freeform interactive play instruments



4 Examples of sensory wall textures

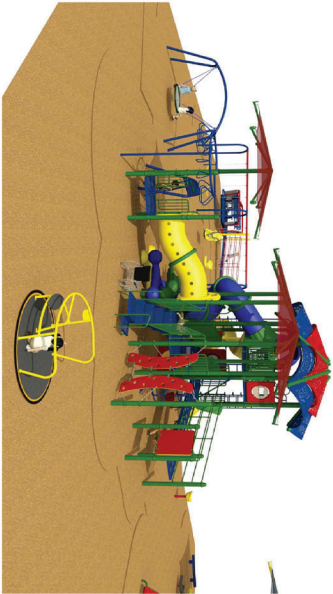




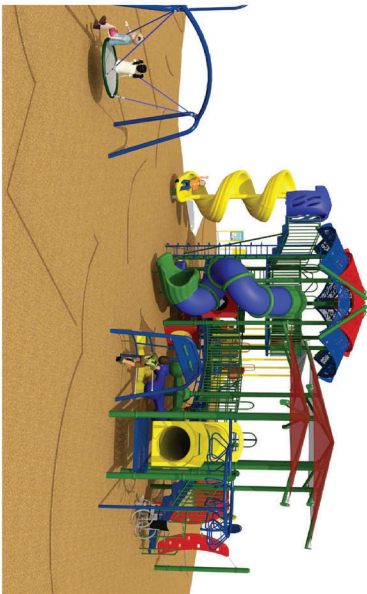
1 Looking Southwest



2 Looking Northeast



3 Looking North



4 Looking Northeast



5 Looking West

ACCESSIBLE RAMP NOTE:
RAMP AND PLAY SURFACE WILL BE
ADJUSTED TO MEET ADA REQUIREMENTS



Dolphin Park

Carson, California

Play Equipment Option - 1



June 4, 2019



5 10x20 cantilevered shade structure with benches



6 28' hex fabric shade shelter with picnic tables



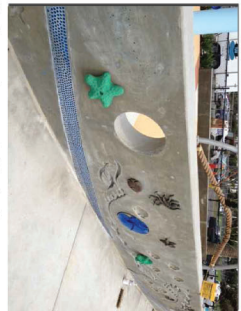
7 24' shade structure with picnic tables



8 BBQ/hot coal receptacle unit



- LEGEND**
- COLORED SAFETY SURFACING
 - WOOD CHIPS
 - PLANTING AREAS
 - DECORATIVE CONCRETE
 - NEW CONCRETE



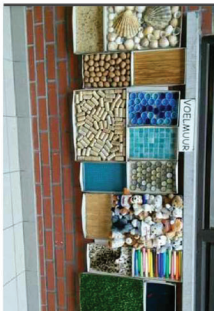
1 Sensory elements on inside of wall



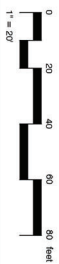
2 Examples of sensory ground textures



3 Freeform interactive play instruments



4 Examples of sensory wall textures

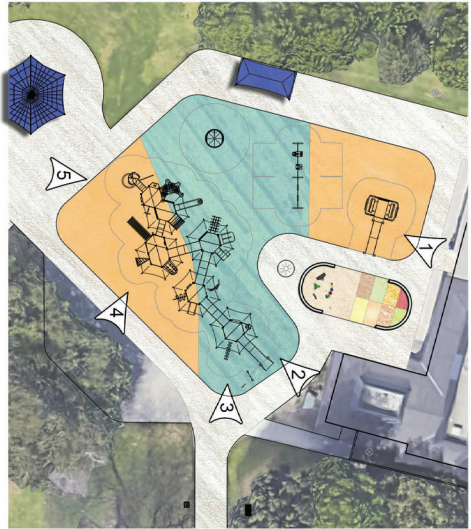


Dolphin Park
Carson, California

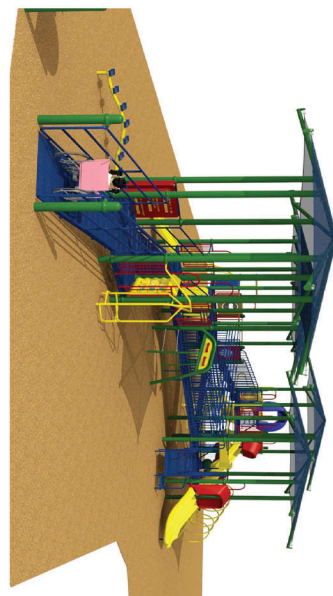
Concept Plan - 3

June 4, 2019





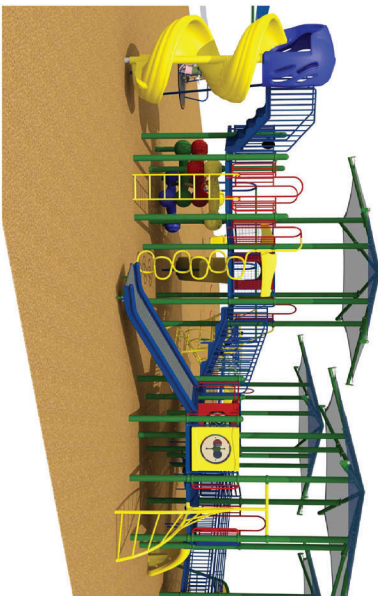
1 Looking Southwest



2 Looking Southwest



3 Looking West



4 Looking Northwest



5 Looking North

ACCESSIBLE RAMP NOTE:
RAISED RAMP SURFACE WILL BE
ADJUSTED TO MEET ADA REQUIREMENTS



Dolphin Park

Carson, California

Play Equipment Option - 3



June 4, 2019