



# City of Carson

## STUDY AREA PROFILE

STUDY AREA ID #161

- BASE MAP
- PARK METRICS
- WHERE ARE PARKS MOST NEEDED
- AMENITY QUANTITIES AND CONDITIONS
- PARK NEEDS FRAMEWORK
- PROJECT COST ESTIMATES
- PROJECT REPORTING FORM
- COMMUNITY ENGAGEMENT FORM

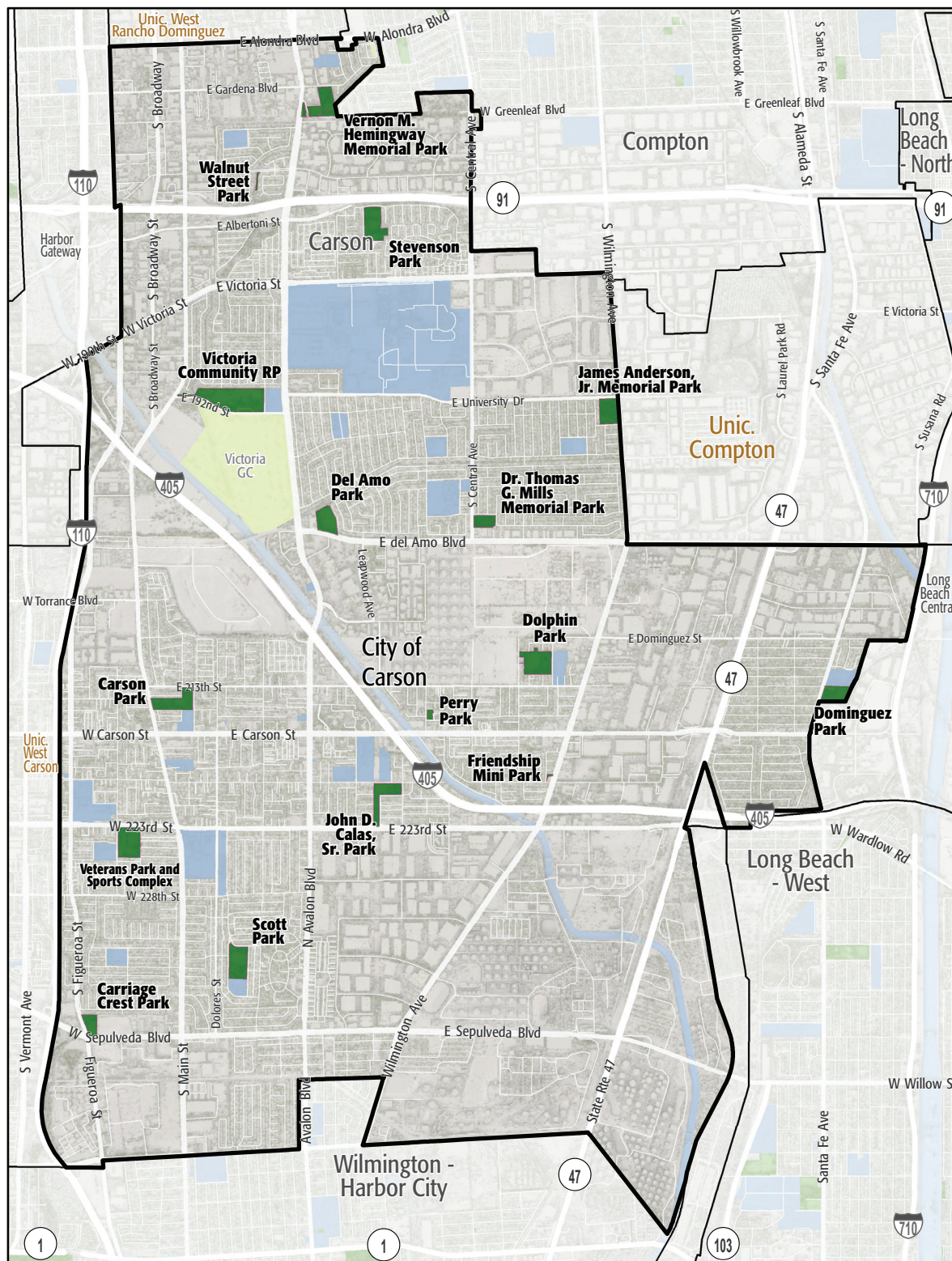


Los Angeles Countywide Comprehensive Park & Recreation Needs Assessment  
APPENDIX A

EXHIBIT NO. 1e



# STUDY AREA BASE MAP



City of Carson

- Existing Park
- Existing Park Outside Study Area
- Existing School
- Other Open Space

# PARK METRICS



## PARK LAND: Is there enough park land for the population?

**141.6** PARK ACRES  
within study area

**92,675**  
POPULATION

**1.5** PARK ACRES  
PER 1,000

The county average is 3.3 park acres per 1,000

## PARK ACCESSIBILITY: Is park land located where everyone can access it?

**51%** of population living  
WITHIN 1/2 MILE  
of a park

The county average is 49% of the population living  
within 1/2 mile of a park

## PARK PRESSURE

How much park land is available to residents in the area around each park?

**Carriage Crest Park (4.85 Acres)**  
0.71 park acres per 1,000

**Carson Park (10.83 Acres)**  
0.75 park acres per 1,000

**Del Amo Park (8.62 Acres)**  
2.33 park acres per 1,000

**Dolphin Park (12.64 Acres)**  
6.87 park acres per 1,000

**Dominguez Park (7.63 Acres)**  
1.03 park acres per 1,000

**Dr. Thomas G. Mills Memorial Park (4.98 Acres)**  
0.91 park acres per 1,000

**Friendship Mini Park (0.28 Acres)**  
0.12 park acres per 1,000

**James Anderson, Jr. Memorial Park (8.44 Acres)**  
1.99 park acres per 1,000

**John D. Calas, Sr. Park (9.23 Acres)**  
1.06 park acres per 1,000

**Perry Park (1.16 Acres)**  
0.38 park acres per 1,000

**Scott Park (11.28 Acres)**  
0.77 park acres per 1,000

**Stevenson Park (11.83 Acres)**  
2.55 park acres per 1,000

**Vernon M. Hemingway Memorial Park (11.91 Acres)**  
4.32 park acres per 1,000

**Veterans Park and Sports Complex (12.31 Acres)**  
1.23 park acres per 1,000

**Victoria Community Regional Park (24.96 Acres)**  
3.34 park acres per 1,000

**Walnut Street Park (0.69 Acres)**  
0.25 park acres per 1,000



# WHERE ARE PARKS MOST NEEDED?

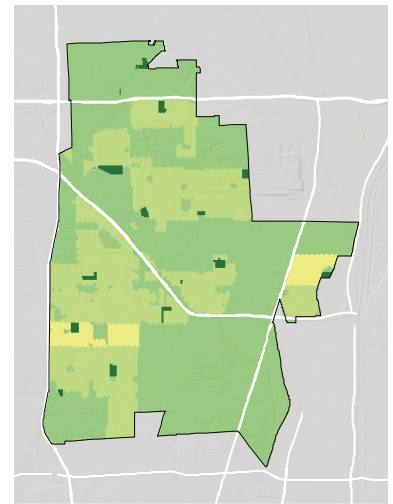
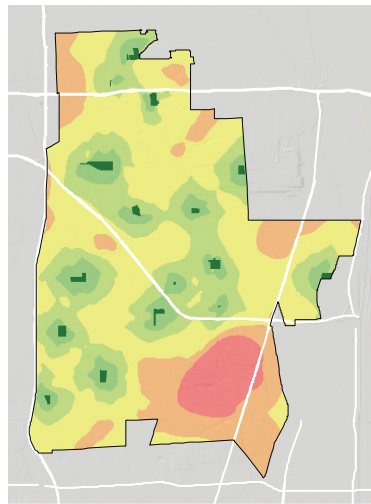
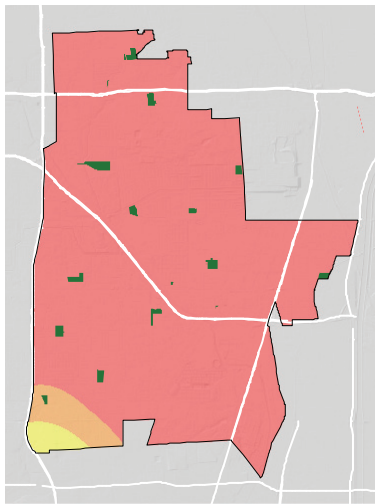
PARK ACRE NEED

+

DISTANCE TO PARKS

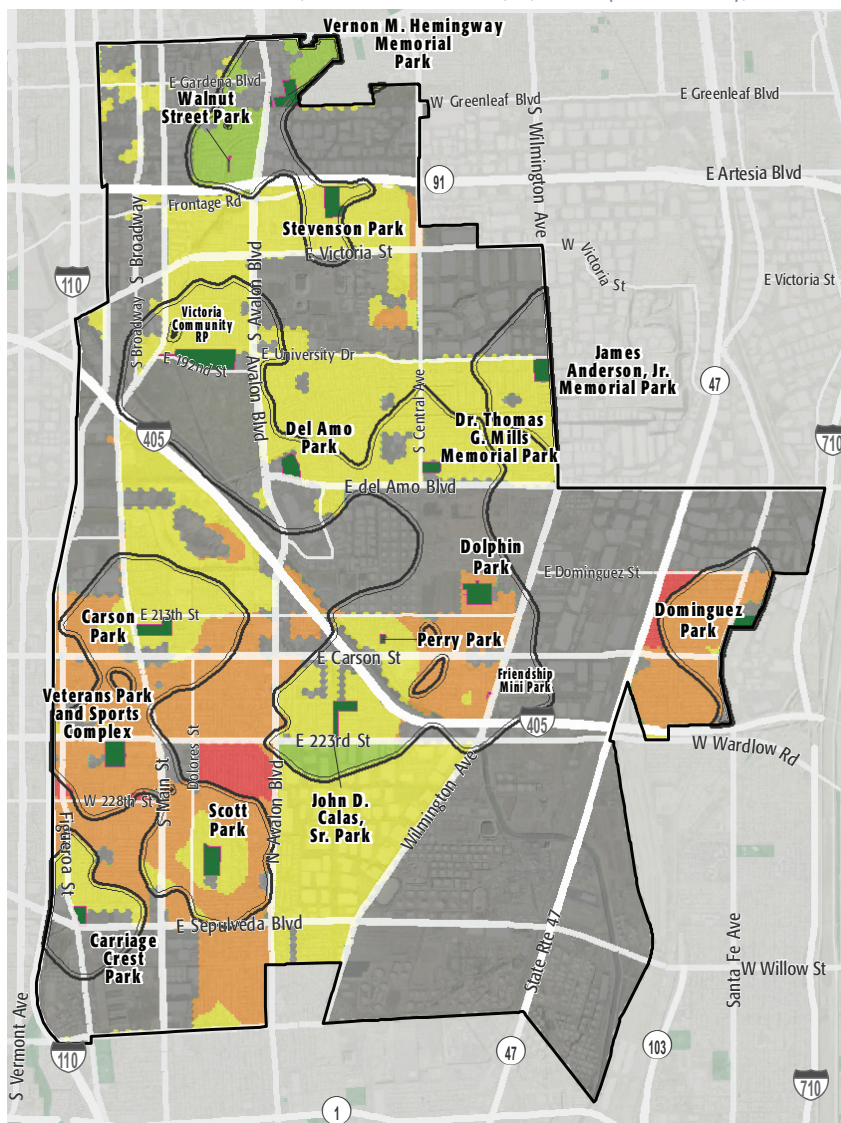
+

POPULATION DENSITY



= PARK NEED

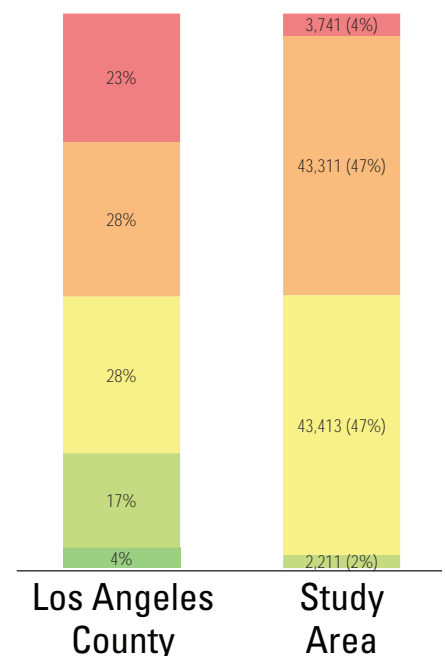
\*Calculated using the following weighting: (20% x Park Acre Need) + (20% x Distance to Parks) + (60% x Population Density)



## PARK NEED CATEGORY

- Very High
- High
- Moderate
- Low
- Very Low
- No Population
- Area within 1/2 mile walk of a park

## HOW MANY PEOPLE NEED PARKS?



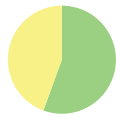
## AMENITY QUANTITIES AND CONDITIONS

Park Name	Condition	General Infrastructure Condition	Open Lawn/ Turf Area	Amenities																
				Tennis Courts	Basketball Courts	Baseball Fields	Soccer Fields	Multipurpose Fields	Fitness Zones	Skate Parks	Picnic Shelters	Playgrounds	Swimming Pools	Splash Pads	Dog Parks	Gymnasiums	Community/Rec Centers	Senior Centers	Restrooms	Total
Carriage Crest Park	Good											1							1	
	Fair				1	2	1	1			2						1	2	10	
	Poor																		0	
Carson Park	Good				1				1		3		1	1		1	1		10	
	Fair					2	2	2				1							7	
	Poor																		0	
Del Amo Park	Good																		0	
	Fair				2	2	2	2			1						1	1	11	
	Poor											1							1	
Dolphin Park	Good						2		1										3	
	Fair			2	2	2		2				1					1	2	12	
	Poor																		0	
Dominguez Park	Good				2				1				1						4	
	Fair			2		3	2	2			1	1					1	1	13	
	Poor																		0	
Dr. Thomas G. Mills Memorial Park	Good								1										1	
	Fair				1						2	1					1		5	
	Poor										1								1	

### AMENITY CONDITIONS SUMMARY



Carriage Crest Park



Carson Park



Del Amo Park



Dolphin Park



Dominguez Park



Dr. Thomas G. Mills Memorial Park

## AMENITY QUANTITIES AND CONDITIONS

Park Name	Condition	General Infrastructure Condition	Open Lawn/ Turf Area	Amenities																
				Tennis Courts	Basketball Courts	Baseball Fields	Soccer Fields	Multipurpose Fields	Fitness Zones	Skate Parks	Picnic Shelters	Playgrounds	Swimming Pools	Splash Pads	Dog Parks	Gymnasiums	Community/Rec Centers	Senior Centers	Restrooms	Total
Friendship Mini Park	Good																			0
	Fair											1								1
	Poor																			0
James Anderson, Jr. Memorial Park	Good			4					1											5
	Fair				2						3	1					1		1	8
	Poor																			0
John D. Calas, Sr. Park	Good								1											1
	Fair			2	2	2	1	1				1					1		1	11
	Poor																			0
Perry Park	Good																			0
	Fair											1								1
	Poor																			0
Scott Park	Good								1			1								2
	Fair			2	2	3	2	2			1					1	1		2	16
	Poor												1							1
Stevenson Park	Good															1				1
	Fair			2	2	2	2	2	1		2	2					2		2	19
	Poor																			0

### AMENITY CONDITIONS SUMMARY



Friendship Mini Park



James Anderson, Jr. Memorial Park



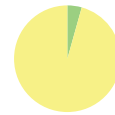
John D. Calas, Sr. Park



Perry Park



Scott Park



Stevenson Park

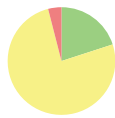
## AMENITY QUANTITIES AND CONDITIONS

Park Name	Condition	General Infrastructure Condition	Open Lawn/ Turf Area	Amenities																
				Tennis Courts	Basketball Courts	Baseball Fields	Soccer Fields	Multipurpose Fields	Fitness Zones	Skate Parks	Picnic Shelters	Playgrounds	Swimming Pools	Splash Pads	Dog Parks	Gymnasiums	Community/Rec Centers	Senior Centers	Restrooms	Total
Vernon M. Hemingway Memorial Park	Good								1			1	1						3	
	Fair			2	1	2	2	2			3						1		2	15
	Poor																		0	
Veterans Park and Sports Complex	Good					2			1							2			5	
	Fair			2	4		2	2		1		1					2		2	16
	Poor																		0	
Victoria Community Regional Park	Good																		0	
	Fair			2							1		2			1	1		7	
	Poor				2	3						1						4	10	
Walnut Street Park	Good											1							1	
	Fair				2						1								3	
	Poor																		0	
Totals:	Good			4	3	2	2	0	9	0	3	4	3	1	0	4	1	0	1	37
	Fair			16	21	20	16	18	1	1	17	11	2	0	0	2	14	0	16	155
	Poor			0	2	3	0	0	0	0	1	2	1	0	0	0	0	0	4	13

### AMENITY CONDITIONS SUMMARY



Vernon M. Hemingway Memorial Park



Veterans Park and Sports Complex



Victoria Community Regional Park



Walnut Street Park

Miles of trails inside parks: 7

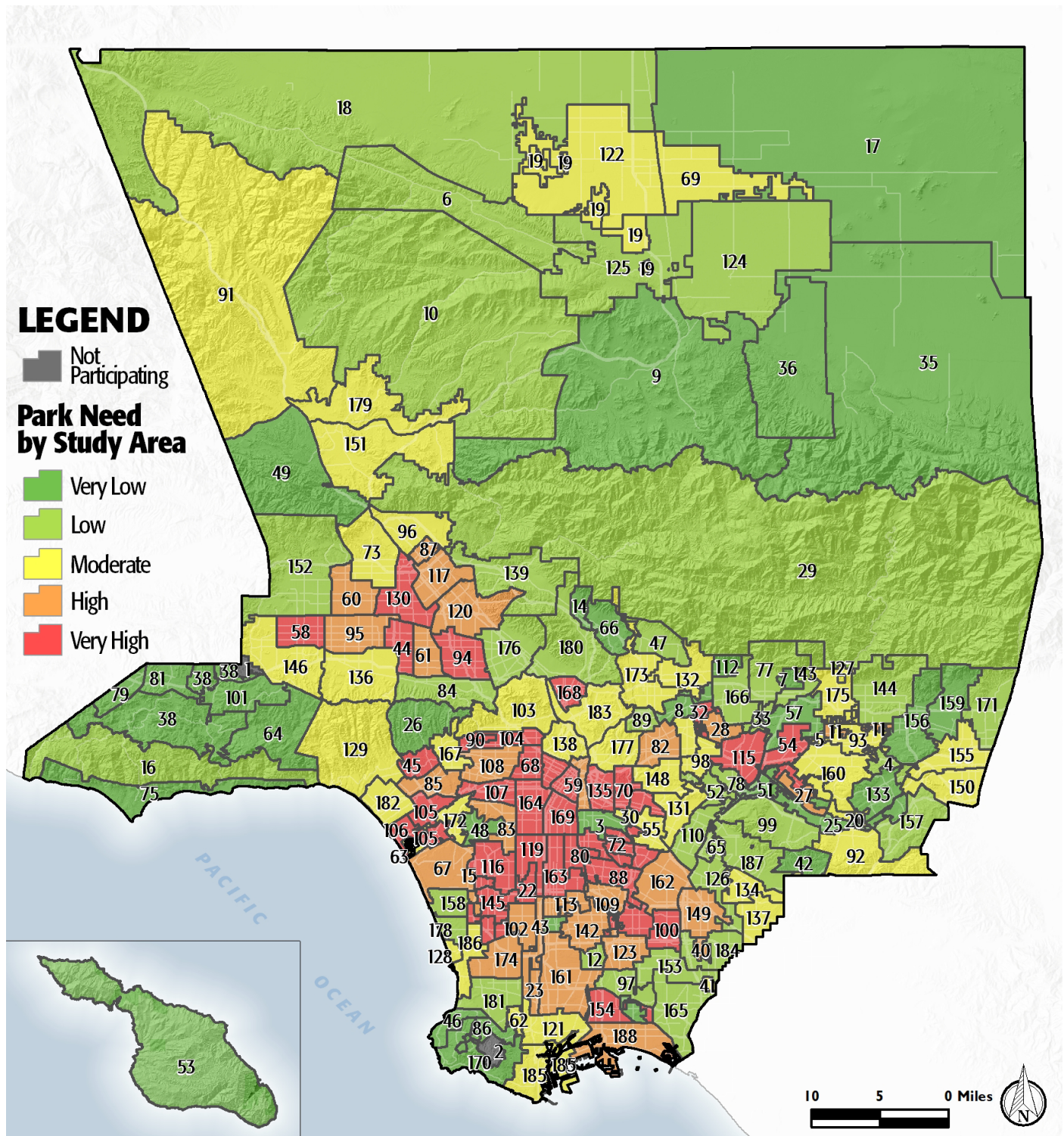
Miles of trails outside of parks: 0



## PARK NEEDS FRAMEWORK: COUNTYWIDE ASSESSMENT OF NEED

The results of the analysis of the park metrics were used to determine an overall park need level for each Study Area. Please refer to Section 3.0 Park Needs Framework of the main report for additional information.

City of Carson (#161) has a high park need.



# PROJECT COST ESTIMATES



**Study Area:**  
City of Carson

Study Area ID  
161

## Prioritized Projects

Project Number	Project Description	Cost
1	Replace Lighting- LED Conversion at All Parks in Study Area	\$1,542,024
2-4	Build New Neighborhood Park	\$7,077,961
	New Park Tasks:	
	Land Acquisition	\$2,852,761
	Infrastructure/General	\$3,280,000
	Dog Parks	\$695,200
	Picnic Shelters	\$250,000
5-7	Build New Park	\$13,012,696
	New Park Tasks:	
	Land Acquisition	\$2,852,761
	Infrastructure/General	\$3,280,000
	Community/Recreation Center	\$6,300,000
	Generic Amenity	\$579,935
8	Repair Concession Stand/Snack Bar at Calas, Carson, Dolphin, Dominguez, Hemingway, Scott, Stevenson & Veterans Parks	\$5,040
9	Replace Wading Pool at TBD Location	\$328,000
10	Add Splash Pads at TBD Location	\$1,500,000
Study Area Total Costs		
	TOTAL COST FOR PRIORITIZED PROJECTS	\$23,465,721
	TOTAL DEFERRED MAINTENANCE*	\$54,320,326
	Replace amenities in "poor" condition	\$28,080,965
	Repair amenities in "fair" condition	\$26,239,361
	GRAND TOTAL	\$77,786,047

*Each Study Area prioritized 10 projects. These project lists are not intended to supersede or replace any planning documents, nor to obligate the lead agency to implement these projects. For further discussion of projects, please refer to the "Potential Park Projects and Cost Estimates" section of the report.*

*\*Does not include repairs or replacement projects listed as prioritized projects.*