



**Community Services Department  
Dog Park (and other) Options  
February 5, 2019**

## **Some Facts About Dogs (and their owners)**

The first dedicated dog park opened in Berkley, CA in 1986

Dog parks are the fastest-growing segment of city parks

Almost 48% of American households own a dog (60.2M of 126.2M)

There are more American households with dogs than with kids

There are about 90,000,000 dogs in the US – 1 for every 3.6 people

## Some Facts About Dogs (and their owners)

Using this average, Carson would project to have about  
25,800 dogs

Only 60% of dog owners pick up after their dogs, but the vast majority do at dog parks and dog runs and are more likely to do so if there are available dog waste bags (LiveScience.com, April 10, 2014)

The top 10 cities by population in California  
allow on leash dogs in parks

## Options (stand alone or layered)

Off Leash Dog Park Construction  
On Leash Ordinance Changes  
Off Leash Dog Run

---



## Dog Parks



Redondo Beach Dog Park  
3 acres opened in 1993

190 Flagler Lane  
Redondo Beach, CA 90278

## Dog Parks

Flora Vista Dog Park  
1/3 acre opened in 2015  
\$265,000

9203 Flora Vista St,  
Bellflower, CA 90706



## Dog Parks



Signal Hill Dog Park  
½ acre opened March 2018  
\$320,000

3100 California Ave  
Signal Hill, CA 90755

## Dog Parks

### Pros

- Safe area for exercise
- Socialization for dog owners
- Information hub
- No conflict with regular park use
- Popular – 40% increase in parks since 2009 (The Trust for Public Land)

### Cons

- Potential of negative interactions
- Health/Sanitation issues
- Location
- Cost (\$250,000 and up – some \$1M or more)



# Potential Dog Park Site

S. Figueroa St between  
W Del Amo Bl and W Francisco St



Each section just under 1 acre  
(approx. 100' x 400')

Southern portion is "closer" to  
homes

Approximately \$8,000/year to  
lease from LADWP

Will need ground remediation,  
lighting, and water line work



Closest homes to site are located on corner of Del Amo and Vermont (Torrance 90502)

Closest Carson homes are slightly further away  
(Vista Del Loma Mobile Estates)

## Potential Dog Park Site





## On Leash at Parks

Surrounding areas that allow dogs in public parks:

Torrance, Long Beach, Lomita, Los Angeles, Compton,  
Cerritos, Manhattan Beach, Los Angeles County Parks

Common requirements are on a leash no more than 6 ft.  
in length, vaccinated, licensed, clean up after, and not  
allowed on athletic fields. Some specify marked paths.

It is common to provide dog waste bags at on leash parks

## On Leash at Parks Dog Walk Path



Polliwog Park  
1601 Manhattan Beach Blvd  
MB, CA 90266

"Walk through"



## On Leash at Parks Dog Walk Path



Citizen Suggestion  
for Dolphin Park  
potential dog path

A - Dog waste  
station

B - Dog friendly  
water station

< and > - 2 rows of  
directional  
arrows/paws

## On Leash at Parks

### Pros

- Least expensive option
- Increased public park "patrol"
- Increased park usage by dog walkers, especially seniors
- Health and Wellness
- Option of a dog path

### Cons

- Potential for confrontations
- Health/Sanitation concerns



## Dog Runs



Polliwog Park Dog Run  
About 25' x 200'  
"Off Leash"



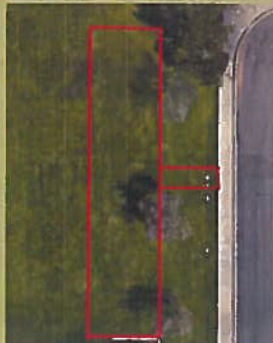
## Dog Runs



Calas Park potential  
dog run site  
About 30' x 150'

5 ft. fenced in off leash

Lighting and water lines  
present



## Dog Runs

### Pros

- Much less costly than dog park (<\$50,000)
- On existing park(s)
- Compromise between dog park and on leash ordinance change
- “Destination” place for area walks
- Off leash but inside fenced area
- Multiple potential sites

### Cons

- Smaller shared space than dog park
- Increased maintenance cost
- Will take away some area of space on existing park

## Resources

- November 2, 2018 issue of Parks & Recreation magazine “Barks & Recreation”
- The Trust for Public Land [www.tpl.org](http://www.tpl.org)
- Whole Dog Journal [www.whole-dog-journal.com](http://www.whole-dog-journal.com)





Questions?