



S/F MARQUEE POLE SIGN / 1/4"=1'- 0"  
OPTION "B"

  
 962 W. Foothill Blvd., Azusa, CA 91702  
 (626) 969-2222 fax (626) 969-5511

Title	Salesman TS	Designer Mark Garcia	<p>This is an original drawing created by CUSTOM SIGNS, INC.          The information contained in this document is confidential work-product material and is intended for the eyes of the designated recipient only.          If you are not the designated recipient, you are hereby notified that any unauthorized review, dissemination, distribution or copying of this document, and that which is transmitted herewith, is strictly prohibited.          Client agrees to pay 25% of the retail selling price of this display upon demand hereof, if said original design is used or reproduced in whole or in part.</p>
VETERANS PARK	Drawing Date	4-21-23	
Location	Client Approval	Date	
22400 MONETA AVE CARSON, CA 90745			



Thank you for giving Daktronics the opportunity to be your equipment provider. It is important to us that we capture your vision for this project. The provided quote outlines your product selection. Please look it over carefully and work with your salesperson to review and answer any questions.

We look forward to partnering with you on this exciting opportunity!

### **Placing Order:**

When you are ready to place your order, contact your salesperson to obtain order documents. Daktronics will need the following information:

- Finalized equipment decision, including colors
- Delivery location/address
- Bill to information – Invoice Remit

If you are incorporating school or sponsorship logos into your project, please view [Daktronics Graphics File Standards](#) and submit with your order documents.

### **Additional Information:**

Our website and blog offer helpful information. Learn more about what our customers are talking about by visiting the following:

- Could your PA system use an upgrade?
  - Check out our [Sports Sound Systems](#).
- Wishing you could check off more items on your list of needs?
  - See how [Daktronics Sports Marketing](#) could add revenue to your budget.
- Curious what other schools have installed?
  - Look through our [Daktronics Sports Photo Gallery](#) for ideas.
- Did you know we have an in-house reliability laboratory?
  - Experience the testing your components undergo in our [Product Reliability Lab](#).
- Interested in financing options for orders over \$25,000?
  - View our [Getting Started Guide](#) to see what Daktronics offers.
- Want to view helpful information related to our products, in addition to stories on how other schools are developing students and generating revenue?
  - Check out our [blog](#).

# DAKTRONICS QUOTE # 821512-1-1

Veterans Park  
 22400 Moneta Ave  
 Carson, CA USA 90745  
 Phone:  
 Fax:  
 Email:

11/Aug/2023  
 Quote Valid for: 60 days  
 Terms: Net 30 days from shipment with  
 Purchase Order  
 Subject to Credit Review  
 FCA: DESTINATION  
 Delivery: Call for Production Time

**Reference: Veterans Park - GT6x**

Item No.	Model	Description	Qty	Price
1	GT6x-135X405-8-RGB-SF	<b>Galaxy® Outdoor Electronic Message Center - GT6x Series - 8mm RGB</b> Matrix: 135 lines by 405 columns Line Spacing: 8mm LED Color: RGB- 281 Trillion Colors Face Configuration: SF - single one sided display View Angle: 140 degrees Horizontal x 70 degrees Vertical Cabinet Dimensions: 4' 2" H X 11' 1" W X 0' 7" D (Approx. Dimensions) Max Power: 2815 watts/display Weight: Unpackaged 410 lbs per display; Packaged 680 lbs per display	1	\$30,740.00
	Daktronics Verizon Modem, 4G, Ethernet	Daktronics Verizon 4G Cellular Modem Only - Requires Daktronics Verizon Cellular Data Plan	1	
	System Startup	Final Commissioning of Equipment	1	
2	<b>Taxes</b>	<b>10.25% - Subject to change at time of order based on current tax rate &amp; ship to location</b>	1	\$3,150.85
3	<b>FREIGHT</b>	<b>Shipping to Azusa, CA via LTL (enclosed trailer). Usually unloads at a dock. Forklift or pallet jack may be required.</b>	1	\$875.00
<b>Services</b>				
4	<b>G5C5-W</b>	<b>Five Year Warranty - Parts Coverage - G5G5</b>	1	
	Venus® Control Suite Basic 10-Year Subscription	Secure, web-based software that enables display management anytime, anywhere via internet connection.	1	
	Venus® Control Suite Training Onboarding	Venus® self guided training videos. (English only.)	1	
	Venus® Control Suite - One-on-One Webinar	Customized Venus® training in a live, web-based, conference call format using the customer's phone & computer. (English only.)	1	
	Daktronics Verizon Lifetime 4G Cellular Data Plan for VCS, Up to 100,000 Pixels	Daktronics Verizon Lifetime 4G Cellular Data Plan Per Modem, for Venus Control Suite on Displays Up to 100,000 pixels. Excludes streaming data feeds and diagnostics.	1	

<b>Total Price Including Applicable Tax:</b>	<b>\$34,765.85</b>
--	--------------------

Please reference listed sales literature: DD1569120 for On-site Labor, DD1628383 for G5C5-W, DD3512730 for Daktronics Verizon Modem, 4G, Ethernet, DD4008961 for GT6x-108X324-10-RGB-SF, DD4305463 for GT6x-135X405-8-RGB-SF

Please reference listed shop drawings: DWG-04569830 for GT6x-108X324-10-RGB-SF, DWG-04569830 for GT6x-135X405-8-RGB-SF



**Options**

*Please contact your sales representative for additional information*

**Service Options**

On-site Labor	One Year Extended Service for on-site labor coverage	1	\$1,264.00
---------------	--	---	------------

# DAKTRONICS QUOTE # 821512-1-1

## Alternate Equipment: 1

Item No.	Model	Description	Qty	Price
1	GT6x-108X324-10-RGB-SF	<b>Galaxy® Outdoor Electronic Message Center - GT6x Series - 10mm RGB</b> Matrix: 108 lines by 324 columns Line Spacing: 10mm LED Color: RGB- 281 Trillion Colors Face Configuration: SF - single one sided display View Angle: 140 degrees Horizontal x 70 degrees Vertical Cabinet Dimensions: 4' 2" H X 11' 1" W X 0' 7" D (Approx. Dimensions) Max Power: 2815 watts/display Weight: Unpackaged 410 lbs per display; Packaged 680 lbs per display	1	\$26,686.00
	Daktronics Verizon Modem, 4G, Ethernet	Daktronics Verizon 4G Cellular Modem Only - Requires Daktronics Verizon Cellular Data Plan	1	
	System Startup	Final Commissioning of Equipment	1	
2	Taxes	<b>10.25% - Subject to change at time of order based on current tax rate &amp; ship to location</b>	1	\$2,735.32
3	FREIGHT	<b>Shipping to Azusa, CA via LTL (enclosed trailer). Usually unloads at a dock. Forklift or pallet jack may be required.</b>	1	\$875.00
<b>Services</b>				
4	G5C5-W	<b>Five Year Warranty - Parts Coverage - G5G5</b>	1	
	Venus® Control Suite Basic 10-Year Subscription	Secure, web-based software that enables display management anytime, anywhere via internet connection.	1	
	Venus® Control Suite Training Onboarding	Venus® self guided training videos. (English only.)	1	
	Venus® Control Suite - One-on-One Webinar	Customized Venus® training in a live, web-based, conference call format using the customer's phone & computer. (English only.)	1	
	Daktronics Verizon Lifetime 4G Cellular Data Plan for VCS, Up to 100,000 Pixels	Daktronics Verizon Lifetime 4G Cellular Data Plan Per Modem, for Venus Control Suite on Displays Up to 100,000 pixels. Excludes streaming data feeds and diagnostics.	1	

<b>Total Price Including Applicable Tax:</b>	<b>\$30,296.32</b>
--	--------------------

Please reference listed sales literature: DD1569120 for On-site Labor, DD1628383 for G5C5-W, DD3512730 for Daktronics Verizon Modem, 4G, Ethernet, DD4008961 for GT6x-108X324-10-RGB-SF, DD4305463 for GT6x-135X405-8-RGB-SF

Please reference listed shop drawings: DWG-04569830 for GT6x-108X324-10-RGB-SF, DWG-04569830 for GT6x-135X405-8-RGB-SF

## Options

Please contact your sales representative for additional information

### Service Options

On-site Labor	One Year Extended Service for on-site labor coverage	1	\$1,084.00
---------------	--	---	------------

## Leasing Program

If your purchase exceeds \$25,000, you may qualify for our leasing program allowing you more flexibility to spread out the cost of your Daktronics display over of a period up to five (5) years. Benefits of our leasing program include fixed rate financing, non-appropriation clause, no prepayment penalty, and customizable payment schedules. Plus, at the end of the lease, the equipment is yours to keep with no additional balloon payments.

Sample payment options as follows:

\$50,000 in total equipment cost = \$11,285 per year

\$100,000 in total equipment cost = \$22,568 per year

\$250,000 in total equipment cost = \$56,420 per year

\*\*Payments based on 5 year/annual payment in advance structure. **Leasing is subject to credit approval and agreed upon documentation with Daktronics lending partner.** Contact your Daktronics representative for additional options and details.

### Exclusions:

- |   |   |
|---|---|
| - <b>Electrical Installation</b>                          | - <b>Physical/Mechanical Installation</b> |
| - <b>Structure</b>  | - <b>Foundation</b>                       |
| - <b>Power</b>  | - <b>Hoist</b>                            |
| - <b>Engineering Certification</b>                        | - <b>Signal Conduit</b>                   |
| - <b>Labor to Pull Signal Cable</b>                       | - <b>Applicable Permits</b>               |
| - <b>Electrical Switch Gear or Distribution Equipment</b> | - <b>Front End Equipment</b>              |

Unless expressly stated otherwise in this Quote # 821512-1 Rev 1 or the attachments, if Daktronics performs installation of the Equipment, the price quoted does not include the following services pertaining to physical installations: digging of footings (including dirt removal), any materials fabrication, installation of steel cages, rebar, or bolt attachments, or pouring and finishing of concrete footings. Those service may be provided for an additional cost beyond the quoted price. Purchaser shall be fully responsible for any and all additional costs plus overhead in the event anything unexpected of any nature whatsoever is found while digging the footings including but are not limited to rock, water, utility lines, pipes or any other unforeseen circumstance. The Purchaser acknowledges and agrees that it is fully responsible for all site conditions.

Prices and charges are subject to change by Daktronics at any time before the final agreement between the parties is effective. Ship Date will be determined after customer purchase order is received or agreement is signed or otherwise effective, shop drawings are approved (if required) and down payment is received (if required).

### Installation Responsibilities:

If applicable please reference Attachment A for Installation Responsibilities.

### Ad/ID Copy Approval Process

Customer shall provide digital artwork for advertising and identification panels, conforming to [Daktronics' graphic file standards](#), at the time of order.

Daktronics will create a proof of provided artwork and require approval of that proof three weeks prior to the initial anticipated ship date. Advertising and identification panels not approved in time, will be shipped without copy in Daktronics' standard finish.

---

Roberto Diaz  
PHONE: 714-313-6349  
FAX: 605-697-4700  
EMAIL: Roberto.Diaz@daktronics.com

---

Ashlin Wiebe  
PHONE: 605-692-0200  
FAX:  
EMAIL: Ashlin.Wiebe@daktronics.com

### Terms And Conditions:

The Terms and Conditions which apply to this order available on request.

SL-02374 Standard Warranty and Limitation of Seller's Liability ([www.daktronics.com/terms\\_conditions/SL-02374.pdf](http://www.daktronics.com/terms_conditions/SL-02374.pdf))

SL-02375 Standard Terms and Conditions of Sale ([www.daktronics.com/terms\\_conditions/SL-02375.pdf](http://www.daktronics.com/terms_conditions/SL-02375.pdf))

SL-07862 Software License Agreement ([www.daktronics.com/terms\\_conditions/SL-07862.pdf](http://www.daktronics.com/terms_conditions/SL-07862.pdf))

Additional Links:

Wireless Service Addendum ([www.daktronics.com/TermsConditions/DD3956286](http://www.daktronics.com/TermsConditions/DD3956286))

### NOTE:

The pricing may be adjusted for freight and taxes depending on the options selected.

Please request order documents to submit your order.

# DAKTRONICS QUOTE # 821512-1-1 MAIN ATTACHMENT A

## CUSTOMER RESPONSIBILITIES

### General

- 1) Secure necessary sign permits, as required.
- 2) Secure necessary construction permits, as required.
- 3) Removal and disposal of existing equipment, as applicable.
- 4) Removal and disposal of existing structure, as applicable.
- 5) Customer is responsible to ensure the existing structure/building is adequate, including any necessary modifications, for the installation of the Equipment, including but not limited to (i) obtaining certified engineer drawings to the extent required by law and (ii) providing Daktronics, upon reasonable request, documentation relating to the existing structure and modifications necessary for Daktronics to perform its work.
- 6) Mark location of the new Equipment as delineated in the quote.
- 7) Locate private underground utilities.
- 8) All landscaping restoration, as required.
- 9) Provide all landscaping, track, sidewalk and path protection along with site restoration, and/or sprinkler system repair work.

### Structures

- 1) Excavation of foundation(s) including spoils removal. Placement and finishing of concrete for foundations, as applicable.
- 2) Fabrication, erection and application of finish coatings for all structural components for the installation of the Equipment, as applicable.

### Electrical & Data

- 1) Provide electrical power to all Daktronics supplied load centers/termination panel at/within the Equipment, as applicable. Electrical power shall be installed per all applicable electrical codes and regulations and shall include; transformer, electrical disconnect, panel board with over current protection, J-boxes, receptacles, power drop cords as applicable per Equipment location and product specifications. Provide all required breakers based on the Equipment electrical loads.
- 2) Provide personnel for maintenance and operator training.

### Product/Equipment

- 1) Accept, lift, unload, and inspect all Equipment and control equipment from carrier.
- 2) Provide storage of all Equipment and control equipment in a safe, dry, and secure location until installation.
- 3) Lift and mount/install Equipment listed in this quotation according to the product specifications, including placing control equipment in the control room as applicable.

## DAKTRONICS RESPONSIBILITIES

### General

- 1) Not applicable

### Structures

- 1) Not applicable

### Electrical & Data

- 1) Terminate signal cable at control location and Equipment location for Equipment delineated in Daktronics quote
- 2) Unpack, set-up, hook-up, and testing of control system.
- 3) Perform maintenance training during installation.
- 4) Perform final systems testing and commissioning.

### Product/Equipment

- 1) Not applicable

## QUALIFICATIONS/CLARIFICATIONS

## DAKTRONICS QUOTE # 821512-1-1 MAIN ATTACHMENT A

- 1) **Access:** Daktronics requires unobstructed access to Equipment and control room installation site until display is 100%. Installation equipment (lifts, trucks, etc.) are expected to have access directly to the display structure location and control location.
- 2) **Control Room Climate:** Normal operating temperature should be between 40° to 90° Fahrenheit (4° to 32° Celsius). Normal operating humidity should be less than 80% non-condensing. Storage temperature should be between -10° to 105° Fahrenheit (-23° to 41° Celsius). Storage humidity should be less than 95% non-condensing. Keep computers and monitors out of direct sunlight during storage. Allow control equipment taken out of storage to return to operating temperature range prior to turning it on (24 hours recommended).
- 3) **Electrical:** The maximum voltage is 120 volts line to neutral for all Equipment in this quotation.
- 4) **Building Penetrations:** Customer to provide all required building (wall/roof/floor) penetrations for the installation of Daktronics equipment to include all attachment, electrical and low voltage/signal connections as applicable.



# DAKTRONICS QUOTE # 821512-1-1 ALT #1

## ATTACHMENT A

### CUSTOMER RESPONSIBILITIES

#### General

- 1) Secure necessary sign permits, as required.
- 2) Secure necessary construction permits, as required.
- 3) Removal and disposal of existing equipment, as applicable.
- 4) Removal and disposal of existing structure, as applicable.
- 5) Customer is responsible to ensure the existing structure/building is adequate, including any necessary modifications, for the installation of the Equipment, including but not limited to (i) obtaining certified engineer drawings to the extent required by law and (ii) providing Daktronics, upon reasonable request, documentation relating to the existing structure and modifications necessary for Daktronics to perform its work.
- 6) Mark location of the new Equipment as delineated in the quote.
- 7) Locate private underground utilities.
- 8) All landscaping restoration, as required.
- 9) Provide all landscaping, track, sidewalk and path protection along with site restoration, and/or sprinkler system repair work.

#### Structures

- 1) Excavation of foundation(s) including spoils removal. Placement and finishing of concrete for foundations, as applicable.
- 2) Fabrication, erection and application of finish coatings for all structural components for the installation of the Equipment, as applicable.

#### Electrical & Data

- 1) Provide electrical power to all Daktronics supplied load centers/termination panel at/within the Equipment, as applicable. Electrical power shall be installed per all applicable electrical codes and regulations and shall include; transformer, electrical disconnect, panel board with over current protection, J-boxes, receptacles, power drop cords as applicable per Equipment location and product specifications. Provide all required breakers based on the Equipment electrical loads.
- 2) Provide personnel for maintenance and operator training.

#### Product/Equipment

- 1) Accept, lift, unload, and inspect all Equipment and control equipment from carrier.
- 2) Provide storage of all Equipment and control equipment in a safe, dry, and secure location until installation.
- 3) Lift and mount/install Equipment listed in this quotation according to the product specifications, including placing control equipment in the control room as applicable.

### DAKTRONICS RESPONSIBILITIES

#### General

- 1) Not applicable

#### Structures

- 1) Not applicable

#### Electrical & Data

- 1) Terminate signal cable at control location and Equipment location for Equipment delineated in Daktronics quote
- 2) Unpack, set-up, hook-up, and testing of control system.
- 3) Perform maintenance training during installation.
- 4) Perform final systems testing and commissioning.

#### Product/Equipment

- 1) Not applicable

### QUALIFICATIONS/CLARIFICATIONS

## DAKTRONICS QUOTE # 821512-1-1 ALT #1 ATTACHMENT A

- 1) **Access:** Daktronics requires unobstructed access to Equipment and control room installation site until display is 100%. Installation equipment (lifts, trucks, etc.) are expected to have access directly to the display structure location and control location.
- 2) **Control Room Climate:** Normal operating temperature should be between 40° to 90° Fahrenheit (4° to 32° Celsius). Normal operating humidity should be less than 80% non-condensing. Storage temperature should be between -10° to 105° Fahrenheit (-23° to 41° Celsius). Storage humidity should be less than 95% non-condensing. Keep computers and monitors out of direct sunlight during storage. Allow control equipment taken out of storage to return to operating temperature range prior to turning it on (24 hours recommended).
- 3) **Electrical:** The maximum voltage is 120 volts line to neutral for all Equipment in this quotation.
- 4) **Building Penetrations:** Customer to provide all required building (wall/roof/floor) penetrations for the installation of Daktronics equipment to include all attachment, electrical and low voltage/signal connections as applicable.

# GALAXY® GT6x 8 MM PRODUCT SPECIFICATIONS

The Galaxy® GT6x offers high-value Galaxy features combined with high-resolution 8 mm surface mount LED technology to provide high-quality images.

## 8 MM TECHNICAL SPECIFICATIONS

**Character Height:**

2" (7 pixel font)

**Line Spacing:**

8.13 mm (0.3")

**Pixel Configuration:**

3-in-1 SMD

**Maximum Brightness:**

8,000 nits

**Full Color Capability:**

281 trillion colors

**Viewing Angle:**

160 degrees horizontal x 70 degrees vertical

**Min Viewing Distance:**

18' (8 mm)



## PRODUCT FEATURES

- All sealed components
- Quick connects
- Mounting clips
- High-contrast louvers
- Redundant module signal
- Large sections for fast installation
- Front ventilation on displays less than eight feet tall
- No spreader beam required for displays greater than eight feet tall
- Single-step module removal
- Shallow cabinet depth
- Narrow cabinet borders

## MODEL NUMBER GUIDE

GT6x	-	90	x	135	-	8	-	RGB	-	SF
Series		Lines High		Columns Wide		Line Spacing		LED Color		Single Face or Two View

## GT6x SERIES SPECIFICATIONS

**Estimated LED Lifetime:**

100,000+ hours

**Contrast Enhancement:**

Non-reflective black louvers and module face grooves disperse light

**Message Capability:**

Text, graphics, logos, basic animation, video clips, multiple font styles, and sizes

**Control Software:**

Venus® Control Suite

**Power:**

120, 120/240 VAC Single Phase

**Display Dimming:**

64 levels (Automatic, scheduled or manual control)

**Communication Options:**

Ethernet Fiber Optic, Ethernet Bridge Radio, Remote Cellular, Ethernet CAT5

**Operating Temperature:**

-40°F to 120°F with 99% RH non-condensing

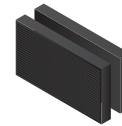
**Compliance Information:**

UL Listed, FCC compliance

## DISPLAY CONFIGURATIONS



**Single-face (SF)**  
Available in all sizes



**Two-view (2V)**  
Available in all sizes



# GALAXY® GT6x 8 MM PRODUCT SPECIFICATIONS

Lines x Columns	Sections/Ventilated	Cabinet Dimensions Feet-Inches H x W x D	Cabinet Dimensions Meters H x W x D	Cabinet Square Feet (Square Meters)	Active Area Square Feet (Square Meters)	Cabinet Weight Pounds (kilograms)	Lines/Characters per line	Character Height	Maximum Watts RGB
45x180	Sing/Ft	1'9" x 5'11" x 7"	0.53 x 1.54 x 0.18	8.6 (0.8)	5.8 (0.6)	65 (30)	5/36	2" - 14"	495
45x225	Sing/Ft	1'9" x 6'3" x 7"	0.53 x 1.91 x 0.18	10.7 (1.0)	7.2 (0.8)	80 (37)	5/45	2" - 14"	610
45x270	Sing/Ft	1'9" x 7'6" x 7"	0.53 x 2.28 x 0.18	12.7 (1.2)	8.7 (0.9)	95 (44)	5/54	2" - 14"	720
45x315	Sing/Ft	1'9" x 8'8" x 7"	0.53 x 2.64 x 0.18	14.8 (1.4)	10.1 (1.0)	110 (50)	5/63	2" - 14"	835
45x360	Sing/Ft	1'9" x 9'11" x 7"	0.53 x 3.01 x 0.18	16.8 (1.6)	11.6 (1.2)	125 (57)	5/72	2" - 14"	945
45x405	Sing/Ft	1'9" x 11'1" x 7"	0.53 x 3.37 x 0.18	18.8 (1.8)	13.0 (1.3)	140 (64)	5/81	2" - 14"	1060
45x450	Sing/Ft	1'9" x 12'3" x 7"	0.53 x 3.74 x 0.18	20.9 (1.9)	14.4 (1.5)	155 (71)	5/90	2" - 14"	1170
45x495	Sing/Ft	1'9" x 13'6" x 7"	0.53 x 4.1 x 0.18	22.9 (2.1)	15.9 (1.6)	170 (78)	5/99	2" - 14"	1285
45x540	Sing/Ft	1'9" x 14'8" x 7"	0.53 x 4.47 x 0.18	25.0 (2.3)	17.3 (1.8)	185 (84)	5/108	2" - 14"	1395
45x585	Sing/Ft	1'9" x 15'11" x 7"	0.53 x 4.84 x 0.18	27.0 (2.5)	18.8 (1.9)	200 (91)	5/117	2" - 14"	1510
45x630	Sing/Ft	1'9" x 17'1" x 7"	0.53 x 5.2 x 0.18	29.0 (2.7)	20.2 (2.1)	215 (98)	5/126	2" - 14"	1620
45x675	Sing/Ft	1'9" x 18'3" x 7"	0.53 x 5.57 x 0.18	31.1 (2.9)	21.6 (2.2)	230 (105)	5/135	2" - 14"	1735
45x720	Sing/Ft	1'9" x 19'6" x 7"	0.53 x 5.93 x 0.18	33.1 (3.1)	23.1 (2.4)	245 (112)	5/144	2" - 14"	1850
45x765	Sing/Ft	1'9" x 20'8" x 7"	0.53 x 6.3 x 0.18	35.2 (3.3)	24.5 (2.5)	260 (118)	5/153	2" - 14"	1960
45x810	Sing/Ft	1'9" x 21'11" x 7"	0.53 x 6.66 x 0.18	37.2 (3.5)	26.0 (2.6)	275 (125)	5/162	2" - 14"	2075
45x855	Sing/Ft	1'9" x 23'1" x 7"	0.53 x 7.03 x 0.18	39.2 (3.7)	27.4 (2.8)	290 (132)	5/171	2" - 14"	2185
45x900	Sing/Ft	1'9" x 24'3" x 7"	0.53 x 7.4 x 0.18	41.3 (3.8)	28.8 (3.0)	305 (139)	5/180	2" - 14"	2300
90x135	Sing/Ft	2'11" x 3'11" x 7"	0.89 x 1.18 x 0.18	11.2 (1.1)	8.7 (0.9)	90 (41)	11/27	2" - 28"	630
90x180	Sing/Ft	2'11" x 5'1" x 7"	0.89 x 1.54 x 0.18	14.6 (1.4)	11.6 (1.2)	125 (57)	11/36	2" - 28"	825
90x225	Sing/Ft	2'11" x 6'3" x 7"	0.89 x 1.91 x 0.18	18.1 (1.7)	14.4 (1.5)	155 (71)	11/45	2" - 28"	1020
90x270	Sing/Ft	2'11" x 7'6" x 7"	0.89 x 2.28 x 0.18	21.6 (2.0)	17.3 (1.8)	185 (84)	11/54	2" - 28"	1215
90x315	Sing/Ft	2'11" x 8'8" x 7"	0.89 x 2.64 x 0.18	25.1 (2.3)	20.2 (2.1)	215 (98)	11/63	2" - 28"	1410
90x360	Sing/Ft	2'11" x 9'11" x 7"	0.89 x 3.01 x 0.18	28.6 (2.7)	23.1 (2.4)	245 (112)	11/72	2" - 28"	1610
90x405	Sing/Ft	2'11" x 11'1" x 7"	0.89 x 3.37 x 0.18	32.0 (3.0)	26.0 (2.6)	275 (125)	11/81	2" - 28"	1805
90x450	Sing/Ft	2'11" x 12'3" x 7"	0.89 x 3.74 x 0.18	35.5 (3.3)	28.8 (3.0)	305 (139)	11/90	2" - 28"	2000
90x495	Sing/Ft	2'11" x 13'6" x 7"	0.89 x 4.1 x 0.18	39.0 (3.6)	31.7 (3.3)	335 (152)	11/99	2" - 28"	2195
90x540	Sing/Ft	2'11" x 14'8" x 7"	0.89 x 4.47 x 0.18	42.5 (4.0)	34.6 (3.5)	365 (166)	11/108	2" - 28"	2390
90x585	Sing/Ft	2'11" x 15'11" x 7"	0.89 x 4.84 x 0.18	46.0 (4.3)	37.5 (3.8)	395 (180)	11/117	2" - 28"	2585
90x630	Sing/Ft	2'11" x 17'1" x 7"	0.89 x 5.2 x 0.18	49.4 (4.6)	40.4 (4.2)	425 (193)	11/126	2" - 28"	2780
90x675	Sing/Ft	2'11" x 18'3" x 7"	0.89 x 5.57 x 0.18	52.9 (5.0)	43.2 (4.4)	455 (207)	11/135	2" - 28"	2975
90x720	Sing/Ft	2'11" x 19'6" x 7"	0.89 x 5.93 x 0.18	56.4 (5.3)	46.1 (4.7)	485 (220)	11/144	2" - 28"	3170
90x765	Sing/Ft	2'11" x 20'8" x 7"	0.89 x 6.3 x 0.18	59.9 (5.6)	49.0 (5.0)	515 (234)	11/153	2" - 28"	3365
90x810	Sing/Ft	2'11" x 21'11" x 7"	0.89 x 6.66 x 0.18	63.4 (5.9)	51.9 (5.3)	545 (248)	11/162	2" - 28"	3560
90x855	Sing/Ft	2'11" x 23'1" x 7"	0.89 x 7.03 x 0.18	66.8 (6.3)	54.8 (5.6)	575 (261)	11/171	2" - 28"	3755
90x900	Sing/Ft	2'11" x 24'3" x 7"	0.89 x 7.4 x 0.18	70.3 (6.6)	57.6 (5.9)	605 (275)	11/180	2" - 28"	3950
135x90	Sing/Ft	4'2" x 2'8" x 7"	1.25 x 0.81 x 0.18	10.9 (1.0)	8.7 (0.9)	95 (44)	16/18	2" - 43"	630
135x135	Sing/Ft	4'2" x 3'11" x 7"	1.25 x 1.18 x 0.18	15.8 (1.5)	13.0 (1.2)	140 (64)	16/27	2" - 43"	970
135x180	Sing/Ft	4'2" x 5'1" x 7"	1.25 x 1.54 x 0.18	20.7 (1.9)	17.3 (1.7)	185 (84)	16/36	2" - 43"	1275
135x225	Sing/Ft	4'2" x 6'3" x 7"	1.25 x 1.91 x 0.18	25.6 (2.4)	21.6 (2.1)	230 (105)	16/45	2" - 43"	1585
135x270	Sing/Ft	4'2" x 7'6" x 7"	1.25 x 2.28 x 0.18	30.5 (2.9)	26.0 (2.4)	275 (125)	16/54	2" - 43"	1895
135x315	Sing/Ft	4'2" x 8'8" x 7"	1.25 x 2.64 x 0.18	35.5 (3.3)	30.3 (2.9)	320 (146)	16/63	2" - 43"	2200
135x360	Sing/Ft	4'2" x 9'11" x 7"	1.25 x 3.01 x 0.18	40.4 (3.8)	34.6 (3.3)	365 (166)	16/72	2" - 43"	2510
135x405	Sing/Ft	4'2" x 11'1" x 7"	1.25 x 3.37 x 0.18	45.3 (4.2)	38.9 (3.6)	410 (186)	16/81	2" - 43"	2815
135x450	Sing/Ft	4'2" x 12'3" x 7"	1.25 x 3.74 x 0.18	50.2 (4.7)	43.2 (4.1)	455 (207)	16/90	2" - 43"	3125
135x495	Sing/Ft	4'2" x 13'6" x 7"	1.25 x 4.1 x 0.18	55.1 (5.1)	47.6 (4.5)	500 (227)	16/99	2" - 43"	3430
135x540	Sing/Ft	4'2" x 14'8" x 7"	1.25 x 4.47 x 0.18	60.1 (5.6)	51.9 (4.8)	545 (248)	16/108	2" - 43"	3740
135x585	Sing/Ft	4'2" x 15'11" x 7"	1.25 x 4.84 x 0.18	65.0 (6.1)	56.2 (5.3)	590 (268)	16/117	2" - 43"	4050
135x630	Sing/Ft	4'2" x 17'1" x 7"	1.25 x 5.2 x 0.18	69.9 (6.5)	60.5 (5.7)	635 (289)	16/126	2" - 43"	4355
135x675	Sing/Ft	4'2" x 18'3" x 7"	1.25 x 5.57 x 0.18	74.8 (7.0)	64.8 (6.1)	680 (309)	16/135	2" - 43"	4665
135x720	Sing/Ft	4'2" x 19'6" x 7"	1.25 x 5.93 x 0.18	79.7 (7.4)	69.2 (6.5)	725 (329)	16/144	2" - 43"	4970
135x765	Sing/Ft	4'2" x 20'8" x 7"	1.25 x 6.3 x 0.18	84.7 (7.9)	73.5 (6.9)	770 (350)	16/153	2" - 43"	5280
135x810	Sing/Ft	4'2" x 21'11" x 7"	1.25 x 6.66 x 0.18	89.6 (8.3)	77.8 (7.3)	815 (370)	16/162	2" - 43"	5585
135x855	Sing/Ft	4'2" x 23'1" x 7"	1.25 x 7.03 x 0.18	94.5 (8.8)	82.1 (7.7)	860 (391)	16/171	2" - 43"	5895
135x900	Sing/Ft	4'2" x 24'3" x 7"	1.25 x 7.4 x 0.18	99.4 (9.3)	86.4 (8.1)	905 (411)	16/180	2" - 43"	6200
180x90	Sing/Ft	5'4" x 2'8" x 7"	1.62 x 0.81 x 0.18	14.1 (1.3)	11.6 (1.2)	125 (57)	22/18	2" - 57"	825
180x135	Sing/Ft	5'4" x 3'11" x 7"	1.62 x 1.18 x 0.18	20.4 (1.9)	17.3 (1.7)	185 (84)	22/27	2" - 57"	1215
180x180	Sing/Ft	5'4" x 5'1" x 7"	1.62 x 1.54 x 0.18	26.8 (2.5)	23.1 (2.3)	245 (112)	22/36	2" - 57"	1610



# GALAXY® GT6x 8 MM PRODUCT SPECIFICATIONS

Lines x Columns	Sections/Ventilated	Cabinet Dimensions Feet-Inches H x W x D	Cabinet Dimensions Meters H x W x D	Cabinet Square Feet (Square Meters)	Active Area Square Feet (Square Meters)	Cabinet Weight Pounds (kilograms)	Lines/Characters per line	Character Height	Maximum Watts RGB
180x225	Sing/Ft	5'4" x 6'3" x 7"	1.62 x 1.91 x 0.18	33.1 (3.1)	28.8 (2.9)	305 (139)	22/45	2" - 57"	2000
180x270	Sing/Ft	5'4" x 7'6" x 7"	1.62 x 2.28 x 0.18	39.5 (3.7)	34.6 (3.3)	365 (166)	22/54	2" - 57"	2390
180x315	Sing/Ft	5'4" x 8'8" x 7"	1.62 x 2.64 x 0.18	45.8 (4.3)	40.4 (3.9)	425 (193)	22/63	2" - 57"	2780
180x360	Sing/Ft	5'4" x 9'11" x 7"	1.62 x 3.01 x 0.18	52.2 (4.9)	46.1 (4.5)	485 (220)	22/72	2" - 57"	3170
180x405	Sing/Ft	5'4" x 11'1" x 7"	1.62 x 3.37 x 0.18	58.6 (5.5)	51.9 (5.0)	545 (248)	22/81	2" - 57"	3560
180x450	Sing/Ft	5'4" x 12'3" x 7"	1.62 x 3.74 x 0.18	64.9 (6.1)	57.6 (5.6)	605 (275)	22/90	2" - 57"	3950
180x495	Sing/Ft	5'4" x 13'6" x 7"	1.62 x 4.1 x 0.18	71.3 (6.6)	63.4 (6.2)	665 (302)	22/99	2" - 57"	4340
180x540	Sing/Ft	5'4" x 14'8" x 7"	1.62 x 4.47 x 0.18	77.6 (7.2)	69.2 (6.6)	725 (329)	22/108	2" - 57"	4730
180x585	Sing/Ft	5'4" x 15'11" x 7"	1.62 x 4.84 x 0.18	84.0 (7.8)	74.9 (7.2)	785 (357)	22/117	2" - 57"	5120
180x630	Sing/Ft	5'4" x 17'1" x 7"	1.62 x 5.2 x 0.18	90.4 (8.4)	80.7 (7.8)	845 (384)	22/126	2" - 57"	5510
180x675	Sing/Ft	5'4" x 18'3" x 7"	1.62 x 5.57 x 0.18	96.7 (9.0)	86.4 (8.3)	905 (411)	22/135	2" - 57"	5900
180x720	Sing/Ft	5'4" x 19'6" x 7"	1.62 x 5.93 x 0.18	103.1 (9.6)	92.2 (8.9)	965 (438)	22/144	2" - 57"	6295
180x765	Sing/Ft	5'4" x 20'8" x 7"	1.62 x 6.3 x 0.18	109.4 (10.2)	98.0 (9.5)	1030 (468)	22/153	2" - 57"	6685
180x810	Sing/Ft	5'4" x 21'11" x 7"	1.62 x 6.66 x 0.18	115.8 (10.8)	103.7 (9.9)	1090 (495)	22/162	2" - 57"	7075
180x855	Sing/Ft	5'4" x 23'1" x 7"	1.62 x 7.03 x 0.18	122.2 (11.4)	109.5 (10.5)	1150 (522)	22/171	2" - 57"	7465
180x900	Sing/Ft	5'4" x 24'3" x 7"	1.62 x 7.4 x 0.18	128.5 (12.0)	115.2 (11.1)	1210 (549)	22/180	2" - 57"	7855
225x90	Sing/Ft	6'6" x 2'8" x 7"	1.99 x 0.81 x 0.18	17.3 (1.6)	14.4 (1.5)	155 (71)	28/18	2" - 71"	1020
225x135	Sing/Ft	6'6" x 3'11" x 7"	1.99 x 1.18 x 0.18	25.0 (2.3)	21.6 (2.1)	230 (105)	28/27	2" - 72"	1465
225x180	Sing/Ft	6'6" x 5'1" x 7"	1.99 x 1.54 x 0.18	32.8 (3.1)	28.8 (2.9)	305 (139)	28/36	2" - 72"	1940
225x225	Sing/Ft	6'6" x 6'3" x 7"	1.99 x 1.91 x 0.18	40.6 (3.8)	36.0 (3.6)	380 (173)	28/45	2" - 72"	2410
225x270	Sing/Ft	6'6" x 7'6" x 7"	1.99 x 2.28 x 0.18	48.4 (4.5)	43.2 (4.2)	455 (207)	28/54	2" - 72"	2885
225x315	Sing/Ft	6'6" x 8'8" x 7"	1.99 x 2.64 x 0.18	56.2 (5.3)	50.4 (4.9)	530 (241)	28/63	2" - 72"	3355
225x360	Sing/Ft	6'6" x 9'11" x 7"	1.99 x 3.01 x 0.18	64.0 (6.0)	57.6 (5.7)	605 (275)	28/72	2" - 72"	3830
225x405	Sing/Ft	6'6" x 11'1" x 7"	1.99 x 3.37 x 0.18	71.8 (6.7)	64.8 (6.3)	680 (309)	28/81	2" - 72"	4305
225x450	Sing/Ft	6'6" x 12'3" x 7"	1.99 x 3.74 x 0.18	79.6 (7.4)	72.0 (7.0)	755 (343)	28/90	2" - 72"	4775
225x495	Sing/Ft	6'6" x 13'6" x 7"	1.99 x 4.1 x 0.18	87.4 (8.2)	79.2 (7.8)	830 (377)	28/99	2" - 72"	5250
225x540	Sing/Ft	6'6" x 14'8" x 7"	1.99 x 4.47 x 0.18	95.2 (8.9)	86.4 (8.4)	905 (411)	28/108	2" - 72"	5720
225x585	Sing/Ft	6'6" x 15'11" x 7"	1.99 x 4.84 x 0.18	103.0 (9.6)	93.6 (9.1)	980 (445)	28/117	2" - 72"	6195
225x630	Sing/Ft	6'6" x 17'1" x 7"	1.99 x 5.2 x 0.18	110.8 (10.3)	100.8 (9.9)	1060 (481)	28/126	2" - 72"	6670
225x675	Sing/Ft	6'6" x 18'3" x 7"	1.99 x 5.57 x 0.18	118.6 (11.1)	108.0 (10.5)	1135 (515)	28/135	2" - 72"	7140
225x720	Sing/Ft	6'6" x 19'6" x 7"	1.99 x 5.93 x 0.18	126.4 (11.8)	115.2 (11.2)	1210 (549)	28/144	2" - 72"	7615
225x765	Sing/Ft	6'6" x 20'8" x 7"	1.99 x 6.3 x 0.18	134.2 (12.5)	122.4 (12.0)	1285 (583)	28/153	2" - 72"	8090
225x810	Sing/Ft	6'6" x 21'11" x 7"	1.99 x 6.66 x 0.18	142.0 (13.3)	129.6 (12.5)	1360 (617)	28/162	2" - 72"	8560
225x855	Sing/Ft	6'6" x 23'1" x 7"	1.99 x 7.03 x 0.18	149.8 (14.0)	136.8 (13.3)	1435 (651)	28/171	2" - 72"	9035
225x900	Sing/Ft	6'6" x 24'3" x 7"	1.99 x 7.4 x 0.18	157.6 (14.7)	144.0 (14.1)	1510 (685)	28/180	2" - 72"	9505
270x90	Sing/Ft	7'9" x 2'8" x 7"	2.35 x 0.81 x 0.18	20.5 (1.9)	17.3 (1.8)	185 (84)	33/18	2" - 86"	1215
270x135	Sing/Ft	7'9" x 3'11" x 7"	2.35 x 1.18 x 0.18	29.6 (2.8)	26.0 (2.4)	275 (125)	33/27	2" - 86"	1715
270x180	Sing/Ft	7'9" x 5'1" x 7"	2.35 x 1.54 x 0.18	38.9 (3.6)	34.6 (3.3)	365 (166)	33/36	2" - 86"	2270
270x225	Sing/Ft	7'9" x 6'3" x 7"	2.35 x 1.91 x 0.18	48.1 (4.5)	43.2 (4.2)	455 (207)	33/45	2" - 86"	2825
270x270	Sing/Ft	7'9" x 7'6" x 7"	2.35 x 2.28 x 0.18	57.4 (5.4)	51.9 (4.8)	545 (248)	33/54	2" - 86"	3380
270x315	Sing/Ft	7'9" x 8'8" x 7"	2.35 x 2.64 x 0.18	66.6 (6.2)	60.5 (5.7)	635 (289)	33/63	2" - 86"	3935
270x360	Sing/Ft	7'9" x 9'11" x 7"	2.35 x 3.01 x 0.18	75.8 (7.1)	69.2 (6.6)	725 (329)	33/72	2" - 86"	4490
270x405	Sing/Ft	7'9" x 11'1" x 7"	2.35 x 3.37 x 0.18	85.1 (7.9)	77.8 (7.3)	815 (370)	33/81	2" - 86"	5045
270x450	Sing/Ft	7'9" x 12'3" x 7"	2.35 x 3.74 x 0.18	94.3 (8.8)	86.4 (8.1)	905 (411)	33/90	2" - 86"	5600
270x495	Sing/Ft	7'9" x 13'6" x 7"	2.35 x 4.1 x 0.18	103.6 (9.6)	95.1 (9.0)	995 (452)	33/99	2" - 86"	6160
270x540	Sing/Ft	7'9" x 14'8" x 7"	2.35 x 4.47 x 0.18	112.8 (10.5)	103.7 (9.7)	1090 (495)	33/108	2" - 86"	6715
270x585	Sing/Ft	7'9" x 15'11" x 7"	2.35 x 4.84 x 0.18	122.0 (11.4)	112.4 (10.6)	1180 (536)	33/117	2" - 86"	7270
270x630	Sing/Ft	7'9" x 17'1" x 7"	2.35 x 5.2 x 0.18	131.3 (12.2)	121.0 (11.4)	1270 (577)	33/126	2" - 86"	7825
270x675	Sing/Ft	7'9" x 18'3" x 7"	2.35 x 5.57 x 0.18	140.5 (13.1)	129.6 (12.1)	1360 (617)	33/135	2" - 86"	8380
270x720	Sing/Ft	7'9" x 19'6" x 7"	2.35 x 5.93 x 0.18	149.8 (13.9)	138.3 (13.0)	1450 (658)	33/144	2" - 86"	8935
270x765	Sing/Ft	7'9" x 20'8" x 7"	2.35 x 6.3 x 0.18	159.0 (14.8)	146.9 (13.9)	1540 (699)	33/153	2" - 86"	9490
270x810	Sing/Ft	7'9" x 21'11" x 7"	2.35 x 6.66 x 0.18	168.2 (15.7)	155.6 (14.5)	1630 (740)	33/162	2" - 86"	10050
270x855	Sing/Ft	7'9" x 23'1" x 7"	2.35 x 7.03 x 0.18	177.5 (16.5)	164.2 (15.4)	1720 (781)	33/171	2" - 86"	10605
270x900	Sing/Ft	7'9" x 24'3" x 7"	2.35 x 7.4 x 0.18	186.7 (17.4)	172.8 (16.3)	1810 (822)	33/180	2" - 86"	11160
315x180	Sing/Bk	8'11" x 5'4" x 11"	2.72 x 1.62 x 0.28	47.2 (4.4)	40.4 (3.9)	690 (313)	39/36	2" - 100"	2480
315x225	Sing/Bk	8'11" x 6'6" x 11"	2.72 x 1.99 x 0.28	57.9 (5.4)	50.4 (4.9)	780 (354)	39/45	2" - 100"	3055
315x270	Sing/Bk	8'11" x 7'9" x 11"	2.72 x 2.35 x 0.28	68.6 (6.4)	60.5 (5.7)	870 (395)	39/54	2" - 100"	3635



# GALAXY® GT6x 8 MM PRODUCT SPECIFICATIONS

Lines x Columns	Sections/Ventilated	Cabinet Dimensions Feet-Inches H x W x D	Cabinet Dimensions Meters H x W x D	Cabinet Square Feet (Square Meters)	Active Area Square Feet (Square Meters)	Cabinet Weight Pounds (kilograms)	Lines/Characters per line	Character Height	Maximum Watts RGB
315x315	Sing/Bk	8'11" x 8'11" x 11"	2.72 x 2.72 x 0.28	79.3 (7.4)	70.6 (6.8)	985 (447)	39/63	2" - 100"	4275
315x360	Sing/Bk	8'11" x 10'2" x 11"	2.72 x 3.08 x 0.28	89.9 (8.4)	80.7 (7.8)	1075 (488)	39/72	2" - 100"	4850
315x405	Sing/Bk	8'11" x 11'4" x 11"	2.72 x 3.45 x 0.28	100.6 (9.4)	90.8 (8.6)	1165 (529)	39/81	2" - 100"	5430
315x450	Sing/Bk	8'11" x 12'6" x 11"	2.72 x 3.81 x 0.28	111.3 (10.4)	100.8 (9.6)	1285 (583)	39/90	2" - 100"	6070
315x495	Sing/Bk	8'11" x 13'9" x 11"	2.72 x 4.18 x 0.28	122 (11.4)	110.9 (10.7)	1375 (624)	39/99	2" - 100"	7185
315x540	Sing/Bk	8'11" x 14'11" x 11"	2.72 x 4.55 x 0.28	132.7 (12.4)	121 (11.4)	1460 (663)	39/108	2" - 100"	7765
315x585	Sing/Bk	8'11" x 16'2" x 11"	2.72 x 4.91 x 0.28	143.3 (13.4)	131.1 (12.5)	1580 (717)	39/117	2" - 100"	8405
315x630	Sing/Bk	8'11" x 17'4" x 11"	2.72 x 5.28 x 0.28	154 (14.4)	141.2 (13.5)	1670 (758)	39/126	2" - 100"	8980
315x675	Sing/Bk	8'11" x 18'6" x 11"	2.72 x 5.64 x 0.28	164.7 (15.3)	151.2 (14.3)	1760 (799)	39/135	2" - 100"	9560
315x720	Sing/Bk	8'11" x 19'9" x 11"	2.72 x 6.01 x 0.28	175.4 (16.3)	161.3 (15.3)	1875 (851)	39/144	2" - 100"	10200
315x765	Sing/Bk	8'11" x 20'11" x 11"	2.72 x 6.38 x 0.28	186.1 (17.4)	171.4 (16.4)	1965 (892)	39/153	2" - 100"	10775
315x810	Sing/Bk	8'11" x 22'2" x 11"	2.72 x 6.74 x 0.28	196.7 (18.3)	181.5 (17.2)	2055 (933)	39/162	2" - 100"	11355
315x855	Sing/Bk	8'11" x 23'4" x 11"	2.72 x 7.11 x 0.28	207.4 (19.3)	191.6 (18.2)	2275 (1032)	39/171	2" - 100"	11995
315x900	Sing/Bk	8'11" x 24'6" x 11"	2.72 x 7.47 x 0.28	218.1 (20.3)	201.6 (19.2)	2360 (1071)	39/180	2" - 100"	12570
315x945	Sing/Bk	8'11" x 25'9" x 11"	2.72 x 7.84 x 0.28	228.8 (21.3)	211.7 (20.0)	2450 (1112)	39/189	2" - 100"	13150
315x990	Sing/Bk	8'11" x 26'11" x 11"	2.72 x 8.2 x 0.28	239.5 (22.3)	221.8 (21.1)	2570 (1166)	39/198	2" - 100"	13790
315x1035	Sing/Bk	8'11" x 28'2" x 11"	2.72 x 8.57 x 0.28	250.1 (23.3)	231.9 (22.1)	2660 (1207)	39/207	2" - 100"	14365
315x1080	Sing/Bk	8'11" x 29'4" x 11"	2.72 x 8.94 x 0.28	260.8 (24.3)	242 (22.9)	2745 (1246)	39/216	2" - 100"	14945
315x1125	Sing/Bk	8'11" x 30'6" x 11"	2.72 x 9.3 x 0.28	271.5 (25.3)	252 (23.9)	2865 (1300)	39/225	2" - 100"	15580
315x1170	Sing/Bk	8'11" x 31'9" x 11"	2.72 x 9.67 x 0.28	282.2 (26.3)	262.1 (25.0)	2955 (1341)	39/234	2" - 100"	16160
315x1215	Sing/Bk	8'11" x 32'11" x 11"	2.72 x 10.03 x 0.28	292.9 (27.3)	272.2 (25.7)	3045 (1382)	39/243	2" - 100"	16740
315x1260	Sing/Bk	8'11" x 34'2" x 11"	2.72 x 10.4 x 0.28	303.5 (28.3)	282.3 (26.8)	3160 (1434)	39/252	2" - 100"	17375
315x1305	Sing/Bk	8'11" x 35'4" x 11"	2.72 x 10.76 x 0.28	314.2 (29.3)	292.4 (27.8)	3250 (1475)	39/261	2" - 100"	17955
315x1350	Sing/Bk	8'11" x 36'6" x 11"	2.72 x 11.13 x 0.28	324.9 (30.3)	302.4 (28.6)	3340 (1515)	39/270	2" - 100"	18535
315x1395	Sing/Bk	8'11" x 37'9" x 11"	2.72 x 11.5 x 0.28	335.6 (31.3)	312.5 (29.6)	3455 (1568)	39/279	2" - 100"	19170
360x180	Sing/Bk	10'2" x 5'4" x 11"	3.08 x 1.62 x 0.28	53.6 (5.0)	46.1 (4.5)	745 (338)	45/36	2" - 115"	2810
360x225	Sing/Bk	10'2" x 6'6" x 11"	3.08 x 1.99 x 0.28	65.7 (6.1)	57.6 (5.7)	840 (382)	45/45	2" - 115"	3470
360x270	Sing/Bk	10'2" x 7'9" x 11"	3.08 x 2.35 x 0.28	77.8 (7.2)	69.2 (6.6)	935 (425)	45/54	2" - 115"	4130
360x315	Sing/Bk	10'2" x 8'11" x 11"	3.08 x 2.72 x 0.28	89.9 (8.4)	80.7 (7.8)	1065 (484)	45/63	2" - 115"	4850
360x360	Sing/Bk	10'2" x 10'2" x 11"	3.08 x 3.08 x 0.28	102.1 (9.5)	92.2 (9.0)	1160 (527)	45/72	2" - 115"	5515
360x405	Sing/Bk	10'2" x 11'4" x 11"	3.08 x 3.45 x 0.28	114.2 (10.6)	103.7 (9.9)	1260 (572)	45/81	2" - 115"	6175
360x450	Sing/Bk	10'2" x 12'6" x 11"	3.08 x 3.81 x 0.28	126.3 (11.7)	115.2 (11.1)	1385 (629)	45/90	2" - 115"	7435
360x495	Sing/Bk	10'2" x 13'9" x 11"	3.08 x 4.18 x 0.28	138.4 (12.9)	126.8 (12.3)	1485 (674)	45/99	2" - 115"	8095
360x540	Sing/Bk	10'2" x 14'11" x 11"	3.08 x 4.55 x 0.28	150.5 (14.0)	138.3 (13.2)	1580 (717)	45/108	2" - 115"	8755
360x585	Sing/Bk	10'2" x 16'2" x 11"	3.08 x 4.91 x 0.28	162.7 (15.1)	149.8 (14.4)	1710 (776)	45/117	2" - 115"	9475
360x630	Sing/Bk	10'2" x 17'4" x 11"	3.08 x 5.28 x 0.28	174.8 (16.3)	161.3 (15.6)	1805 (819)	45/126	2" - 115"	10140
360x675	Sing/Bk	10'2" x 18'6" x 11"	3.08 x 5.64 x 0.28	186.9 (17.4)	172.8 (16.5)	1900 (862)	45/135	2" - 115"	10800
360x720	Sing/Bk	10'2" x 19'9" x 11"	3.08 x 6.01 x 0.28	199 (18.5)	184.4 (17.7)	2030 (921)	45/144	2" - 115"	11520
360x765	Sing/Bk	10'2" x 20'11" x 11"	3.08 x 6.38 x 0.28	211.1 (19.7)	195.9 (18.9)	2240 (1017)	45/153	2" - 115"	12180
360x810	Sing/Bk	10'2" x 22'2" x 11"	3.08 x 6.74 x 0.28	223.3 (20.8)	207.4 (19.8)	2335 (1060)	45/162	2" - 115"	12840
360x855	Sing/Bk	10'2" x 23'4" x 11"	3.08 x 7.11 x 0.28	235.4 (21.9)	218.9 (21.0)	2465 (1119)	45/171	2" - 115"	13560
360x900	Sing/Bk	10'2" x 24'6" x 11"	3.08 x 7.47 x 0.28	247.5 (23.0)	230.4 (22.2)	2560 (1162)	45/180	2" - 115"	14225
360x945	Sing/Bk	10'2" x 25'9" x 11"	3.08 x 7.84 x 0.28	259.6 (24.1)	242 (23.1)	2655 (1205)	45/189	2" - 115"	14885
360x990	Sing/Bk	10'2" x 26'11" x 11"	3.08 x 8.2 x 0.28	271.7 (25.3)	253.5 (24.3)	2785 (1264)	45/198	2" - 115"	15605
360x1035	Sing/Bk	10'2" x 28'2" x 11"	3.08 x 8.57 x 0.28	283.9 (26.4)	265 (25.5)	2880 (1307)	45/207	2" - 115"	16265
360x1080	Sing/Bk	10'2" x 29'4" x 11"	3.08 x 8.94 x 0.28	296 (27.5)	276.5 (26.4)	2980 (1352)	45/216	2" - 115"	16925
360x1125	Sing/Bk	10'2" x 30'6" x 11"	3.08 x 9.3 x 0.28	308.1 (28.6)	288 (27.6)	3105 (1409)	45/225	2" - 115"	17650
360x1170	Sing/Bk	10'2" x 31'9" x 11"	3.08 x 9.67 x 0.28	320.2 (29.8)	299.6 (28.8)	3205 (1454)	45/234	2" - 115"	18310
360x1215	Sing/Bk	10'2" x 32'11" x 11"	3.08 x 10.03 x 0.28	332.3 (30.9)	311.1 (29.7)	3300 (1497)	45/243	2" - 115"	18970
360x1260	Sing/Bk	10'2" x 34'2" x 11"	3.08 x 10.4 x 0.28	344.5 (32.0)	322.6 (30.9)	3430 (1556)	45/252	2" - 115"	19690
360x1305	Sing/Bk	10'2" x 35'4" x 11"	3.08 x 10.76 x 0.28	356.6 (33.1)	334.1 (32.1)	3525 (1599)	45/261	2" - 115"	20350
360x1350	Sing/Bk	10'2" x 36'6" x 11"	3.08 x 11.13 x 0.28	368.7 (34.3)	345.6 (33.0)	3620 (1643)	45/270	2" - 115"	21010
360x1395	Sing/Bk	10'2" x 37'9" x 11"	3.08 x 11.5 x 0.28	380.8 (35.4)	357.2 (34.2)	3750 (1701)	45/279	2" - 115"	21735
405x180	Multi/Bk	11'4" x 5'4" x 11"	3.45 x 1.62 x 0.28	59.9 (5.6)	51.9 (5.0)	960 (436)	50/36	2" - 129"	3260
405x225	Multi/Bk	11'4" x 6'6" x 11"	3.45 x 1.99 x 0.28	73.5 (6.9)	64.8 (6.3)	1080 (490)	50/45	2" - 129"	4005
405x270	Multi/Bk	11'4" x 7'9" x 11"	3.45 x 2.35 x 0.28	87.1 (8.1)	77.8 (7.3)	1195 (543)	50/54	2" - 129"	4745
405x315	Multi/Bk	11'4" x 8'11" x 11"	3.45 x 2.72 x 0.28	100.6 (9.4)	90.8 (8.6)	1360 (617)	50/63	2" - 129"	5610



# GALAXY® GT6x 8 MM PRODUCT SPECIFICATIONS

Lines x Columns	Sections/Ventilated	Cabinet Dimensions Feet-Inches H x W x D	Cabinet Dimensions Meters H x W x D	Cabinet Square Feet (Square Meters)	Active Area Square Feet (Square Meters)	Cabinet Weight Pounds (kilograms)	Lines/Characters per line	Character Height	Maximum Watts RGB
405x360	Multi/Bk	11'4" x 10'2" x 11"	3.45 x 3.08 x 0.28	114.2 (10.6)	103.7 (9.9)	1480 (672)	50/72	2" - 129"	6355
405x405	Multi/Bk	11'4" x 11'4" x 11"	3.45 x 3.45 x 0.28	127.7 (11.9)	116.7 (10.9)	1595 (724)	50/81	2" - 129"	7095
405x450	Multi/Bk	11'4" x 12'6" x 11"	3.45 x 3.81 x 0.28	141.3 (13.1)	129.6 (12.2)	1760 (799)	50/90	2" - 129"	7960
405x495	Multi/Bk	11'4" x 13'9" x 11"	3.45 x 4.18 x 0.28	154.9 (14.4)	142.6 (13.5)	1880 (853)	50/99	2" - 129"	8705
405x540	Multi/Bk	11'4" x 14'11" x 11"	3.45 x 4.55 x 0.28	168.4 (15.7)	155.6 (14.5)	1995 (905)	50/108	2" - 129"	9450
405x585	Multi/Bk	11'4" x 16'2" x 11"	3.45 x 4.91 x 0.28	182 (16.9)	168.5 (15.8)	2160 (980)	50/117	2" - 129"	10310
405x630	Multi/Bk	11'4" x 17'4" x 11"	3.45 x 5.28 x 0.28	195.5 (18.2)	181.5 (17.2)	2280 (1035)	50/126	2" - 129"	11055
405x675	Multi/Bk	11'4" x 18'6" x 11"	3.45 x 5.64 x 0.28	209.1 (19.5)	194.4 (18.2)	2395 (1087)	50/135	2" - 129"	12340
405x720	Multi/Bk	11'4" x 19'9" x 11"	3.45 x 6.01 x 0.28	222.7 (20.7)	207.4 (19.5)	2560 (1162)	50/144	2" - 129"	13200
405x765	Multi/Bk	11'4" x 20'11" x 11"	3.45 x 6.38 x 0.28	236.2 (22.0)	220.4 (20.8)	2680 (1216)	50/153	2" - 129"	13945
405x810	Multi/Bk	11'4" x 22'2" x 11"	3.45 x 6.74 x 0.28	249.8 (23.3)	233.3 (21.8)	2795 (1268)	50/162	2" - 129"	14690
405x855	Multi/Bk	11'4" x 23'4" x 11"	3.45 x 7.11 x 0.28	263.3 (24.5)	246.3 (23.1)	2960 (1343)	50/171	2" - 129"	15555
405x900	Multi/Bk	11'4" x 24'6" x 11"	3.45 x 7.47 x 0.28	276.9 (25.8)	259.2 (24.4)	3080 (1398)	50/180	2" - 129"	16295
405x945	Multi/Bk	11'4" x 25'9" x 11"	3.45 x 7.84 x 0.28	290.5 (27.0)	272.2 (25.4)	3195 (1450)	50/189	2" - 129"	17040
405x990	Multi/Bk	11'4" x 26'11" x 11"	3.45 x 8.2 x 0.28	304 (28.3)	285.2 (26.7)	3380 (1534)	50/198	2" - 129"	17905
405x1035	Multi/Bk	11'4" x 28'2" x 11"	3.45 x 8.57 x 0.28	317.6 (29.6)	298.1 (28.1)	3500 (1588)	50/207	2" - 129"	18645
405x1080	Multi/Bk	11'4" x 29'4" x 11"	3.45 x 8.94 x 0.28	331.1 (30.8)	311.1 (29.0)	3615 (1640)	50/216	2" - 129"	19390
405x1125	Multi/Bk	11'4" x 30'6" x 11"	3.45 x 9.3 x 0.28	344.7 (32.1)	324 (30.4)	3780 (1715)	50/225	2" - 129"	20255
405x1170	Multi/Bk	11'4" x 31'9" x 11"	3.45 x 9.67 x 0.28	358.3 (33.4)	337 (31.7)	4035 (1831)	50/234	2" - 129"	20995
405x1215	Multi/Bk	11'4" x 32'11" x 11"	3.45 x 10.03 x 0.28	371.8 (34.6)	350 (32.7)	4150 (1883)	50/243	2" - 129"	21740
405x1260	Multi/Bk	11'4" x 34'2" x 11"	3.45 x 10.4 x 0.28	385.4 (35.9)	362.9 (34.0)	4315 (1958)	50/252	2" - 129"	22605
405x1305	Multi/Bk	11'4" x 35'4" x 11"	3.45 x 10.76 x 0.28	398.9 (37.1)	375.9 (35.3)	4435 (2012)	50/261	2" - 129"	23345
405x1350	Multi/Bk	11'4" x 36'6" x 11"	3.45 x 11.13 x 0.28	412.5 (38.4)	388.8 (36.3)	4550 (2064)	50/270	2" - 129"	24090
405x1395	Multi/Bk	11'4" x 37'9" x 11"	3.45 x 11.5 x 0.28	426.1 (39.7)	401.8 (37.6)	4715 (2139)	50/279	2" - 129"	24955
450x180	Multi/Bk	12'6" x 5'4" x 11"	3.81 x 1.62 x 0.28	66.3 (6.2)	57.6 (5.6)	1015 (461)	56/36	2" - 144"	3635
450x225	Multi/Bk	12'6" x 6'6" x 11"	3.81 x 1.99 x 0.28	81.3 (7.6)	72 (7.0)	1145 (520)	56/45	2" - 144"	4460
450x270	Multi/Bk	12'6" x 7'9" x 11"	3.81 x 2.35 x 0.28	96.3 (9.0)	86.4 (8.1)	1280 (581)	56/54	2" - 144"	5285
450x315	Multi/Bk	12'6" x 8'11" x 11"	3.81 x 2.72 x 0.28	111.3 (10.4)	100.8 (9.6)	1450 (658)	56/63	2" - 144"	6230
450x360	Multi/Bk	12'6" x 10'2" x 11"	3.81 x 3.08 x 0.28	126.3 (11.7)	115.2 (11.1)	1580 (717)	56/72	2" - 144"	7060
450x405	Multi/Bk	12'6" x 11'4" x 11"	3.81 x 3.45 x 0.28	141.3 (13.1)	129.6 (12.2)	1715 (778)	56/81	2" - 144"	7885
450x450	Multi/Bk	12'6" x 12'6" x 11"	3.81 x 3.81 x 0.28	156.3 (14.5)	144 (13.7)	1880 (853)	56/90	2" - 144"	8830
450x495	Multi/Bk	12'6" x 13'9" x 11"	3.81 x 4.18 x 0.28	171.3 (15.9)	158.4 (15.2)	2015 (914)	56/99	2" - 144"	9655
450x540	Multi/Bk	12'6" x 14'11" x 11"	3.81 x 4.55 x 0.28	186.3 (17.3)	172.8 (16.3)	2150 (976)	56/108	2" - 144"	10480
450x585	Multi/Bk	12'6" x 16'2" x 11"	3.81 x 4.91 x 0.28	201.3 (18.7)	187.2 (17.8)	2315 (1051)	56/117	2" - 144"	11430
450x630	Multi/Bk	12'6" x 17'4" x 11"	3.81 x 5.28 x 0.28	216.3 (20.1)	201.6 (19.2)	2450 (1112)	56/126	2" - 144"	12255
450x675	Multi/Bk	12'6" x 18'6" x 11"	3.81 x 5.64 x 0.28	231.3 (21.5)	216 (20.4)	2585 (1173)	56/135	2" - 144"	14160
450x720	Multi/Bk	12'6" x 19'9" x 11"	3.81 x 6.01 x 0.28	246.3 (22.9)	230.4 (21.8)	2750 (1248)	56/144	2" - 144"	15110
450x765	Multi/Bk	12'6" x 20'11" x 11"	3.81 x 6.38 x 0.28	261.3 (24.3)	244.8 (23.3)	2885 (1309)	56/153	2" - 144"	15935
450x810	Multi/Bk	12'6" x 22'2" x 11"	3.81 x 6.74 x 0.28	276.3 (25.7)	259.2 (24.4)	3020 (1370)	56/162	2" - 144"	16760
450x855	Multi/Bk	12'6" x 23'4" x 11"	3.81 x 7.11 x 0.28	291.3 (27.1)	273.6 (25.9)	3185 (1445)	56/171	2" - 144"	17705
450x900	Multi/Bk	12'6" x 24'6" x 11"	3.81 x 7.47 x 0.28	306.3 (28.5)	288 (27.4)	3320 (1506)	56/180	2" - 144"	18530
450x945	Multi/Bk	12'6" x 25'9" x 11"	3.81 x 7.84 x 0.28	321.3 (29.9)	302.4 (28.5)	3455 (1568)	56/189	2" - 144"	19360
450x990	Multi/Bk	12'6" x 26'11" x 11"	3.81 x 8.2 x 0.28	336.3 (31.2)	316.8 (30.0)	3640 (1652)	56/198	2" - 144"	20305
450x1035	Multi/Bk	12'6" x 28'2" x 11"	3.81 x 8.57 x 0.28	351.3 (32.7)	331.2 (31.5)	3775 (1713)	56/207	2" - 144"	21130
450x1080	Multi/Bk	12'6" x 29'4" x 11"	3.81 x 8.94 x 0.28	366.3 (34.1)	345.6 (32.6)	3910 (1774)	56/216	2" - 144"	21955
450x1125	Multi/Bk	12'6" x 30'6" x 11"	3.81 x 9.3 x 0.28	381.3 (35.4)	360 (34.0)	4075 (1849)	56/225	2" - 144"	22900
450x1170	Multi/Bk	12'6" x 31'9" x 11"	3.81 x 9.67 x 0.28	396.3 (36.8)	374.4 (35.5)	4355 (1976)	56/234	2" - 144"	23730
450x1215	Multi/Bk	12'6" x 32'11" x 11"	3.81 x 10.03 x 0.28	411.3 (38.2)	388.8 (36.6)	4490 (2037)	56/243	2" - 144"	24555
450x1260	Multi/Bk	12'6" x 34'2" x 11"	3.81 x 10.4 x 0.28	426.3 (39.6)	403.2 (38.1)	4655 (2112)	56/252	2" - 144"	25500
450x1305	Multi/Bk	12'6" x 35'4" x 11"	3.81 x 10.76 x 0.28	441.3 (41.0)	417.6 (39.6)	4790 (2173)	56/261	2" - 144"	26325
450x1350	Multi/Bk	12'6" x 36'6" x 11"	3.81 x 11.13 x 0.28	456.3 (42.4)	432 (40.7)	4925 (2234)	56/270	2" - 144"	27150
450x1395	Multi/Bk	12'6" x 37'9" x 11"	3.81 x 11.5 x 0.28	471.3 (43.8)	446.4 (42.2)	5090 (2309)	56/279	2" - 144"	28100
495x180	Multi/Bk	13'9" x 5'4" x 11"	4.18 x 1.62 x 0.28	72.7 (6.8)	63.4 (6.2)	1080 (490)	61/36	2" - 158"	3965
495x225	Multi/Bk	13'9" x 6'6" x 11"	4.18 x 1.99 x 0.28	89.1 (8.3)	79.2 (7.8)	1225 (556)	61/45	2" - 158"	4875
495x270	Multi/Bk	13'9" x 7'9" x 11"	4.18 x 2.35 x 0.28	105.5 (9.8)	95.1 (9.0)	1365 (620)	61/54	2" - 158"	5780
495x315	Multi/Bk	13'9" x 8'11" x 11"	4.18 x 2.72 x 0.28	122 (11.4)	110.9 (10.7)	1550 (704)	61/63	2" - 158"	6810
495x360	Multi/Bk	13'9" x 10'2" x 11"	4.18 x 3.08 x 0.28	138.4 (12.9)	126.8 (12.3)	1690 (767)	61/72	2" - 158"	7720



# GALAXY® GT6x 8 MM PRODUCT SPECIFICATIONS

Lines x Columns	Sections/Ventilated	Cabinet Dimensions Feet-Inches H x W x D	Cabinet Dimensions Meters H x W x D	Cabinet Square Feet (Square Meters)	Active Area Square Feet (Square Meters)	Cabinet Weight Pounds (kilograms)	Lines/Characters per line	Character Height	Maximum Watts RGB
495x405	Multi/Bk	13'9" x 11'4" x 11"	4.18 x 3.45 x 0.28	154.9 (14.4)	142.6 (13.5)	1835 (833)	61/81	2" - 158"	8630
495x450	Multi/Bk	13'9" x 12'6" x 11"	4.18 x 3.81 x 0.28	171.3 (15.9)	158.4 (15.2)	2020 (917)	61/90	2" - 158"	9655
495x495	Multi/Bk	13'9" x 13'9" x 11"	4.18 x 4.18 x 0.28	187.7 (17.5)	174.3 (16.8)	2160 (980)	61/99	2" - 158"	10565
495x540	Multi/Bk	13'9" x 14'11" x 11"	4.18 x 4.55 x 0.28	204.2 (19.0)	190.1 (18.0)	2300 (1044)	61/108	2" - 158"	11475
495x585	Multi/Bk	13'9" x 16'2" x 11"	4.18 x 4.91 x 0.28	220.6 (20.5)	206 (19.7)	2490 (1130)	61/117	2" - 158"	13045
495x630	Multi/Bk	13'9" x 17'4" x 11"	4.18 x 5.28 x 0.28	237.1 (22.1)	221.8 (21.3)	2630 (1193)	61/126	2" - 158"	13950
495x675	Multi/Bk	13'9" x 18'6" x 11"	4.18 x 5.64 x 0.28	253.5 (23.6)	237.6 (22.6)	2770 (1257)	61/135	2" - 158"	15400
495x720	Multi/Bk	13'9" x 19'9" x 11"	4.18 x 6.01 x 0.28	269.9 (25.1)	253.5 (24.2)	2960 (1343)	61/144	2" - 158"	16430
495x765	Multi/Bk	13'9" x 20'11" x 11"	4.18 x 6.38 x 0.28	286.4 (26.7)	269.3 (25.8)	3100 (1407)	61/153	2" - 158"	17340
495x810	Multi/Bk	13'9" x 22'2" x 11"	4.18 x 6.74 x 0.28	302.8 (28.2)	285.2 (27.1)	3240 (1470)	61/162	2" - 158"	18245
495x855	Multi/Bk	13'9" x 23'4" x 11"	4.18 x 7.11 x 0.28	319.3 (29.7)	301 (28.7)	3430 (1556)	61/171	2" - 158"	19275
495x900	Multi/Bk	13'9" x 24'6" x 11"	4.18 x 7.47 x 0.28	335.7 (31.2)	316.8 (30.3)	3570 (1620)	61/180	2" - 158"	20185
495x945	Multi/Bk	13'9" x 25'9" x 11"	4.18 x 7.84 x 0.28	352.1 (32.8)	332.7 (31.6)	3710 (1683)	61/189	2" - 158"	21095
495x990	Multi/Bk	13'9" x 26'11" x 11"	4.18 x 8.2 x 0.28	368.6 (34.3)	348.5 (33.2)	3915 (1776)	61/198	2" - 158"	22120
495x1035	Multi/Bk	13'9" x 28'2" x 11"	4.18 x 8.57 x 0.28	385 (35.8)	364.4 (34.9)	4060 (1842)	61/207	2" - 158"	23030
495x1080	Multi/Bk	13'9" x 29'4" x 11"	4.18 x 8.94 x 0.28	401.5 (37.4)	380.2 (36.1)	4200 (1906)	61/216	2" - 158"	23940
495x1125	Multi/Bk	13'9" x 30'6" x 11"	4.18 x 9.3 x 0.28	417.9 (38.9)	396 (37.7)	4385 (1990)	61/225	2" - 158"	24965
495x1170	Multi/Bk	13'9" x 31'9" x 11"	4.18 x 9.67 x 0.28	434.3 (40.4)	411.9 (39.4)	4680 (2123)	61/234	2" - 158"	25875
495x1215	Multi/Bk	13'9" x 32'11" x 11"	4.18 x 10.03 x 0.28	450.8 (41.9)	427.7 (40.6)	4825 (2189)	61/243	2" - 158"	26785
495x1260	Multi/Bk	13'9" x 34'2" x 11"	4.18 x 10.4 x 0.28	467.2 (43.5)	443.6 (42.2)	5010 (2273)	61/252	2" - 158"	27815
495x1305	Multi/Bk	13'9" x 35'4" x 11"	4.18 x 10.76 x 0.28	483.7 (45.0)	459.4 (43.9)	5150 (2337)	61/261	2" - 158"	28720
495x1350	Multi/Bk	13'9" x 36'6" x 11"	4.18 x 11.13 x 0.28	500.1 (46.5)	475.2 (45.1)	5290 (2400)	61/270	2" - 158"	29630
495x1395	Multi/Bk	13'9" x 37'9" x 11"	4.18 x 11.5 x 0.28	516.5 (48.1)	491.1 (46.7)	5480 (2486)	61/279	2" - 158"	30660
540x180	Multi/Bk	14'11" x 5'4" x 11"	4.55 x 1.62 x 0.28	79 (7.4)	69.2 (6.6)	1135 (515)	67/36	2" - 172"	4295
540x225	Multi/Bk	14'11" x 6'6" x 11"	4.55 x 1.99 x 0.28	96.9 (9.1)	86.4 (8.4)	1290 (586)	67/45	2" - 172"	5285
540x270	Multi/Bk	14'11" x 7'9" x 11"	4.55 x 2.35 x 0.28	114.8 (10.7)	103.7 (9.7)	1450 (658)	67/54	2" - 172"	6280
540x315	Multi/Bk	14'11" x 8'11" x 11"	4.55 x 2.72 x 0.28	132.7 (12.4)	121 (11.4)	1640 (744)	67/63	2" - 172"	7390
540x360	Multi/Bk	14'11" x 10'2" x 11"	4.55 x 3.08 x 0.28	150.5 (14.0)	138.3 (13.2)	1795 (815)	67/72	2" - 172"	8380
540x405	Multi/Bk	14'11" x 11'4" x 11"	4.55 x 3.45 x 0.28	168.4 (15.7)	155.6 (14.5)	1950 (885)	67/81	2" - 172"	9370
540x450	Multi/Bk	14'11" x 12'6" x 11"	4.55 x 3.81 x 0.28	186.3 (17.3)	172.8 (16.3)	2140 (971)	67/90	2" - 172"	10480
540x495	Multi/Bk	14'11" x 13'9" x 11"	4.55 x 4.18 x 0.28	204.2 (19.0)	190.1 (18.0)	2300 (1044)	67/99	2" - 172"	11475
540x540	Multi/Bk	14'11" x 14'11" x 11"	4.55 x 4.55 x 0.28	222.1 (20.7)	207.4 (19.4)	2455 (1114)	67/108	2" - 172"	12465
540x585	Multi/Bk	14'11" x 16'2" x 11"	4.55 x 4.91 x 0.28	239.9 (22.3)	224.7 (21.1)	2645 (1200)	67/117	2" - 172"	14655
540x630	Multi/Bk	14'11" x 17'4" x 11"	4.55 x 5.28 x 0.28	257.8 (24.0)	242 (22.9)	2805 (1273)	67/126	2" - 172"	15650
540x675	Multi/Bk	14'11" x 18'6" x 11"	4.55 x 5.64 x 0.28	275.7 (25.7)	259.2 (24.2)	2960 (1343)	67/135	2" - 172"	16640
540x720	Multi/Bk	14'11" x 19'9" x 11"	4.55 x 6.01 x 0.28	293.6 (27.3)	276.5 (26.0)	3150 (1429)	67/144	2" - 172"	17750
540x765	Multi/Bk	14'11" x 20'11" x 11"	4.55 x 6.38 x 0.28	311.5 (29.0)	293.8 (27.7)	3305 (1500)	67/153	2" - 172"	18740
540x810	Multi/Bk	14'11" x 22'2" x 11"	4.55 x 6.74 x 0.28	329.3 (30.7)	311.1 (29.0)	3465 (1572)	67/162	2" - 172"	19735
540x855	Multi/Bk	14'11" x 23'4" x 11"	4.55 x 7.11 x 0.28	347.2 (32.4)	328.4 (30.8)	3655 (1658)	67/171	2" - 172"	20845
540x900	Multi/Bk	14'11" x 24'6" x 11"	4.55 x 7.47 x 0.28	365.1 (34.0)	345.6 (32.6)	3810 (1729)	67/180	2" - 172"	21835
540x945	Multi/Bk	14'11" x 25'9" x 11"	4.55 x 7.84 x 0.28	383 (35.7)	362.9 (33.9)	3970 (1801)	67/189	2" - 172"	22830
540x990	Multi/Bk	14'11" x 26'11" x 11"	4.55 x 8.2 x 0.28	400.9 (37.3)	380.2 (35.6)	4175 (1894)	67/198	2" - 172"	23940
540x1035	Multi/Bk	14'11" x 28'2" x 11"	4.55 x 8.57 x 0.28	418.7 (39.0)	397.5 (37.4)	4335 (1967)	67/207	2" - 172"	24930
540x1080	Multi/Bk	14'11" x 29'4" x 11"	4.55 x 8.94 x 0.28	436.6 (40.7)	414.8 (38.7)	4490 (2037)	67/216	2" - 172"	25920
540x1125	Multi/Bk	14'11" x 30'6" x 11"	4.55 x 9.3 x 0.28	454.5 (42.3)	432 (40.5)	4680 (2123)	67/225	2" - 172"	27030
540x1170	Multi/Bk	14'11" x 31'9" x 11"	4.55 x 9.67 x 0.28	472.4 (44.0)	449.3 (42.2)	5000 (2268)	67/234	2" - 172"	28025
540x1215	Multi/Bk	14'11" x 32'11" x 11"	4.55 x 10.03 x 0.28	490.3 (45.6)	466.6 (43.6)	5160 (2341)	67/243	2" - 172"	29015
540x1260	Multi/Bk	14'11" x 34'2" x 11"	4.55 x 10.4 x 0.28	508.1 (47.3)	483.9 (45.3)	5350 (2427)	67/252	2" - 172"	30125
540x1305	Multi/Bk	14'11" x 35'4" x 11"	4.55 x 10.76 x 0.28	526 (49.0)	501.2 (47.1)	5505 (2498)	67/261	2" - 172"	31120
540x1350	Multi/Bk	14'11" x 36'6" x 11"	4.55 x 11.13 x 0.28	543.9 (50.6)	518.4 (48.4)	5665 (2570)	67/270	2" - 172"	32110
540x1395	Multi/Bk	14'11" x 37'9" x 11"	4.55 x 11.5 x 0.28	561.8 (52.3)	535.7 (50.2)	5855 (2656)	67/279	2" - 172"	33220
585x180	Multi/Bk	16'2" x 5'4" x 11"	4.91 x 1.62 x 0.28	85.4 (8.0)	74.9 (7.2)	1205 (547)	73/36	2" - 187"	4625
585x225	Multi/Bk	16'2" x 6'6" x 11"	4.91 x 1.99 x 0.28	104.7 (9.8)	93.6 (9.1)	1370 (622)	73/45	2" - 187"	5700
585x270	Multi/Bk	16'2" x 7'9" x 11"	4.91 x 2.35 x 0.28	124 (11.5)	112.4 (10.6)	1540 (699)	73/54	2" - 187"	6775
585x315	Multi/Bk	16'2" x 8'11" x 11"	4.91 x 2.72 x 0.28	143.3 (13.4)	131.1 (12.5)	1745 (792)	73/63	2" - 187"	7970
585x360	Multi/Bk	16'2" x 10'2" x 11"	4.91 x 3.08 x 0.28	162.7 (15.1)	149.8 (14.4)	1915 (869)	73/72	2" - 187"	9040
585x405	Multi/Bk	16'2" x 11'4" x 11"	4.91 x 3.45 x 0.28	182 (16.9)	168.5 (15.8)	2080 (944)	73/81	2" - 187"	10115





# GALAXY® GT6x 8 MM PRODUCT SPECIFICATIONS

Lines x Columns	Sections/Ventilated	Cabinet Dimensions Feet-Inches H x W x D	Cabinet Dimensions Meters H x W x D	Cabinet Square Feet (Square Meters)	Active Area Square Feet (Square Meters)	Cabinet Weight Pounds (kilograms)	Lines/Characters per line	Character Height	Maximum Watts RGB
585x450	Multi/Bk	16'2" x 12'6" x 11"	4.91 x 3.81 x 0.28	201.3 (18.7)	187.2 (17.8)	2290 (1039)	73/90	2" - 187"	11310
585x495	Multi/Bk	16'2" x 13'9" x 11"	4.91 x 4.18 x 0.28	220.6 (20.5)	206 (19.7)	2455 (1114)	73/99	2" - 187"	12925
585x540	Multi/Bk	16'2" x 14'11" x 11"	4.91 x 4.55 x 0.28	239.9 (22.3)	224.7 (21.1)	2620 (1189)	73/108	2" - 187"	13995
585x585	Multi/Bk	16'2" x 16'2" x 11"	4.91 x 4.91 x 0.28	259.3 (24.1)	243.4 (23.0)	2830 (1284)	73/117	2" - 187"	15730
585x630	Multi/Bk	16'2" x 17'4" x 11"	4.91 x 5.28 x 0.28	278.6 (25.9)	262.1 (25.0)	2995 (1359)	73/126	2" - 187"	16805
585x675	Multi/Bk	16'2" x 18'6" x 11"	4.91 x 5.64 x 0.28	297.9 (27.7)	280.8 (26.4)	3160 (1434)	73/135	2" - 187"	17880
585x720	Multi/Bk	16'2" x 19'9" x 11"	4.91 x 6.01 x 0.28	317.2 (29.5)	299.6 (28.3)	3370 (1529)	73/144	2" - 187"	19070
585x765	Multi/Bk	16'2" x 20'11" x 11"	4.91 x 6.38 x 0.28	336.5 (31.3)	318.3 (30.2)	3535 (1604)	73/153	2" - 187"	20145
585x810	Multi/Bk	16'2" x 22'2" x 11"	4.91 x 6.74 x 0.28	355.9 (33.1)	337 (31.7)	3700 (1679)	73/162	2" - 187"	21220
585x855	Multi/Bk	16'2" x 23'4" x 11"	4.91 x 7.11 x 0.28	375.2 (34.9)	355.7 (33.6)	3910 (1774)	73/171	2" - 187"	22415
585x900	Multi/Bk	16'2" x 24'6" x 11"	4.91 x 7.47 x 0.28	394.5 (36.7)	374.4 (35.5)	4075 (1849)	73/180	2" - 187"	23490
585x945	Multi/Bk	16'2" x 25'9" x 11"	4.91 x 7.84 x 0.28	413.8 (38.5)	393.2 (37.0)	4240 (1924)	73/189	2" - 187"	24560
585x990	Multi/Bk	16'2" x 26'11" x 11"	4.91 x 8.2 x 0.28	433.1 (40.3)	411.9 (38.9)	4470 (2028)	73/198	2" - 187"	25755
585x1035	Multi/Bk	16'2" x 28'2" x 11"	4.91 x 8.57 x 0.28	452.5 (42.1)	430.6 (40.8)	4635 (2103)	73/207	2" - 187"	26830
585x1080	Multi/Bk	16'2" x 29'4" x 11"	4.91 x 8.94 x 0.28	471.8 (43.9)	449.3 (42.2)	4805 (2180)	73/216	2" - 187"	27905
585x1125	Multi/Bk	16'2" x 30'6" x 11"	4.91 x 9.3 x 0.28	491.1 (45.7)	468 (44.2)	5010 (2273)	73/225	2" - 187"	29095
585x1170	Multi/Bk	16'2" x 31'9" x 11"	4.91 x 9.67 x 0.28	510.4 (47.5)	486.8 (46.1)	5350 (2427)	73/234	2" - 187"	30170
585x1215	Multi/Bk	16'2" x 32'11" x 11"	4.91 x 10.03 x 0.28	529.7 (49.2)	505.5 (47.5)	5515 (2502)	73/243	2" - 187"	31245
585x1260	Multi/Bk	16'2" x 34'2" x 11"	4.91 x 10.4 x 0.28	549.1 (51.1)	524.2 (49.4)	5725 (2597)	73/252	2" - 187"	32440
585x1305	Multi/Bk	16'2" x 35'4" x 11"	4.91 x 10.76 x 0.28	568.4 (52.8)	542.9 (51.4)	5890 (2672)	73/261	2" - 187"	33515
585x1350	Multi/Bk	16'2" x 36'6" x 11"	4.91 x 11.13 x 0.28	587.7 (54.6)	561.6 (52.8)	6060 (2749)	73/270	2" - 187"	34590
585x1395	Multi/Bk	16'2" x 37'9" x 11"	4.91 x 11.5 x 0.28	607 (56.5)	580.4 (54.7)	6265 (2842)	73/279	2" - 187"	35780
630x180	Multi/Bk	17'4" x 5'4" x 11"	5.28 x 1.62 x 0.28	91.7 (8.6)	80.7 (7.8)	1280 (581)	78/36	2" - 201"	4955
630x225	Multi/Bk	17'4" x 6'6" x 11"	5.28 x 1.99 x 0.28	112.5 (10.5)	100.8 (9.9)	1455 (660)	78/45	2" - 201"	6110
630x270	Multi/Bk	17'4" x 7'9" x 11"	5.28 x 2.35 x 0.28	133.3 (12.4)	121 (11.4)	1625 (738)	78/54	2" - 201"	7270
630x315	Multi/Bk	17'4" x 8'11" x 11"	5.28 x 2.72 x 0.28	154 (14.4)	141.2 (13.5)	1855 (842)	78/63	2" - 201"	8545
630x360	Multi/Bk	17'4" x 10'2" x 11"	5.28 x 3.08 x 0.28	174.8 (16.3)	161.3 (15.6)	2030 (921)	78/72	2" - 201"	9700
630x405	Multi/Bk	17'4" x 11'4" x 11"	5.28 x 3.45 x 0.28	195.5 (18.2)	181.5 (17.2)	2205 (1001)	78/81	2" - 201"	10860
630x450	Multi/Bk	17'4" x 12'6" x 11"	5.28 x 3.81 x 0.28	216.3 (20.1)	201.6 (19.2)	2435 (1105)	78/90	2" - 201"	12135
630x495	Multi/Bk	17'4" x 13'9" x 11"	5.28 x 4.18 x 0.28	237.1 (22.1)	221.8 (21.3)	2610 (1184)	78/99	2" - 201"	14370
630x540	Multi/Bk	17'4" x 14'11" x 11"	5.28 x 4.55 x 0.28	257.8 (24.0)	242 (22.9)	2780 (1261)	78/108	2" - 201"	15530
630x585	Multi/Bk	17'4" x 16'2" x 11"	5.28 x 4.91 x 0.28	278.6 (25.9)	262.1 (25.0)	3010 (1366)	78/117	2" - 201"	16805
630x630	Multi/Bk	17'4" x 17'4" x 11"	5.28 x 5.28 x 0.28	299.3 (27.9)	282.3 (27.0)	3185 (1445)	78/126	2" - 201"	17960
630x675	Multi/Bk	17'4" x 18'6" x 11"	5.28 x 5.64 x 0.28	320.1 (29.8)	302.4 (28.6)	3360 (1525)	78/135	2" - 201"	19120
630x720	Multi/Bk	17'4" x 19'9" x 11"	5.28 x 6.01 x 0.28	340.9 (31.7)	322.6 (30.7)	3590 (1629)	78/144	2" - 201"	20395
630x765	Multi/Bk	17'4" x 20'11" x 11"	5.28 x 6.38 x 0.28	361.6 (33.7)	342.8 (32.8)	3765 (1708)	78/153	2" - 201"	21550
630x810	Multi/Bk	17'4" x 22'2" x 11"	5.28 x 6.74 x 0.28	382.4 (35.6)	362.9 (34.3)	3940 (1788)	78/162	2" - 201"	22710
630x855	Multi/Bk	17'4" x 23'4" x 11"	5.28 x 7.11 x 0.28	403.1 (37.5)	383.1 (36.4)	4165 (1890)	78/171	2" - 201"	23985
630x900	Multi/Bk	17'4" x 24'6" x 11"	5.28 x 7.47 x 0.28	423.9 (39.4)	403.2 (38.5)	4340 (1969)	78/180	2" - 201"	25140
630x945	Multi/Bk	17'4" x 25'9" x 11"	5.28 x 7.84 x 0.28	444.7 (41.4)	423.4 (40.0)	4515 (2048)	78/189	2" - 201"	26295
630x990	Multi/Bk	17'4" x 26'11" x 11"	5.28 x 8.2 x 0.28	465.4 (43.3)	443.6 (42.1)	4765 (2162)	78/198	2" - 201"	27575
630x1035	Multi/Bk	17'4" x 28'2" x 11"	5.28 x 8.57 x 0.28	486.2 (45.2)	463.7 (44.2)	4940 (2241)	78/207	2" - 201"	28730
630x1080	Multi/Bk	17'4" x 29'4" x 11"	5.28 x 8.94 x 0.28	506.9 (47.2)	483.9 (45.8)	5115 (2321)	78/216	2" - 201"	29885
630x1125	Multi/Bk	17'4" x 30'6" x 11"	5.28 x 9.3 x 0.28	527.7 (49.1)	504 (47.8)	5345 (2425)	78/225	2" - 201"	31160
630x1170	Multi/Bk	17'4" x 31'9" x 11"	5.28 x 9.67 x 0.28	548.5 (51.1)	524.2 (49.9)	5700 (2586)	78/234	2" - 201"	32320
630x1215	Multi/Bk	17'4" x 32'11" x 11"	5.28 x 10.03 x 0.28	569.2 (53.0)	544.4 (51.5)	5875 (2665)	78/243	2" - 201"	33475
630x1260	Multi/Bk	17'4" x 34'2" x 11"	5.28 x 10.4 x 0.28	590 (54.9)	564.5 (53.6)	6105 (2770)	78/252	2" - 201"	34750
630x1305	Multi/Bk	17'4" x 35'4" x 11"	5.28 x 10.76 x 0.28	610.7 (56.8)	584.7 (55.6)	6280 (2849)	78/261	2" - 201"	35910
630x1350	Multi/Bk	17'4" x 36'6" x 11"	5.28 x 11.13 x 0.28	631.5 (58.8)	604.8 (57.2)	6450 (2926)	78/270	2" - 201"	37065
630x1395	Multi/Bk	17'4" x 37'9" x 11"	5.28 x 11.5 x 0.28	652.3 (60.7)	625 (59.3)	6680 (3030)	78/279	2" - 201"	38340
675x180	Multi/Bk	18'6" x 5'4" x 11"	5.64 x 1.62 x 0.28	98.1 (9.1)	86.4 (8.3)	1330 (604)	84/36	2" - 216"	5285
675x225	Multi/Bk	18'6" x 6'6" x 11"	5.64 x 1.99 x 0.28	120.3 (11.2)	108 (10.5)	1510 (685)	84/45	2" - 216"	6525
675x270	Multi/Bk	18'6" x 7'9" x 11"	5.64 x 2.35 x 0.28	142.5 (13.3)	129.6 (12.1)	1695 (769)	84/54	2" - 216"	7765
675x315	Multi/Bk	18'6" x 8'11" x 11"	5.64 x 2.72 x 0.28	164.7 (15.3)	151.2 (14.3)	1935 (878)	84/63	2" - 216"	9125
675x360	Multi/Bk	18'6" x 10'2" x 11"	5.64 x 3.08 x 0.28	186.9 (17.4)	172.8 (16.5)	2115 (960)	84/72	2" - 216"	10365
675x405	Multi/Bk	18'6" x 11'4" x 11"	5.64 x 3.45 x 0.28	209.1 (19.5)	194.4 (18.2)	2295 (1041)	84/81	2" - 216"	11600
675x450	Multi/Bk	18'6" x 12'6" x 11"	5.64 x 3.81 x 0.28	231.3 (21.5)	216 (20.4)	2535 (1150)	84/90	2" - 216"	13500



# GALAXY® GT6x 8 MM PRODUCT SPECIFICATIONS

Lines x Columns	Sections/Ventilated	Cabinet Dimensions Feet-Inches H x W x D	Cabinet Dimensions Meters H x W x D	Cabinet Square Feet (Square Meters)	Active Area Square Feet (Square Meters)	Cabinet Weight Pounds (kilograms)	Lines/Characters per line	Character Height	Maximum Watts RGB
675x495	Multi/Bk	18'6" x 13'9" x 11"	5.64 x 4.18 x 0.28	253.5 (23.6)	237.6 (22.6)	2720 (1234)	84/99	2" - 216"	15280
675x540	Multi/Bk	18'6" x 14'11" x 11"	5.64 x 4.55 x 0.28	275.7 (25.7)	259.2 (24.2)	2900 (1316)	84/108	2" - 216"	16520
675x585	Multi/Bk	18'6" x 16'2" x 11"	5.64 x 4.91 x 0.28	297.9 (27.7)	280.8 (26.4)	3140 (1425)	84/117	2" - 216"	17880
675x630	Multi/Bk	18'6" x 17'4" x 11"	5.64 x 5.28 x 0.28	320.1 (29.8)	302.4 (28.6)	3325 (1509)	84/126	2" - 216"	19120
675x675	Multi/Bk	18'6" x 18'6" x 11"	5.64 x 5.64 x 0.28	342.3 (31.8)	324 (30.3)	3505 (1590)	84/135	2" - 216"	20355
675x720	Multi/Bk	18'6" x 19'9" x 11"	5.64 x 6.01 x 0.28	364.5 (33.9)	345.6 (32.5)	3745 (1699)	84/144	2" - 216"	21715
675x765	Multi/Bk	18'6" x 20'11" x 11"	5.64 x 6.38 x 0.28	386.7 (36.0)	367.2 (34.7)	3925 (1781)	84/153	2" - 216"	22955
675x810	Multi/Bk	18'6" x 22'2" x 11"	5.64 x 6.74 x 0.28	408.9 (38.0)	388.8 (36.3)	4110 (1865)	84/162	2" - 216"	24195
675x855	Multi/Bk	18'6" x 23'4" x 11"	5.64 x 7.11 x 0.28	431.1 (40.1)	410.4 (38.5)	4350 (1974)	84/171	2" - 216"	25555
675x900	Multi/Bk	18'6" x 24'6" x 11"	5.64 x 7.47 x 0.28	453.3 (42.1)	432 (40.7)	4530 (2055)	84/180	2" - 216"	26790
675x945	Multi/Bk	18'6" x 25'9" x 11"	5.64 x 7.84 x 0.28	475.5 (44.2)	453.6 (42.4)	4710 (2137)	84/189	2" - 216"	28030
675x990	Multi/Bk	18'6" x 26'11" x 11"	5.64 x 8.2 x 0.28	497.7 (46.2)	475.2 (44.6)	4970 (2255)	84/198	2" - 216"	29390
675x1035	Multi/Bk	18'6" x 28'2" x 11"	5.64 x 8.57 x 0.28	519.9 (48.3)	496.8 (46.8)	5155 (2339)	84/207	2" - 216"	30630
675x1080	Multi/Bk	18'6" x 29'4" x 11"	5.64 x 8.94 x 0.28	542.1 (50.4)	518.4 (48.4)	5335 (2420)	84/216	2" - 216"	31870
675x1125	Multi/Bk	18'6" x 30'6" x 11"	5.64 x 9.3 x 0.28	564.3 (52.5)	540 (50.6)	5575 (2529)	84/225	2" - 216"	33230
675x1170	Multi/Bk	18'6" x 31'9" x 11"	5.64 x 9.67 x 0.28	586.5 (54.5)	561.6 (52.8)	5950 (2699)	84/234	2" - 216"	34470
675x1215	Multi/Bk	18'6" x 32'11" x 11"	5.64 x 10.03 x 0.28	608.7 (56.6)	583.2 (54.5)	6130 (2781)	84/243	2" - 216"	35705
675x1260	Multi/Bk	18'6" x 34'2" x 11"	5.64 x 10.4 x 0.28	630.9 (58.7)	604.8 (56.7)	6370 (2890)	84/252	2" - 216"	37065
675x1305	Multi/Bk	18'6" x 35'4" x 11"	5.64 x 10.76 x 0.28	653.1 (60.7)	626.4 (58.9)	6555 (2974)	84/261	2" - 216"	38305
675x1350	Multi/Bk	18'6" x 36'6" x 11"	5.64 x 11.13 x 0.28	675.3 (62.8)	648 (60.5)	6735 (3055)	84/270	2" - 216"	39545
675x1395	Multi/Bk	18'6" x 37'9" x 11"	5.64 x 11.5 x 0.28	697.5 (64.9)	669.6 (62.7)	6975 (3164)	84/279	2" - 216"	40905
720x180	Multi/Bk	19'9" x 5'4" x 11"	6.01 x 1.62 x 0.28	104.5 (9.7)	92.2 (8.9)	1380 (626)	90/36	2" - 230"	5615
720x225	Multi/Bk	19'9" x 6'6" x 11"	6.01 x 1.99 x 0.28	128.1 (12.0)	115.2 (11.2)	1570 (713)	90/45	2" - 230"	6940
720x270	Multi/Bk	19'9" x 7'9" x 11"	6.01 x 2.35 x 0.28	151.7 (14.1)	138.3 (13.0)	1760 (799)	90/54	2" - 230"	8260
720x315	Multi/Bk	19'9" x 8'11" x 11"	6.01 x 2.72 x 0.28	175.4 (16.3)	161.3 (15.3)	2010 (912)	90/63	2" - 230"	9700
720x360	Multi/Bk	19'9" x 10'2" x 11"	6.01 x 3.08 x 0.28	199 (18.5)	184.4 (17.7)	2200 (998)	90/72	2" - 230"	11025
720x405	Multi/Bk	19'9" x 11'4" x 11"	6.01 x 3.45 x 0.28	222.7 (20.7)	207.4 (19.5)	2390 (1085)	90/81	2" - 230"	12345
720x450	Multi/Bk	19'9" x 12'6" x 11"	6.01 x 3.81 x 0.28	246.3 (22.9)	230.4 (21.8)	2640 (1198)	90/90	2" - 230"	14870
720x495	Multi/Bk	19'9" x 13'9" x 11"	6.01 x 4.18 x 0.28	269.9 (25.1)	253.5 (24.2)	2830 (1284)	90/99	2" - 230"	16190
720x540	Multi/Bk	19'9" x 14'11" x 11"	6.01 x 4.55 x 0.28	293.6 (27.3)	276.5 (26.0)	3020 (1370)	90/108	2" - 230"	17510
720x585	Multi/Bk	19'9" x 16'2" x 11"	6.01 x 4.91 x 0.28	317.2 (29.5)	299.6 (28.3)	3270 (1484)	90/117	2" - 230"	18950
720x630	Multi/Bk	19'9" x 17'4" x 11"	6.01 x 5.28 x 0.28	340.9 (31.7)	322.6 (30.7)	3460 (1570)	90/126	2" - 230"	20275
720x675	Multi/Bk	19'9" x 18'6" x 11"	6.01 x 5.64 x 0.28	364.5 (33.9)	345.6 (32.5)	3650 (1656)	90/135	2" - 230"	21595
720x720	Multi/Bk	19'9" x 19'9" x 11"	6.01 x 6.01 x 0.28	388.1 (36.1)	368.7 (34.8)	3900 (1770)	90/144	2" - 230"	23040
720x765	Multi/Bk	19'9" x 20'11" x 11"	6.01 x 6.38 x 0.28	411.8 (38.3)	391.7 (37.2)	4090 (1856)	90/153	2" - 230"	24360
720x810	Multi/Bk	19'9" x 22'2" x 11"	6.01 x 6.74 x 0.28	435.4 (40.5)	414.8 (38.9)	4280 (1942)	90/162	2" - 230"	25680
720x855	Multi/Bk	19'9" x 23'4" x 11"	6.01 x 7.11 x 0.28	459.1 (42.7)	437.8 (41.3)	4530 (2055)	90/171	2" - 230"	27120
720x900	Multi/Bk	19'9" x 24'6" x 11"	6.01 x 7.47 x 0.28	482.7 (44.9)	460.8 (43.7)	4720 (2141)	90/180	2" - 230"	28445
720x945	Multi/Bk	19'9" x 25'9" x 11"	6.01 x 7.84 x 0.28	506.3 (47.1)	483.9 (45.4)	4905 (2225)	90/189	2" - 230"	29765
720x990	Multi/Bk	19'9" x 26'11" x 11"	6.01 x 8.2 x 0.28	530 (49.3)	506.9 (47.8)	5180 (2350)	90/198	2" - 230"	31210
720x1035	Multi/Bk	19'9" x 28'2" x 11"	6.01 x 8.57 x 0.28	553.6 (51.5)	530 (50.2)	5365 (2434)	90/207	2" - 230"	32530
720x1080	Multi/Bk	19'9" x 29'4" x 11"	6.01 x 8.94 x 0.28	577.3 (53.7)	553 (51.9)	5555 (2520)	90/216	2" - 230"	33850
720x1125	Multi/Bk	19'9" x 30'6" x 11"	6.01 x 9.3 x 0.28	600.9 (55.9)	576 (54.3)	5805 (2634)	90/225	2" - 230"	35295
720x1170	Multi/Bk	19'9" x 31'9" x 11"	6.01 x 9.67 x 0.28	624.5 (58.1)	599.1 (56.6)	6200 (2813)	90/234	2" - 230"	36615
720x1215	Multi/Bk	19'9" x 32'11" x 11"	6.01 x 10.03 x 0.28	648.2 (60.3)	622.1 (58.4)	6390 (2899)	90/243	2" - 230"	37935
720x1260	Multi/Bk	19'9" x 34'2" x 11"	6.01 x 10.4 x 0.28	671.8 (62.5)	645.2 (60.8)	6640 (3012)	90/252	2" - 230"	39380
720x1305	Multi/Bk	19'9" x 35'4" x 11"	6.01 x 10.76 x 0.28	695.5 (64.7)	668.2 (63.1)	6830 (3099)	90/261	2" - 230"	40700
720x1350	Multi/Bk	19'9" x 36'6" x 11"	6.01 x 11.13 x 0.28	719.1 (66.9)	691.2 (64.9)	7015 (3182)	90/270	2" - 230"	42020
720x1395	Multi/Bk	19'9" x 37'9" x 11"	6.01 x 11.5 x 0.28	742.7 (69.1)	714.3 (67.3)	7270 (3298)	90/279	2" - 230"	43465

