



---

**File #: 2023-0366, Version: 1**

---

## **Report to Mayor and City Council**

Tuesday, May 16, 2023

Consent

### **SUBJECT:**

**CONSIDER APPROVING THE PURCHASE OF FIFTEEN NEW PANAVIEW MULTI-SPORT SCOREBOARDS FROM DAKTRONICS, INC. (CITY COUNCIL)**

### **I. SUMMARY**

The Department of Community Services has determined that the scoreboards at Veterans Park, Foisia Park, Carson Park, Dolphin Park, Dominguez Park, Del Amo Park, Calas Park, Hemingway Park, and Stevenson Park require immediate replacement. All are near or past their life cycle, do not operate, or need to be repaired but spare parts are obsolete or hard to find.

Therefore, staff is requesting City Council approval for the purchase of fifteen (15) new PanaView Multi-Sport Scoreboards through a purchase order with Daktronics, Inc., an authorized dealer, utilizing the cooperative purchasing bidding exemption pursuant to CMC 2611(g) and Omnia Partners Cooperative Purchasing Agreement #R220601, available at <https://www.omniapartners.com/publicsector/suppliers/daktronics/contract->. The purchase is for a total not-to-exceed cost of \$152,458.21.

### **II. RECOMMENDATION**

TAKE the following actions:

1. WAIVE the formal bidding procedures as defined by the Carson Municipal Code (CMC) Section 2610; and
2. APPROVE the purchase of fifteen (15) new PanaView Multi-Sport Scoreboards and additional accessories/supplies as shown in Exhibit No. 1 from Daktronics, Inc., an authorized dealer, for a total not-to-exceed cost of \$152,458.21, by the Purchasing Manager via a purchase order pursuant to CMC Section 2611(g) (Cooperative Purchasing bidding exemption) and Omnia Partners Cooperative Purchasing Agreement #R220601.

### **III. ALTERNATIVES**

TAKE any other action the City Council deems appropriate, consistent with the requirements of applicable law.

#### **IV. BACKGROUND**

The City of Carson's Youth and Adult Sports programs offer many opportunities for people to participate in organized team sports. Current offerings include baseball, softball, basketball, flag football, and soccer, with different divisions within each sport for Youth Sports, and multiple seasons each year for Adult Sports. As such, functioning scoreboards are needed for the community to enjoy these events.

Community Services staff have identified scoreboards at Veterans Park, Foisia Park, Carson Park, Dolphin Park, Dominguez Park, Del Amo Park, Calas Park, Hemingway Park, and Stevenson Park that require immediate replacement. Among the many issues with the scoreboards are that they have become obsolete with technology advancing at a rapid rate. Additionally, they regularly require repairs, which are growing more difficult to make as certain parts are no longer being manufactured.

The new scoreboards are LED, which results in more energy efficiency and provide a significant cost savings over incandescent bulbs that require regular replacement. They have remote access resulting in more ease of use at multipurpose events and separating the scoreboards for youth tournaments. The scoreboards come with a five-year warranty on parts. Once ordered, the manufacturing period will take between four to eight weeks to complete.

Section 2611(g) of the Carson Municipal Code ("CMC") allows the City, through its Purchasing Manager, to dispense with competitive bidding processes to purchase materials, supplies, equipment, or services by utilizing a cooperative purchasing program engaged in by any local, county, State, or Federal public entity or entities. This policy applies even if the contracts and implementing agreements entered into by the participating entity or association under those cooperative purchasing programs were not entered into under a process that resulted in the contract being awarded to the lowest responsible and responsive bidder under CMC 2610(i), provided the bidder was selected in compliance with the competitive bidding or proposal process requirements of any participating entity or association within three years of City's approval of the City contract entered into with the selected bidder via cooperative purchasing. The City Council has decided that the benefits to the City of utilizing cooperative purchasing outweigh any incremental higher price that may be paid by the City in certain instances as a result of not soliciting directly utilizing the lowest responsible and responsive bidder standard under CMC 2610(i).

Omnia Partners is a cooperative purchasing agency established to allow participating municipal agencies to reduce the cost of procurement by leveraging the benefits of contract purchasing. Through solicitations, Omnia contracts bring considerable value and efficiencies to members through nationally leveraged contracted suppliers with access to the highest quality products and brands. Each solicitation and RFP contain language,

which includes all qualified customers in all fifty states.

It should be noted that the recommended procurement includes only purchase and delivery of the equipment, which is exempt from competitive bidding under CMC 2611(g). The procurement does not include installation of the equipment, which would be considered a public project subject to the bidding requirements of CMC 2612. The cooperative purchasing exemption is not available for public projects under CMC 2612. Accordingly, installation of the scoreboards will be performed pursuant to a separate procurement conducted in accordance with CMC 2612 at a later date. Given the 4-8 week manufacturing period, staff will pursue the procurement of installation services in the interim.

Finally, it should also be noted that CMC Section 2605(b)(ii) requires the City to use a written contract for purchases of any personal property, including materials, supplies, and equipment of \$25,000 or more over a fiscal year, unless the Purchasing Manager waives this requirement. The Purchasing Manager has waived the contract requirement for each of the equipment purchases, as shown in Exhibit 4. Accordingly, the City's standard form purchase order will be used for the purchase.

Funds in the Recreation Division have been identified to support this purchase. Staff is seeking the approval of the City Council to purchase the scoreboards for the park facilities.

## **V. FISCAL IMPACT**

Funds for this service are available in the FY 2022/23 General Fund budget under the following accounts:

101-90-950-150-6027 - \$3,054.60

101-90-950-252-6027 - \$20,000.00

101-90-950-256-6027 - \$20,000.00

101-90-950-254-6027 - \$14,989.60

101-90-950-258-6027 - \$14,989.60

101-90-950-355-6027 - \$14,989.60

101-90-950-152-6004 - \$59,500.00

101-90-950-260-6027 - \$4,934.81

Total = \$152,458.21

## **VI. EXHIBITS**

1. Quotation from Daktronics (pgs. 5 - 13)
2. Daktronics MS-918 Specifications (pgs. 14 - 21)
3. Daktronics RC-200 Product Specifications (pgs. 22 - 23)
4. Memo to waive formal bidding and formal contract requirements (pg. 24)

Prepared by: Tim Grierson, Recreation Superintendent; Freddy Loza, LBM Superintendent; Modesto Bolaños, Facility Maintenance Supervisor

Thank you for giving Daktronics the opportunity to be your equipment provider. It is important to us that we capture your vision for this project. The provided quote outlines your product selection. Please look it over carefully and work with your salesperson to review and answer any questions.

We look forward to partnering with you on this exciting opportunity!

### **Placing Order:**

When you are ready to place your order, contact your salesperson to obtain order documents. Daktronics will need the following information:

- Finalized equipment decision, including colors
- Delivery location/address
- Bill to information – Invoice Remit

If you are incorporating school or sponsorship logos into your project, please view [Daktronics Graphics File Standards](#) and submit with your order documents.

### **Additional Information:**

Our website and blog offer helpful information. Learn more about what our customers are talking about by visiting the following:

- Could your PA system use an upgrade?
  - Check out our [Sports Sound Systems](#).
- Wishing you could check off more items on your list of needs?
  - See how [Daktronics Sports Marketing](#) could add revenue to your budget.
- Curious what other schools have installed?
  - Look through our [Daktronics Sports Photo Gallery](#) for ideas.
- Did you know we have an in-house reliability laboratory?
  - Experience the testing your components undergo in our [Product Reliability Lab](#).
- Interested in financing options for orders over \$25,000?
  - View our [Getting Started Guide](#) to see what Daktronics offers.
- Want to view helpful information related to our products, in addition to stories on how other schools are developing students and generating revenue?
  - Check out our [blog](#).

# DAKTRONICS QUOTE # 806798-3-2

City of Carson  
Modesto Bolanos  
701 E Carson St  
Carson, CA USA 90745  
Phone:  
Fax:  
Email: mbolanos@carsonca.gov

10/May/2023  
Quote valid for: 120 days  
Terms: 30% with the order, 60% Payment  
before shipment, 10% Net 30 days from  
shipment  
Subject to Credit Review  
FCA: DESTINATION  
Delivery: Call for Production Time

## Reference: Baseball Fields - MS-918 - Omnia Partners Contract #R220601

Item No.	Model	Description	Qty	Price
1	Comments	Dominguez Park	1	
2	MS-918-R-PV-F	<b>PanaView® Multi-Sport Scoreboard;</b> <b>Scoreboard Color: _____; Caption Color: _____</b>  Cabinet Dimensions: 5' 0" H X 14' 0" W X 0' 8" D (Approx. Dimensions) Digit Type: PANAVIEW Digit Color: RED Max Power: 300 watts/display Weight: Unpackaged 220 lbs per display; Packaged 580 lbs per display	1	\$8,828.00
	*NOTE* This scoreboard is also available in Amber and White.		1	
	Stripe; 0A-1091-0183	Perimeter Border Stripe for MS-918 Scoreboards; Color: _____	1	
	AS-1600 Kit	All Sport® 1600 Control Console Kit	1	
	Outdoor Scoreboard Radio Communication (Transmitter)	Frequency of 2.4 GHz	1	
	Radio Receiver	Frequency of 2.4 GHz	1	
	Outdoor Scoreboard Wire Communication	Communication Type: Wire (Cable not included)	1	
	12VDC Trumpet Horn w/Power Supply	For Outdoor Scoreboards	1	
	RC-200 Handheld Controller Kit	Charger, Case and Inserts Included	1	
	RC-200 Scoreboard Receiver Kit	RC-200 Receiver (Base Station)	1	
	Y-HARNESS FOR DUAL RADIOS - W-2914	HARNESS; DUAL RADIO, 6P MINI M TO 2 6P MINI F	1	
	I-Beam Mounting Method (A)	For 2 I-Beams	1	
3	Comments	Hemingway Park	1	
4	MS-918-R-PV-F	<b>PanaView® Multi-Sport Scoreboard;</b> <b>Scoreboard Color: _____; Caption Color: _____</b>  Cabinet Dimensions: 5' 0" H X 14' 0" W X 0' 8" D (Approx. Dimensions) Digit Type: PANAVIEW Digit Color: RED Max Power: 300 watts/display Weight: Unpackaged 220 lbs per display; Packaged 580 lbs per display	1	\$8,828.00

# DAKTRONICS QUOTE # 806798-3-2

Cabinet Dimensions: 5' 0" H X 14' 0" W X 0' 8" D  
(Approx. Dimensions)  
Digit Type: PANAVIEW  
Digit Color: RED  
Max Power: 300 watts/display  
Weight: Unpackaged 220 lbs per display; Packaged 580 lbs per display

\*NOTE\* This scoreboard is also available in Amber and White.

Stripe; 0A-1091-0183 Perimeter Border Stripe for MS-918 Scoreboards; Color:\_\_\_\_\_ 1

AS-1600 Kit All Sport® 1600 Control Console Kit 1

Outdoor Scoreboard Radio Communication (Transmitter) Frequency of 2.4 GHz 1

Radio Receiver Frequency of 2.4 GHz 1

Outdoor Scoreboard Wire Communication Communication Type: Wire (Cable not included) 1

12VDC Trumpet Horn w/Power Supply For Outdoor Scoreboards 1

RC-200 Handheld Controller Kit Charger, Case and Inserts Included 1

RC-200 Scoreboard Receiver Kit RC-200 Receiver (Base Station) 1

Y-HARNESS FOR DUAL RADIOS - W-2914 HARNESS; DUAL RADIO, 6P MINI M TO 2 6P MINI F 1

I-Beam Mounting Method (A) For 2 I-Beams 1

5 **Comments** **Del Amo Park** 1

6 **MS-918-R-PV-F** **PanaView® Multi-Sport Scoreboard; Scoreboard Color: \_\_\_\_\_; Caption Color: \_\_\_\_\_** 2 **\$17,653.00**

Cabinet Dimensions: 5' 0" H X 14' 0" W X 0' 8" D  
(Approx. Dimensions)  
Digit Type: PANAVIEW  
Digit Color: RED  
Max Power: 300 watts/display  
Weight: Unpackaged 220 lbs per display; Packaged 580 lbs per display

\*NOTE\* This scoreboard is also available in Amber and White. 1

Stripe; 0A-1091-0183 Perimeter Border Stripe for MS-918 Scoreboards; Color:\_\_\_\_\_ 2

AS-1600 Kit All Sport® 1600 Control Console Kit 2

Outdoor Scoreboard Radio Communication (Transmitter) Frequency of 2.4 GHz 2

## DAKTRONICS QUOTE # 806798-3-2

	Radio Receiver	Frequency of 2.4 GHz	2	
	Outdoor Scoreboard Wire Communication	Communication Type: Wire (Cable not included)	2	
	12VDC Trumpet Horn w/Power Supply	For Outdoor Scoreboards	2	
	RC-200 Handheld Controller Kit	Charger, Case and Inserts Included	2	
	RC-200 Scoreboard Receiver Kit	RC-200 Receiver (Base Station)	2	
	Y-HARNESS FOR DUAL RADIOS - W-2914	HARNESS; DUAL RADIO, 6P MINI M TO 2 6P MINI F	2	
	I-Beam Mounting Method (A)	For 2 I-Beams	2	
7	<b>Comments</b>	<b>Foisia Park</b>	1	
8	<b>MS-918-R-PV-F</b>	<b>PanaView® Multi-Sport Scoreboard;</b> <b>Scoreboard Color: _____; Caption Color: _____</b>	2	<b>\$17,653.00</b>
	Cabinet Dimensions:	5' 0" H X 14' 0" W X 0' 8" D (Approx. Dimensions)		
	Digit Type:	PANAVIEW		
	Digit Color:	RED		
	Max Power:	300 watts/display		
	Weight:	Unpackaged 220 lbs per display; Packaged 580 lbs per display		
	*NOTE* This scoreboard is also available in Amber and White.		1	
	Stripe; 0A-1091-0183	Perimeter Border Stripe for MS-918 Scoreboards; Color: _____	2	
	AS-1600 Kit	All Sport® 1600 Control Console Kit	2	
	Outdoor Scoreboard Radio Communication (Transmitter)	Frequency of 2.4 GHz	2	
	Radio Receiver	Frequency of 2.4 GHz	2	
	Outdoor Scoreboard Wire Communication	Communication Type: Wire (Cable not included)	2	
	12VDC Trumpet Horn w/Power Supply	For Outdoor Scoreboards	2	
	RC-200 Handheld Controller Kit	Charger, Case and Inserts Included	2	
	RC-200 Scoreboard Receiver Kit	RC-200 Receiver (Base Station)	2	
	Y-HARNESS FOR DUAL RADIOS - W-2914	HARNESS; DUAL RADIO, 6P MINI M TO 2 6P MINI F	2	
	I-Beam Mounting Method (A)	For 2 I-Beams	2	
9	<b>Comments</b>	<b>Veterans Park</b>	1	



# DAKTRONICS QUOTE # 806798-3-2

10	MS-918-R-PV-F	<b>PanaView® Multi-Sport Scoreboard;</b> <b>Scoreboard Color: _____; Caption Color: _____</b>	2	\$17,653.00
		Cabinet Dimensions: 5' 0" H X 14' 0" W X 0' 8" D (Approx. Dimensions) Digit Type: PANAVIEW Digit Color: RED Max Power: 300 watts/display Weight: Unpackaged 220 lbs per display; Packaged 580 lbs per display		
	*NOTE* This scoreboard is also available in Amber and White.		1	
	Stripe; 0A-1091-0183	Perimeter Border Stripe for MS-918 Scoreboards; Color: _____	2	
	AS-1600 Kit	All Sport® 1600 Control Console Kit	2	
	Outdoor Scoreboard Radio Communication (Transmitter)	Frequency of 2.4 GHz	2	
	Radio Receiver	Frequency of 2.4 GHz	2	
	Outdoor Scoreboard Wire Communication	Communication Type: Wire (Cable not included)	2	
	12VDC Trumpet Horn w/Power Supply	For Outdoor Scoreboards	2	
	RC-200 Handheld Controller Kit	Charger, Case and Inserts Included	2	
	RC-200 Scoreboard Receiver Kit	RC-200 Receiver (Base Station)	2	
	Y-HARNESS FOR DUAL RADIOS - W-2914	HARNESS; DUAL RADIO, 6P MINI M TO 2 6P MINI F	2	
	I-Beam Mounting Method (A)	For 2 I-Beams	2	
11	Comments	Carson Park	1	
12	MS-918-R-PV-F	<b>PanaView® Multi-Sport Scoreboard;</b> <b>Scoreboard Color: _____; Caption Color: _____</b>	2	\$17,653.00
		Cabinet Dimensions: 5' 0" H X 14' 0" W X 0' 8" D (Approx. Dimensions) Digit Type: PANAVIEW Digit Color: RED Max Power: 300 watts/display Weight: Unpackaged 220 lbs per display; Packaged 580 lbs per display		
	*NOTE* This scoreboard is also available in Amber and White.		1	
	Stripe; 0A-1091-0183	Perimeter Border Stripe for MS-918 Scoreboards; Color: _____	2	
	AS-1600 Kit	All Sport® 1600 Control Console Kit	2	

## DAKTRONICS QUOTE # 806798-3-2

	Outdoor Scoreboard Radio Communication (Transmitter)	Frequency of 2.4 GHz	2	
	Radio Receiver	Frequency of 2.4 GHz	2	
	Outdoor Scoreboard Wire Communication	Communication Type: Wire (Cable not included)	2	
	12VDC Trumpet Horn w/Power Supply	For Outdoor Scoreboards	2	
	RC-200 Handheld Controller Kit	Charger, Case and Inserts Included	2	
	RC-200 Scoreboard Receiver Kit	RC-200 Receiver (Base Station)	2	
	Y-HARNESS FOR DUAL RADIOS - W-2914	HARNESS; DUAL RADIO, 6P MINI M TO 2 6P MINI F	2	
	I-Beam Mounting Method (A)	For 2 I-Beams	2	
13	<b>Comments</b>	<b>Calas Park</b>	1	
14	<b>MS-918-R-PV-F</b>	<b>PanaView® Multi-Sport Scoreboard;</b> <b>Scoreboard Color: _____; Caption Color: _____</b>	1	<b>\$8,828.00</b>
	Cabinet Dimensions:	5' 0" H X 14' 0" W X 0' 8" D (Approx. Dimensions)		
	Digit Type:	PANAVIEW		
	Digit Color:	RED		
	Max Power:	300 watts/display		
	Weight:	Unpackaged 220 lbs per display; Packaged 580 lbs per display		
	*NOTE* This scoreboard is also available in Amber and White.		1	
	Stripe; 0A-1091-0183	Perimeter Border Stripe for MS-918 Scoreboards; Color: _____	1	
	AS-1600 Kit	All Sport® 1600 Control Console Kit	1	
	Outdoor Scoreboard Radio Communication (Transmitter)	Frequency of 2.4 GHz	1	
	Radio Receiver	Frequency of 2.4 GHz	1	
	Outdoor Scoreboard Wire Communication	Communication Type: Wire (Cable not included)	1	
	12VDC Trumpet Horn w/Power Supply	For Outdoor Scoreboards	1	
	RC-200 Handheld Controller Kit	Charger, Case and Inserts Included	1	
	RC-200 Scoreboard Receiver Kit	RC-200 Receiver (Base Station)	1	
	Y-HARNESS FOR DUAL RADIOS - W-2914	HARNESS; DUAL RADIO, 6P MINI M TO 2 6P MINI F	1	

# DAKTRONICS QUOTE # 806798-3-2

	I-Beam Mounting Method (A)	For 2 I-Beams	1	
15	Comments	Dolphin Park	1	
16	MS-918-R-PV-F	PanaView® Multi-Sport Scoreboard; Scoreboard Color: _____; Caption Color: _____	2	\$17,653.00
	Cabinet Dimensions:	5' 0" H X 14' 0" W X 0' 8" D (Approx. Dimensions)		
	Digit Type:	PANAVIEW		
	Digit Color:	RED		
	Max Power:	300 watts/display		
	Weight:	Unpackaged 220 lbs per display; Packaged 580 lbs per display		
	*NOTE* This scoreboard is also available in Amber and White.		1	
	Stripe; 0A-1091-0183	Perimeter Border Stripe for MS-918 Scoreboards; Color: _____	2	
	AS-1600 Kit	All Sport® 1600 Control Console Kit	2	
	Outdoor Scoreboard Radio Communication (Transmitter)	Frequency of 2.4 GHz	2	
	Radio Receiver	Frequency of 2.4 GHz	2	
	Outdoor Scoreboard Wire Communication	Communication Type: Wire (Cable not included)	2	
	12VDC Trumpet Horn w/Power Supply	For Outdoor Scoreboards	2	
	RC-200 Handheld Controller Kit	Charger, Case and Inserts Included	2	
	RC-200 Scoreboard Receiver Kit	RC-200 Receiver (Base Station)	2	
	Y-HARNESS FOR DUAL RADIOS - W-2914	HARNESS; DUAL RADIO, 6P MINI M TO 2 6P MINI F	2	
	I-Beam Mounting Method (A)	For 2 I-Beams	2	
17	Comments	Stevenson Park	1	
18	MS-918-R-PV-F	PanaView® Multi-Sport Scoreboard; Scoreboard Color: _____; Caption Color: _____	2	\$17,653.00
	Cabinet Dimensions:	5' 0" H X 14' 0" W X 0' 8" D (Approx. Dimensions)		
	Digit Type:	PANAVIEW		
	Digit Color:	RED		
	Max Power:	300 watts/display		
	Weight:	Unpackaged 220 lbs per display; Packaged 580 lbs per display		
	*NOTE* This scoreboard is also available in Amber and White.		1	

## DAKTRONICS QUOTE # 806798-3-2

	Stripe; 0A-1091-0183	Perimeter Border Stripe for MS-918 Scoreboards; Color: _____	2	
	AS-1600 Kit	All Sport® 1600 Control Console Kit	2	
	Outdoor Scoreboard Radio Communication (Transmitter)	Frequency of 2.4 GHz	2	
	Radio Receiver	Frequency of 2.4 GHz	2	
	Outdoor Scoreboard Wire Communication	Communication Type: Wire (Cable not included)	2	
	12VDC Trumpet Horn w/Power Supply	For Outdoor Scoreboards	2	
	RC-200 Handheld Controller Kit	Charger, Case and Inserts Included	2	
	RC-200 Scoreboard Receiver Kit	RC-200 Receiver (Base Station)	2	
	Y-HARNESS FOR DUAL RADIOS - W-2914	HARNESS; DUAL RADIO, 6P MINI M TO 2 6P MINI F	2	
	I-Beam Mounting Method (A)	For 2 I-Beams	2	
19	<b>Taxes</b>	<b>10.25% - Subject to change</b>	<b>1</b>	<b>\$13,571.21</b>
20	<b>FREIGHT</b>	<b>Shipping to Carson, CA 90745 via Independent Carrier (flatbed trailer). Crane or telehandler required for unloading.</b>	<b>1</b>	<b>\$6,485.00</b>
<b>Services</b>				
21	<b>G5C5-W</b>	<b>Five Year Warranty - Parts Coverage - G5G5</b>	<b>1</b>	

<b>Total Price Including Applicable Tax:</b>	<b>\$152,458.21</b>
--	---------------------

Please reference listed sales literature: DD1628383 for G5C5-W, DD2167408 for MS-918-R-PV-F, DD3715714 for RC-200 Handheld Controller Kit, SL-04352 for AS-1600 Kit, SL-04370 for Outdoor Scoreboard Radio Communication (Transmitter), SL-04370 for Radio Receiver

### Options

*Please contact your sales representative for additional information*

<b>Angle Clamp Mounting Method (A)</b>	<b>For 2 Tubes (MS-918)</b>	<b>2</b>
<b>Angle Clamp Mounting Method (A)</b>	<b>For 2 Tubes (MS-918)</b>	<b>2</b>
<b>Angle Clamp Mounting Method (A)</b>	<b>For 2 Tubes (MS-918)</b>	<b>1</b>
<b>Angle Clamp Mounting Method (A)</b>	<b>For 2 Tubes (MS-918)</b>	<b>1</b>
<b>Angle Clamp Mounting Method (A)</b>	<b>For 2 Tubes (MS-918)</b>	<b>2</b>
<b>Angle Clamp Mounting Method (A)</b>	<b>For 2 Tubes (MS-918)</b>	<b>2</b>
<b>Angle Clamp Mounting Method (A)</b>	<b>For 2 Tubes (MS-918)</b>	<b>1</b>
<b>Angle Clamp Mounting Method (A)</b>	<b>For 2 Tubes (MS-918)</b>	<b>2</b>
<b>Angle Clamp Mounting Method (A)</b>	<b>For 2 Tubes (MS-918)</b>	<b>2</b>

## Leasing Program

If your purchase exceeds \$25,000, you may qualify for our leasing program allowing you more flexibility to spread out the cost of your Daktronics display over of a period up to five (5) years. Benefits of our leasing program include fixed rate financing, non-appropriation clause, no prepayment penalty, and customizable payment schedules. Plus, at the end of the lease, the equipment is yours to keep with no additional balloon payments.

Sample payment options as follows:

\$50,000 in total equipment cost = \$11,285 per year

\$100,000 in total equipment cost = \$22,568 per year

\$250,000 in total equipment cost = \$56,420 per year

**\*\*Payments based on 5 year/annual payment in advance structure. Leasing is subject to credit approval and agreed upon documentation with Daktronics lending partner. Contact your Daktronics representative for additional options and details.**

### Exclusions:

- |  |  |
|--|--|
| - Electrical Installation                | - Physical/Mechanical Installation                 |
| - Structure                              | - Foundation                                       |
| - Power                                  | - Hoist  |
| - Technical Support/Installation Support | - Engineering Certification                        |
| - Signal Conduit                         | - Labor to Pull Signal Cable                       |
| - Applicable Permits                     | - Electrical Switch Gear or Distribution Equipment |
| - Front End Equipment                    |  |

Unless expressly stated otherwise in this Quote # 806798-3 Rev 2 or the attachments, if Daktronics performs installation of the Equipment, the price quoted does not include the following services pertaining to physical installations: digging of footings (including dirt removal), any materials fabrication, installation of steel cages, rebar, or bolt attachments, or pouring and finishing of concrete footings. Those service may be provided for an additional cost beyond the quoted price. Purchaser shall be fully responsible for any and all additional costs plus overhead in the event anything unexpected of any nature whatsoever is found while digging the footings including but are not limited to rock, water, utility lines, pipes or any other unforeseen circumstance. The Purchaser acknowledges and agrees that it is fully responsible for all site conditions.

Prices and charges are subject to change by Daktronics at any time before the final agreement between the parties is effective. Ship Date will be determined after customer purchase order is received or agreement is signed or otherwise effective, shop drawings are approved (if required) and down payment is received (if required).

### Installation Responsibilities:

If applicable please reference Attachment A for Installation Responsibilities.

### Ad/ID Copy Approval Process

Customer shall provide digital artwork for advertising and identification panels, conforming to [Daktronics' graphic file standards](#), at the time of order.

Daktronics will create a proof of provided artwork and require approval of that proof three weeks prior to the initial anticipated ship date. Advertising and identification panels not approved in time, will be shipped without copy in Daktronics' standard finish.

---

Leie Sualua  
PHONE:  
FAX:  
EMAIL: [Leie.Sualua@daktronics.com](mailto:Leie.Sualua@daktronics.com)

---

Ashlin Wiebe  
PHONE: 605-692-0200  
FAX:  
EMAIL: [Ashlin.Wiebe@daktronics.com](mailto:Ashlin.Wiebe@daktronics.com)

### Terms And Conditions:

The Terms and Conditions which apply to this order available on request.

SL-02374 Standard Warranty and Limitation of Seller's Liability ([www.daktronics.com/terms\\_conditions/SL-02374.pdf](http://www.daktronics.com/terms_conditions/SL-02374.pdf))

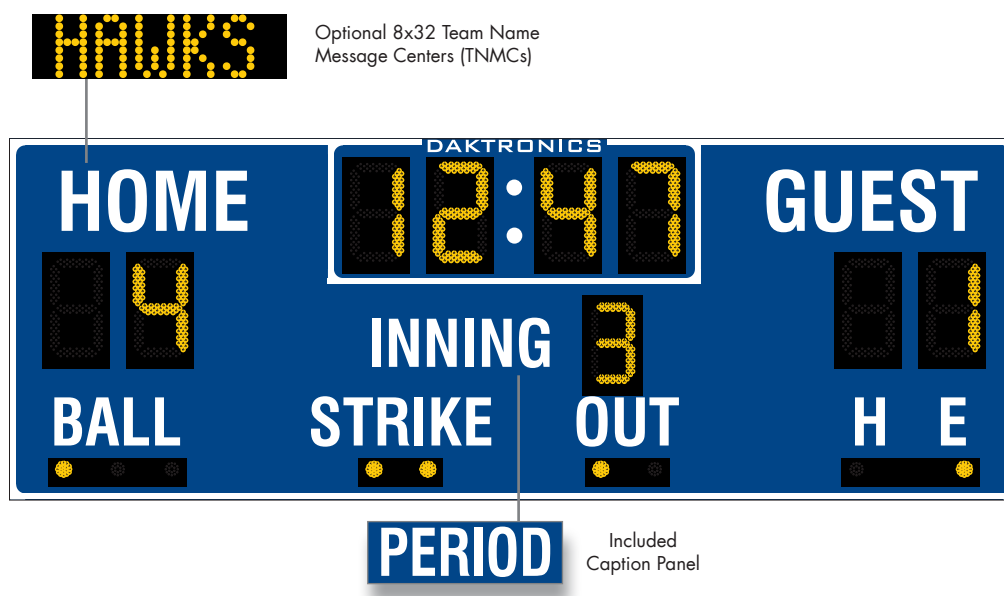
SL-02375 Standard Terms and Conditions of Sale ([www.daktronics.com/terms\\_conditions/SL-02375.pdf](http://www.daktronics.com/terms_conditions/SL-02375.pdf))

SL-07862 Software License Agreement ([www.daktronics.com/terms\\_conditions/SL-07862.pdf](http://www.daktronics.com/terms_conditions/SL-07862.pdf))

### NOTE:

The pricing may be adjusted for freight and taxes depending on the options selected.  
Please request order documents to submit your order.

# DAKTRONICS MS-918 PRODUCT SPECIFICATIONS



This outdoor LED multisport scoreboard displays period time to 99:59, HOME and GUEST scores to 99 and INNING or PERIOD to nine with included reversible caption panel. Indicators show BALL, STRIKE, OUT, H (hit) and E (error) in baseball mode. When period time is less than one minute, the scoreboard displays time to 1/10 of a second. Scoreboard shown with optional striping and amber PanaView® digits.

		VINYL CAPTIONS (STANDARD)	TNMCs & VINYL CAPTIONS
POWER (120 VAC)*	Red/Amber Digits	130 Watts, 1.1 Amps	200 Watts, 1.7 Amps
	White Digits	260 Watts, 2.2 Amps	420 Watts, 3.5 Amps
UNCRATED WEIGHT		265 lb (120 kg)	345 lb (156 kg)
DIMENSIONS		5'-0" H x 14'-0" W x 8" D (1.52 m, 4.27 m, 203 mm)	

\*Scoreboard requires a dedicated circuit. Models with 240 VAC power at half the indicated amperage are also offered (International Use Only).

## DIGITS & INDICATORS

- INNING/PERIOD digit is 15" (381 mm) high. All other digits are 18" (457 mm) high. All indicators are 2" (51 mm) in diameter.
- Select red, amber, or white LED digits and indicators.
- Scoreboard features robust weather-sealed digits (see [DD2495646](#)).
- Digits may be dimmed for night viewing.

## CAPTIONS

- HOME and GUEST captions are 10" (254 mm) high. All other captions are 8" (203 mm) high.
- Standard captions are vinyl, applied to the display face. INNING and PERIOD captions are on a reversible panel.
- Optional TNMCs are 10.6" (269 mm) high.

## DISPLAY COLOR

Choose from 150+ colors (from Martin Senour® paint book) at no additional cost.

## CONSTRUCTION

Alcoa aluminum alloy 5052 for excellent corrosion resistance

## PRODUCT SAFETY APPROVAL

ETL-listed to UL 48, tested to CSA standards, and CE-labeled

## OPERATING TEMPERATURES

- Display: -22° to 122° Fahrenheit (-30° to 50° Celsius)
- Console: 32° to 130° Fahrenheit (0° to 54° Celsius)

WWW.DAKTRONICS.COM E-MAIL: SALES@DAKTRONICS.COM

201 Daktronics Drive, PO Box 5128, Brookings, SD 57006  
Phone: 1-800-325-8766 or 605-692-0200 Fax: 605-697-4746  
DD2167408 091720 Page 1 of 8



# DAKTRONICS MS-918 PRODUCT SPECIFICATIONS

CONTROL CONSOLES	CONTROL OPTIONS
<b>All Sport® 1600*</b> (see <a href="#">SL-04352</a> )  <i>*May be upgraded to</i> <b>All Sport 5000</b> (see <a href="#">SL-03991</a> )	<b>Wired (standard):</b> One-pair shielded cable of 22 AWG minimum is required. A cover plate with mounted connector and standard 2" x 4" x 2" (51 mm x 102 mm x 51 mm) outlet box is provided. Connector mates with signal cable from control console. <hr/> <b>Wireless (optional):</b> 2.4 GHz spread spectrum radio features 64 non-interfering channels and 8 broadcast groups (see <a href="#">SL-04370</a> ).
<b>RC-200</b> (see <a href="#">DD3715714</a> )	<b>Optional</b> wireless handheld controller features 2.4 GHz spread spectrum radio with 64 non-interfering channels and 8-10 hours of operation via internal rechargeable battery.
<b>DAK Score &amp; MX-1</b> (see <a href="#">DD3888368</a> )	CUSTOMER-SUPPLIED mobile device or tablet with DAK Score app installed communicates via <b>Bluetooth®</b> wireless technology to an MX-1 Interface Box that controls the scoreboard through 2.4 GHz radio or wired connection.

**Note:** All Sport 5000 or DAK Score required for Team Name Message Centers.

## SEGMENT TIMER MODE

The segment timer mode is ideal for keeping practices on schedule. The horn at the end of a segment allows coaches and athletes to focus on the practice and to listen for the horn when it is time to change drills (see [SL-04004](#)).

## TIME OF DAY MODE

This scoreboard features a Time of Day (TOD) mode that allows it to act as a clock when the control console is unplugged or off. Refer to the scoreboard installation manual for instructions on how to enable the Time of Day mode.

## MOUNTING

Scoreboard is typically mounted on two vertical beams or poles. Hardware to mount scoreboard on two beams is included; hardware for more beams is at additional cost. Standard mounting uses I-beam clamps. Optional mounting method using angle brackets is also offered; maximum beam width is 12" (305 mm) and maximum beam depth is 22" (559 mm). Refer to attached drawings for more information on mounting methods.

## SERVICE ACCESS

Digit panels and electronics are serviced from the front of the scoreboard.

## GENERAL INFORMATION

Scoreboard provides scoring capabilities for two teams. 100% solid state electronics are housed in an all aluminum cabinet. Scoreboard is shipped in one section. Scoreboard power is to be provided on a dedicated circuit to prevent loss of game information due to failure of another component on the circuit. Specifications and pricing are subject to change without notice.

## ADVERTISING/IDENTIFICATION PANELS

### Backlit & Non-Backlit:

1'-6" H x 14'-0" W (457 mm, 4.27 m)  
 2'-0" H x 14'-0" W (610 mm, 4.27 m)  
 2'-6" H x 14'-0" W (762 mm, 4.27 m)

For additional non-backlit panel sizes, see [SL-03761](#).

## OPTIONS & ACCESSORIES

- Scoreboard border striping
- Multiple caption and striping colors (see [DD2101644](#))
- Team name caption in place of HOME \*
- Team names on changeable panels \*
- Programmable Team Name Message Centers (see [DD1696958](#))
- Reversible HALF and QTR caption panel
- Horn
- Individual digit protective screens (see [SL-04939](#))
- Protective netting (see [DD2690927](#))
- Optional angle bracket mounting method
- Advertising/identification panels
- Decorative accents
- Electronic message centers and video displays in multiple sizes

\* Not available with TNMCs

## FOR ADDITIONAL INFORMATION

- Installation Specifications: DWG-1157187 (attached)
- Standard I-beam Mounting: DWG-1052565 (attached)
- LVX I-Beam Mounting: DWG-3918361 (attached)
- Optional Pole Mounting: DWG-1048184 (attached)
- Component Locations: DWG-1074633 (attached)
- Architectural Specifications: See [SL-05167](#)

The Bluetooth® word mark and logos are registered trademarks owned by the Bluetooth SIG, Inc. and any use of such marks by Daktronics, Inc. is under license.

WWW.DAKTRONICS.COM E-MAIL: SALES@DAKTRONICS.COM

201 Daktronics Drive, PO Box 5128, Brookings, SD 57006  
 Phone: 1-800-325-8766 or 605-692-0200 Fax: 605-697-4746  
 DD2167408 091720 Page 2 of 8



# DAKTRONICS MS-918 PRODUCT SPECIFICATIONS

## ALTERNATE CAPTIONS & SCORING MODES

### Standard Vinyl Captions

(PERIOD & INNING on included caption panel)



Baseball Mode



Lacrosse/Field Hockey Mode

### Optional Vinyl Captions on Reversible Panel



Football Mode



Soccer Mode



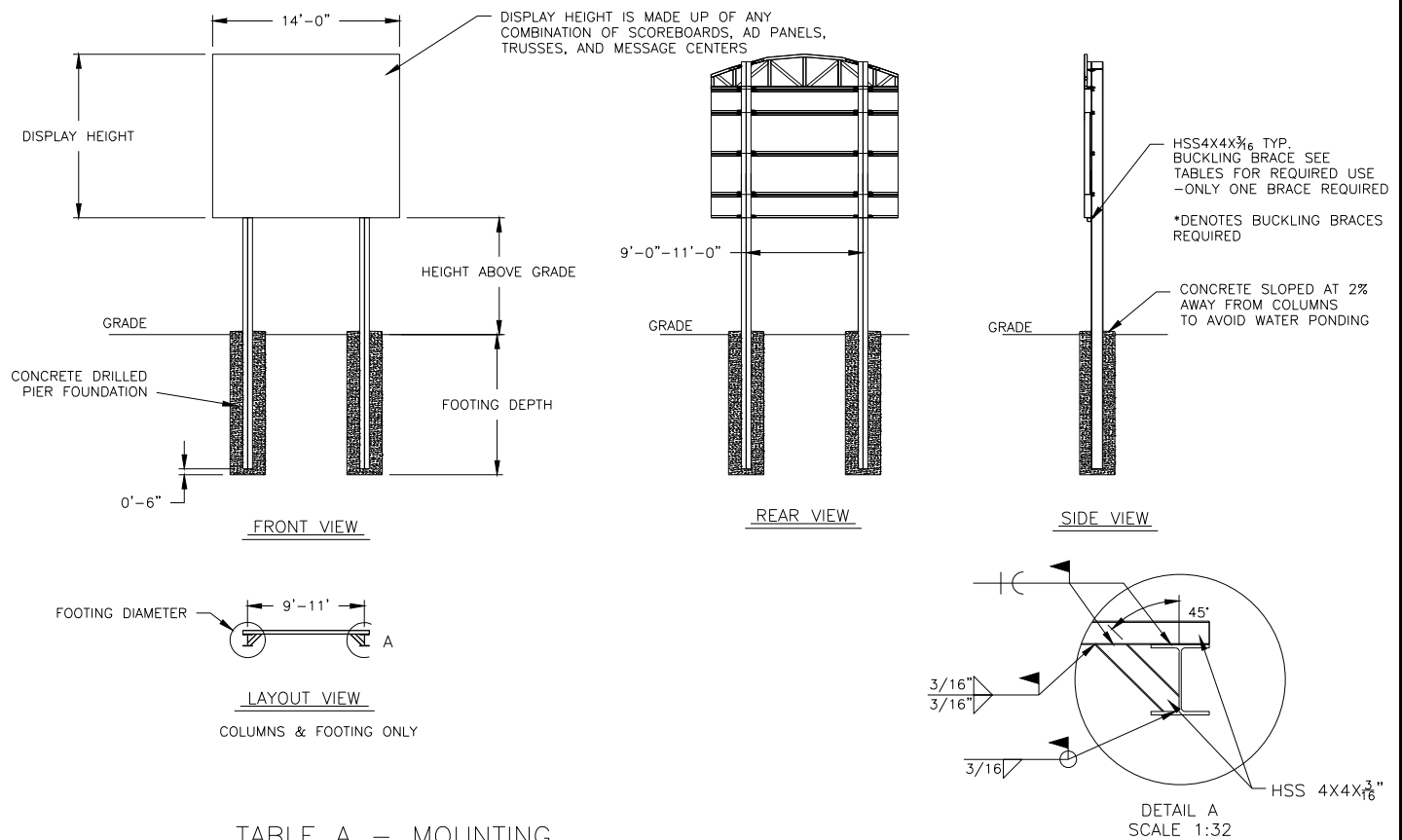


TABLE A - MOUNTING

EXPOSURE B

HEIGHT ABOVE GRADE = 10'						HEIGHT ABOVE GRADE = 15'					
DISPLAY HEIGHT (FT)		DESIGN WIND VELOCITY				DISPLAY HEIGHT (FT)		DESIGN WIND VELOCITY			
		115 MPH	130 MPH	150 MPH	170 MPH			115 MPH	130 MPH	150 MPH	170 MPH
6	COLUMN FOOTING	W6X15 2.0'X6.5'	W8X21 2.0'X7.0'	W8X21 2.0'X8.0'	W10X22 2.0'X8.5'	6	COLUMN FOOTING	W8X24 2.0'X7.5'	W8X24 2.0'X8.0'	W8X28 2.0'X9.0'	W8X31 2.0'X9.5'
8	COLUMN FOOTING	W10X22 2.0'X7.5'	W8X24 2.0'X8.0'	W8X24 2.0'X9.0'	W8X28 2.0'X10.0'	8	COLUMN FOOTING	W8X31 2.0'X8.5'	W8X31 2.0'X9.0'	W10X33 3.0'X8.5'	W10X39 3.0'X9.5'
10	COLUMN FOOTING	W8X24 2.0'X8.5'	W8X28 2.0'X9.0'	W8X31 2.0'X10.0'	W10X33 3.0'X9.5'	10	COLUMN FOOTING	W8X24* 2.0'X9.0'	W12X26* 2.0'X10.0'	W10X33* 3.0'X9.5'	W16X36* 3.0'X11.0'
12	COLUMN FOOTING	W8X28 2.0'X9.0'	W8X31 2.0'X10.0'	W10X39 3.0'X9.5'	W12X40 3.0'X11.0'	12	COLUMN FOOTING	W12X26* 2.0'X10.0'	W14X30* 3.0'X9.5'	W16X36* 3.0'X11.0'	W14X43* 3.0'X12.0'
14	COLUMN FOOTING	W10X26* 2.0'X10.0'	W10X26* 3.0'X9.0'	W12X30* 3.0'X10.0'	W14X34* 3.0'X11.0'	14	COLUMN FOOTING	W10X30* 3.0'X9.5'	W10X49* 3.0'X10.0'	W16X40* 3.0'X11.0'	W14X48* 3.0'X13.0'

FOOTING DIMENSIONS = DIAMETER X DEPTH  
\* DENOTES BUCKLING BRACE REQUIRED

EXPOSURE C

HEIGHT ABOVE GRADE = 10'				HEIGHT ABOVE GRADE = 15'			
DISPLAY HEIGHT (FT)		DESIGN WIND VELOCITY		DISPLAY HEIGHT (FT)		DESIGN WIND VELOCITY	
		115 MPH	140 MPH			115 MPH	140 MPH
6	COLUMN FOOTING	W8X21 2.0'X7.5'	W8X24 2.0'X8.5'	6	COLUMN FOOTING	W12X26 2.0'X8.5'	W8X31 2.0'X9.5'
8	COLUMN FOOTING	W8X24 2.0'X8.5'	W8X28 2.0'X10.0'	8	COLUMN FOOTING	W8X31 2.0'X9.5'	W10X39 3.0'X9.5'
10	COLUMN FOOTING	W8X31 2.0'X9.5'	W10X33 3.0'X9.5'	10	COLUMN FOOTING	W12X30* 3.0'X9.0'	W16X36* 3.0'X11.0'
12	COLUMN FOOTING	W10X33 3.0'X9.0'	W12X40 3.0'X10.5'	12	COLUMN FOOTING	W14X34* 3.0'X9.5'	W16X40* 3.0'X11.0'
14	COLUMN FOOTING	W12X26* 3.0'X9.5'	W14X34* 3.0'X11.0'	14	COLUMN FOOTING	W14X38* 3.0'X11.0'	W14X48* 3.0'X13.0'

FOOTING DIMENSIONS = DIAMETER X DEPTH  
\* DENOTES BUCKLING BRACE REQUIRED

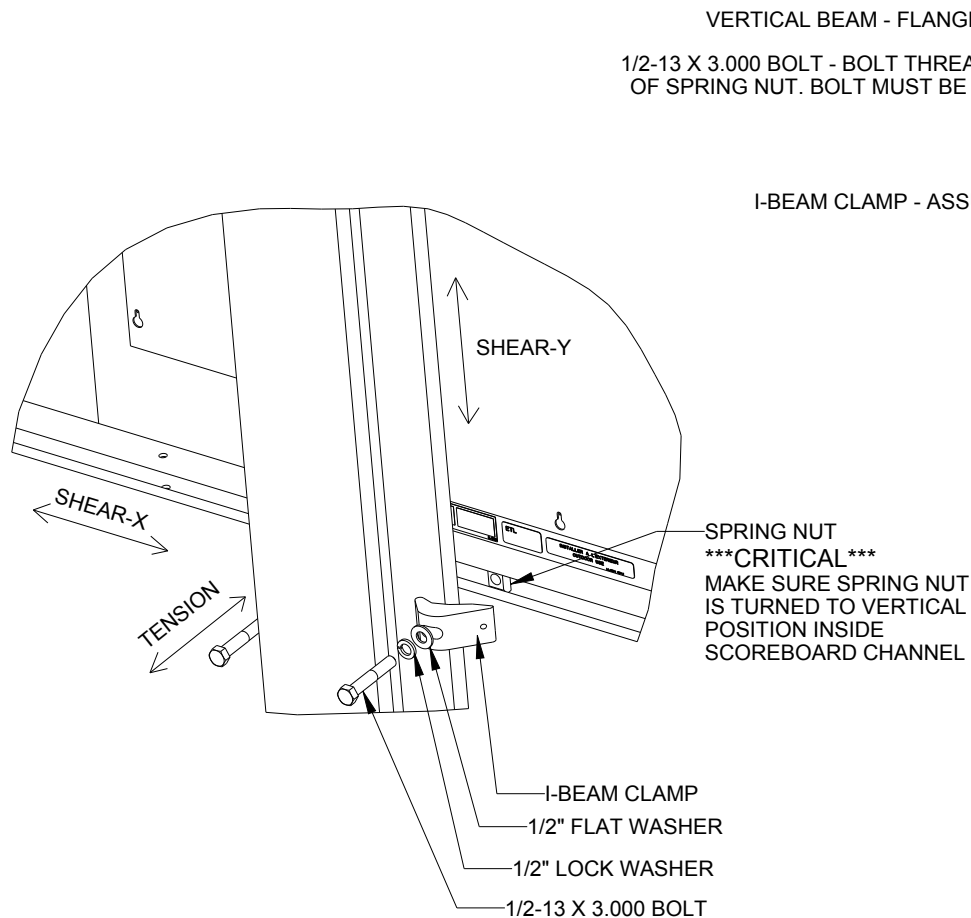
NOTE:  
-REFER TO NOTE 7 FOR EXPOSURE CATEGORY DEFINITIONS.

NOTES:

- FOOTING AND COLUMN SIZES ARE SUGGESTIONS ONLY, PROVIDED TO ASSIST WITH ESTIMATING INSTALLATION COSTS AND ARE NOT INTENDED FOR CONSTRUCTION PURPOSES. THE DESIGN MUST BE CERTIFIED BY A PROFESSIONAL ENGINEER LICENSED IN THE STATE OF THE INSTALLATION BEFORE THEY CAN BE USED FOR FABRICATION OR ERECTION.
- INTERNATIONAL BUILDING CODE 2012 USED IN DESIGN OF COLUMNS AND FOOTINGS WITH IMPORTANCE FACTOR=1,  $K_z=1.0$ ,  $K_d=0.85$ ,  $G=0.85$ . SEISMIC DESIGN WAS NOT CONSIDERED.
- FOOTING DIMENSIONS ARE BASED ON ASSUMED SOIL CLASS 4 (ALLOWABLE LATERAL BEARING PRESSURE OF 150 psf).
- STRUCTURAL STEEL IS GRADE A992 (50 ksi) STEEL. CONCRETE SHALL HAVE A MINIMUM 28 DAY COMPRESSIVE STRENGTH OF 2500 psi.
- THE AVERAGE DISPLAY WEIGHT FOR A LAYOUT CAN NOT EXCEED 8 PSF.
- DAKTRONICS INC. IS NOT RESPONSIBLE FOR STRUCTURES DESIGNED AND INSTALLED BY OTHERS.
- LOCAL BUILDING OFFICIALS SHOULD BE CONTACTED TO DETERMINE THE WIND SPEED AND EXPOSURE CATEGORY FOR THE PROPOSED SIGN LOCATION. THE EXPOSURE CATEGORY C IS DEFINED AS:  
  
EXPOSURE B - URBAN AND SUBURBAN AREAS, OR OTHER TERRAIN WITH NUMEROUS SPACED OBSTRUCTIONS HAVING THE SIZE OF SINGLE-FAMILY DWELLINGS OR LARGER. THESE CONDITIONS MUST PREVAIL FOR A DISTANCE FROM THE SIGN OF AT LEAST 2,600 ft OR 20 TIMES THE SIGN HEIGHT, WHICHEVER IS GREATER  
  
EXPOSURE C - OPEN TERRAIN WITH SCATTERED OBSTRUCTIONS HAVING HEIGHTS GENERALLY LESS THAN 30 FT. THIS CATEGORY INCLUDES FLAT OPEN COUNTRY, GRASSLANDS, AND ALL WATER SURFACES IN HURRICANE PRONE REGIONS.
- FOR SPECIFIC PRODUCT DETAILS ON WEIGHT, MOUNTING, ETC. REFER TO THE INDIVIDUAL PRODUCT SPECIFICATION SHEETS.

<p>DAKTRONICS, INC. BROOKINGS, SD 57006</p>		<p>THE CONCEPTS EXPRESSED AND DETAILS SHOWN ON THIS DRAWING ARE CONFIDENTIAL AND PROPRIETARY. DO NOT REPRODUCE BY ANY MEANS WITHOUT THE EXPRESSED WRITTEN CONSENT OF DAKTRONICS, INC. COPYRIGHT 2013 DAKTRONICS, INC.</p>	
		DO NOT SCALE DRAWING	
PROJ: OUTDOOR SCOREBOARD INSTALLATION			
TITLE: 14' WIDTH SCOREBOARD INSTALLATION SPECS			
DESIGN: RSCHWAR		DRAWN: RSCHWAR	
SCALE: 1/16"=1'		DATE: 27 NOV 13	
SHEET	REV	JOB NO:	FUNC-TYPE-SIZE
	02	P1647	E-10-A
			1157187

REV 02	DATE: 27 OCT 15	UPDATED WIDE FLANGE AND FOUNDATION VALUES	BY: AMP
REV 01	DATE: 23 JUL 14	UPDATED CLAMPS IN REAR AND SIDE VIEW AND ADDED 170 MPH WIND SPEC COLUMN	BY: TJT



EXPLODED REAR ISOMETRIC VIEW

## STANDARD MOUNTING METHOD

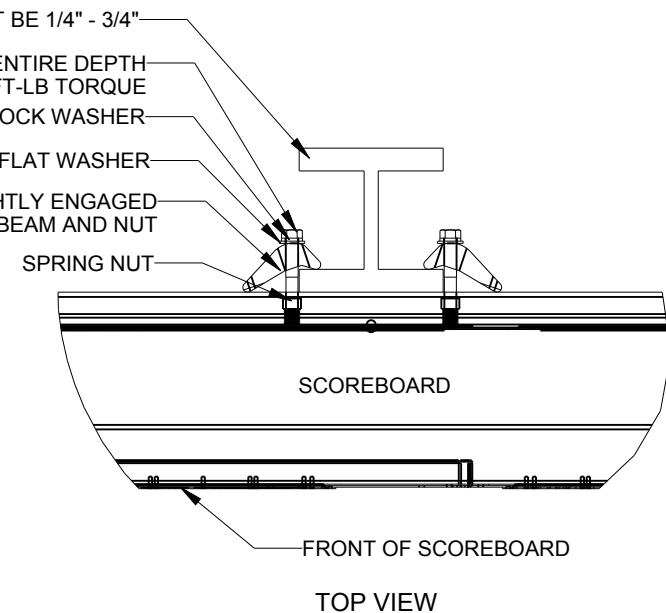
### MOUNTING INSTRUCTIONS:

1. PLACE SPRING NUTS INTO SCOREBOARD CHANNEL IN APPROXIMATE LOCATION OF VERTICAL BEAMS
2. LIFT SCOREBOARD INTO POSITION
3. MAKE SURE THE 1/2-13 BOLTS ARE AS CLOSE TO THE I-BEAM FLANGES AS POSSIBLE
4. WHEN SCOREBOARD IS ADJUSTED TO FINAL DESIRED POSITION, TIGHTEN BOLTS FIRMLY
5. IF FLANGE THICKNESS IS MORE THAN 3/4" THICK LONGER BOLTS WILL BE REQUIRED AT THE CUSTOMER'S EXPENSE.

## STRUCTURAL NOTES



ALLOWABLE CAPACITY PER EACH CLAMP:  
SHEAR = 160 LBS  
TENSION = 2300 LBS

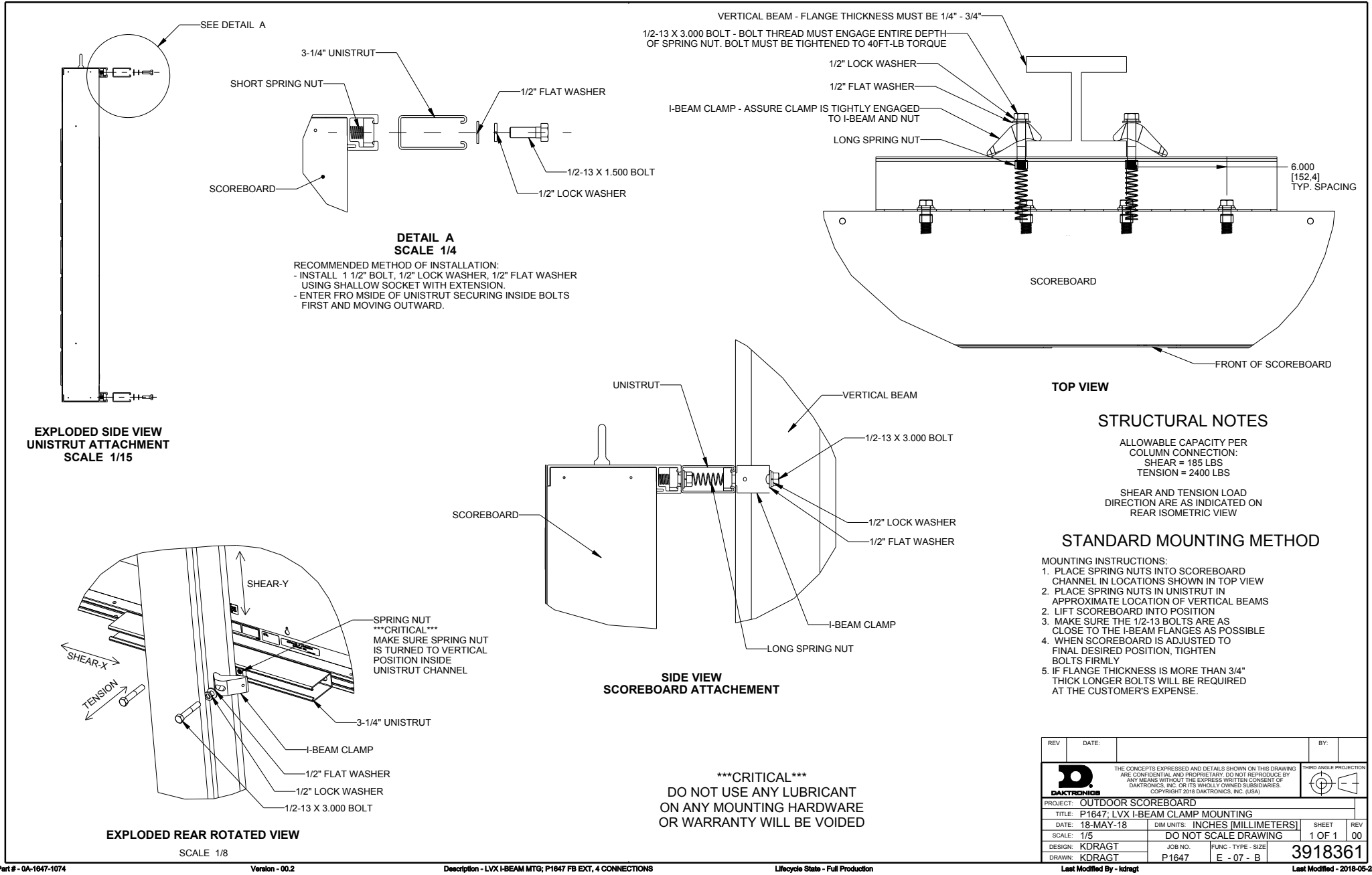
SHEAR AND TENSION LOAD  
DIRECTION ARE AS INDICATED ON  
REAR ISOMETRIC VIEW

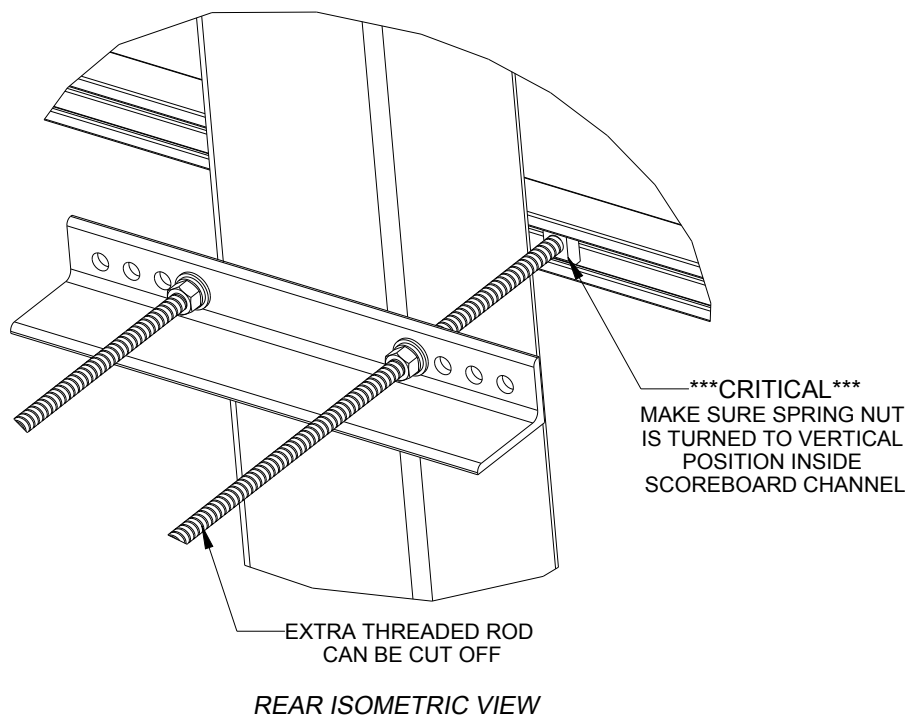
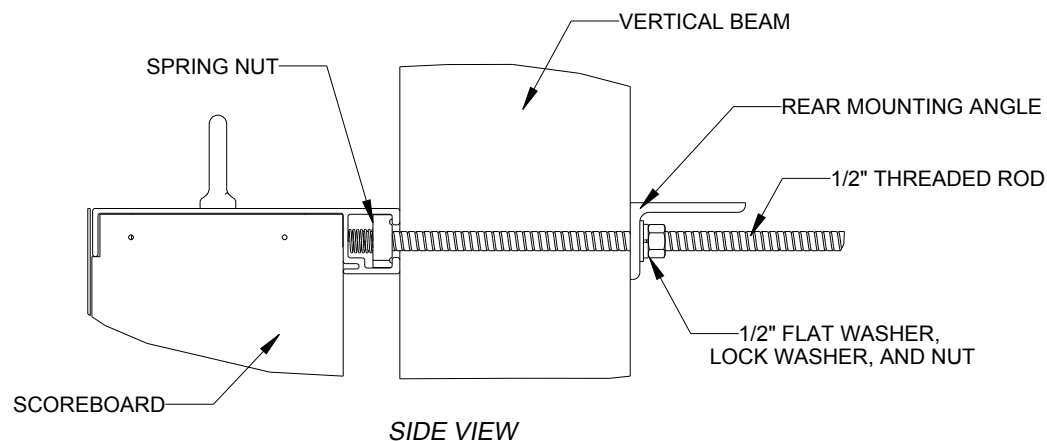


\*\*\*CRITICAL\*\*\*  
DO NOT USE ANY LUBRICANT  
ON ANY MOUNTING HARDWARE  
OR WARRANTY WILL BE VOIDED

05	22 DEC 15	PER EC-22871; ADDED LUBRICANT NOTE	PJS 18704
04	06 JAN 14	ADDED ALLOWABLE TENSION AND SHEAR CAPACITY DETAILS	JAVA
03	23 OCT 13	PER EC-12382; CHANGED BOLT TORQUE FROM 30 FT-LB TO 40 FT-LB	NJM
02	07 MAR 12	ADDED STANDARD MOUNTING METHODS NOTES	KDD
01	21 FEB 12	CHANGED ROCKER TO I-BEAM	KDD
REV	DATE:		BY:

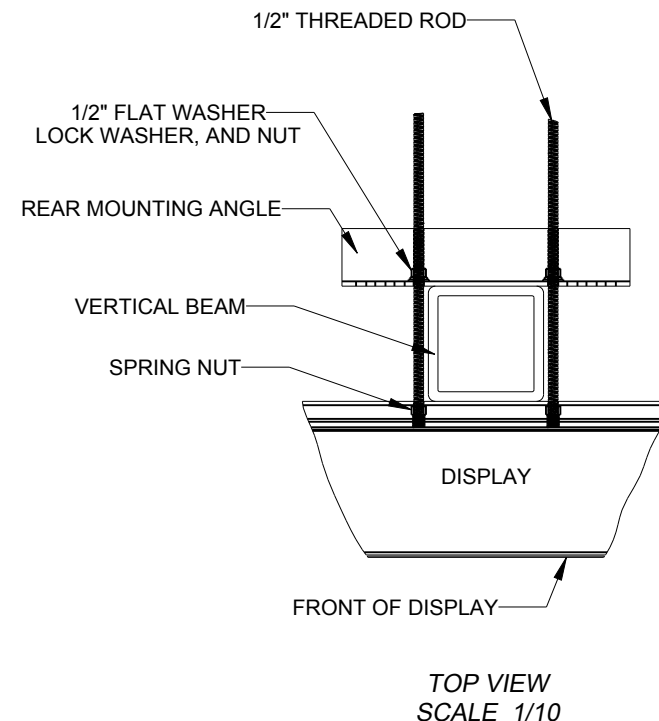
		THE CONCEPTS EXPRESSED AND DETAILS SHOWN ON THIS DRAWING ARE CONFIDENTIAL AND PROPRIETARY. DO NOT REPRODUCE BY ANY MEANS WITHOUT THE EXPRESS WRITTEN CONSENT OF DAKTRONICS, INC. OR ITS WHOLLY OWNED SUBSIDIARIES. COPYRIGHT 2016 DAKTRONICS, INC. (USA)			
PROJECT: OUTDOOR SCOREBOARD					
TITLE: P1647; I-BEAM CLAMP MOUNTING					
DATE: 22-DEC-15		DIM UNITS: INCHES [MILLIMETERS]		SHEET	REV
SCALE: 1/8		DO NOT SCALE DRAWING		1 OF 1	05
DESIGN: MCARSRU		JOB NO.	FUNC - TYPE - SIZE	1052565	
DRAWN: MCARSRU		P1647	E - 07 - A		





**STRUCTURAL NOTES:**  
- BOLT TORQUE: 30 FT-LB

**NOTES:**  
- THREADED RODS RUN ALONG BOTH SIDES OF BEAM  
- RODS DO NOT PASS THROUGH THE FLANGES OF THE BEAM  
- NO DRILLING NECESSARY  
- MAKE SURE SPRING NUT IS PERPENDICULAR TO CHANNEL OPENING ON SCOREBOARD

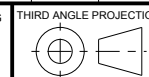


**\*\*\*CRITICAL\*\*\***  
**DO NOT USE ANY LUBRICANT**  
**ON ANY MOUNTING HARDWARE**  
**OR WARRANTY WILL BE VOIDED**

04	22 DEC 15	PER EC-22871; ADDED LUBRICANT WARNING	PJS 18704	
03	03 JULY 13	ADDED STRUCTURAL NOTE	TTF	
02	20 SEP 12	PER EC-7114; REMOVED CHAMFER FROM 0M-133259	LMG	
01	06 OCT 11	REPLACED VERTICAL I-BEAM WITH 6" X 6" SQUARE TUBE	JAVA	
REV	DATE:		BY:	



THE CONCEPTS EXPRESSED AND DETAILS SHOWN ON THIS DRAWING ARE CONFIDENTIAL AND PROPRIETARY. DO NOT REPRODUCE BY ANY MEANS WITHOUT THE EXPRESS WRITTEN CONSENT OF DAKTRONICS, INC. OR ITS WHOLLY OWNED SUBSIDIARIES. COPYRIGHT 2016 DAKTRONICS, INC. (USA)



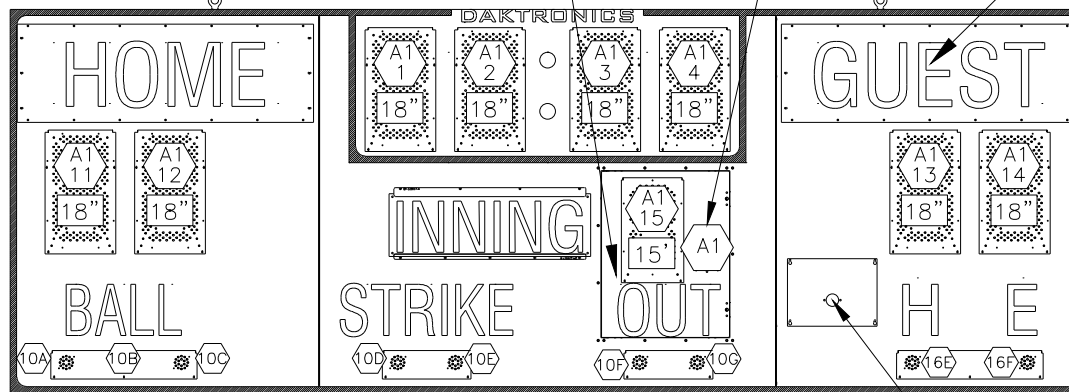
PROJECT: OUTDOOR SCOREBOARDS				
TITLE: P1647; POLE MOUNTING OPTIONS				
DATE: 22-DEC-15	DIM UNITS: INCHES [MILLIMETERS]		SHEET	REV
SCALE: 1/5	DO NOT SCALE DRAWING		1 OF 1	04
DESIGN: DOPPELT	JOB NO.	FUNC - TYPE - SIZE	1048184	
DRAWN: DOPPELT	P1647	E - 10 - A		

MS-918-R/A/W

PRIMARY DRIVER (A1)  
KNOCKOUTS FOR 1/2" CONDUIT  
SIGNAL OPTION ON THIS DRIVER  
(WIRE, FIBER, OR RADIO)

OPTIONAL RADIO

OPTIONAL TNMCS  
8x32-34mm



LAYOUT VIEW

OPTIONAL HORN

NOTES:

A1 1 = LED DRIVER NUMBER &  
LED DRIVER CONNECTOR  
WIRED TO THAT DIGIT.

18" = DIGIT SIZE

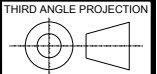
10E = SEGMENT DESIGNATION

A1 = DRIVER NUMBER

REV 05	DATE: 11 AUG 20	PER CN-107905 REMOVED LABELS TO MOVE TO NEW STANDARD	BY: TAN
REV 04	DATE: 20 DEC 18	PER CN-70022; MOVED DAKTRONICS LABEL TO TOP SECTION OF SCOREBOARD	BY: JDG
REV 03	DATE: 21 MAR 18	PER CN-51506, UPDATED FRSH T LAYOUT	BY: KDD
REV 02	DATE: 9 AUG 16	PER EC-21300; UPDATE HORN LOCATION	BY: MJR
REV 01	DATE: 27 FEB 15	PER EC-17119, REMOVED DETAIL A ADDED SIGNAL OPTION NOTE CHANGED SLAVE AND MASTER DRIVER NAMES	BY: KDB



THE CONCEPTS EXPRESSED AND DETAILS SHOWN ON THIS DRAWING  
ARE CONFIDENTIAL AND PROPRIETARY. DO NOT REPRODUCE BY  
ANY MEANS WITHOUT THE EXPRESS WRITTEN CONSENT OF  
DAKTRONICS, INC. OR ITS WHOLLY OWNED SUBSIDIARIES.  
COPYRIGHT 2016 DAKTRONICS, INC. (USA)



PROJECT: OUTDOOR LED SCOREBOARDS			
TITLE: COMPONENT LOCATION: MS-918-201X-R/A/W-PV-F			
DATE: 7 NOV 11	DIM UNITS: INCHES [MILLIMETERS]	SHEET	REV 05
SCALE: 1=30	DO NOT SCALE DRAWING		
DESIGN: KDRAGT	JOB NO. P1647	FUNC - TYPE - SIZE R - 08 - A	1074633
DRAWN: ZRYKHUS			

# DAKTRONICS RC-200 PRODUCT SPECIFICATIONS



The RC-200 handheld controller is a truly wireless device that can control a variety of Daktronics standard scoreboards. For baseball/softball, the umpire operating the RC-200 unit, as well as the fans and players, can instantaneously see the ball and strike count on the scoreboard. For tennis, multiple RC-200 units control multi-court scoreboards.

The handheld controller operates one scoreboard at a time with a single scoreboard receiver. Additional receivers may be used for certain applications, such as when two play clocks are located at opposite ends of a football field.

The handheld unit operates using a 2.4 GHz radio with internal antenna and features 64 selectable channels. Rechargeable Ni-MH (Nickel Metal Hydride) battery provides 8-10 hours of operation on a full charge.

DIMENSIONS	WEIGHT	POWER
4.7" H x 2.7" W x 1.2" D (119 mm, 69 mm, 31 mm)	0.4 lb (0.18 kg)	<ul style="list-style-type: none"><li>• 2000 mAh rechargeable Ni-MH battery</li><li>• Power supply for charging and/or 120 VAC operation</li></ul>

## DISPLAY

128 x 64 graphic LCD non-backlit screen with adjustable contrast

## OPERATING RANGE

10' – 500' (3 – 152 m)

## RECOMMENDED TEMPERATURES

- **Operation:** 14° to 149° Fahrenheit (-10° to 65° Celsius)
- **Charging:** 32° to 104° Fahrenheit (0° to 40° Celsius)
- **Storage:** -4° to 113° Fahrenheit (-20° to 45° Celsius)

## CONSTRUCTION

Durable ABS plastic

## OPTIONS & ACCESSORIES

- Multi-unit charger (charges up to 6 controllers at once)
- Carrying/operation case (includes belt clip, wrist and neck strap)

## FOR ADDITIONAL INFORMATION

- Manual: See [DD3572889](#)

[WWW.DAKTRONICS.COM](http://WWW.DAKTRONICS.COM) E-MAIL: [SALES@DAKTRONICS.COM](mailto:SALES@DAKTRONICS.COM)

201 Daktronics Drive, PO Box 5128, Brookings, SD 57006  
Phone: 1-800-325-8766 or 605-692-0200 Fax: 605-697-4746  
DD3715714 112118 Page 1 of 2



# DAKTRONICS RC-200 PRODUCT SPECIFICATIONS

## SUPPORTED SCOREBOARDS & TIMERS

BASEBALL	BASKETBALL	MULTISPORT	TENNIS		TIMERS
BA-618	BB-2101*	MS-915	TN-2501	TN-2603*	TI-218 (two-digit, play clock only)
BA-624	BB-2102*	MS-918*	TN-2503*	TN-2604*	TI-2003/TI-2203 (two-digit, play clock only)
BA-2010	BB-2105*	MS-2002*	TN-2504*	TN-2605*	TI-2010 (two-digit, play clock only)
BA-2017	BB-2106*	MS-2006*	TN-2505*	TN-2609	TI-2012 (segment timer)
BA-2515	BB-2116*	MS-2013	TN-2560**	TN-2650**	TI-2015/TI-2215 (two-digit, play clock only)
BA-2518	BB-2121*	MS-2025	TN-2561**	TN-2651**	TI-2019 (four-digit, pitch time/TOD only)
BA-2618	BB-2122	MS-2113	TN-2562**	TN-2652**	TI-2024 (two-digit, play clock only)
BA-2715	BB-2142	MS-2126	TN-2563**	TN-2653**	TI-2032 (four-digit, pitch time/TOD only)
BA-2718		MS-3918		TN-2654**	TI-2034 (segment timer & remote play clock)
				TN-2655**	TI-2035 (segment timer & remote play clock)
					TI-2101, TI-2102, TI-2200 (four-digit)
<b>FOOTBALL</b>	<b>SOCCER</b>				
	SO-918				
FB-824	SO-2918				
FB-4005					

\* To be controlled via RC-200, these models must NOT have programmable Team Name Message Centers (TNMCs) installed.  
 \*\* Multi-court Tennis scoreboards with TNMCs require DakTennis software. Refer to their product specs for control options.

## SCORING MODES

Basketball	Baseball	Segment Timer
TIME 60:00 H- 0 G- 0	B=0 S=0 O=0 G- 0 I- 1 H- 0	SEGMENT: 01 TIME: 05:00
Clock/Score	Football	Play Clock/ Pitch Timer
TIME 12:00 H- 0 G- 0	TIME 15:00 H- 0 G- 0 Q1	TIME :30 PLAY CLOCK OFF
Tennis	Judge's Console	
TOP= BOT= SET 1 T= 0 B= 0	JUDGE 1:10.0 DIVE 301A DD1.8	

Not shown: Remote Start/Stop, Goal Judge, Rodeo



---

**TO:** JOSILLA TOGIOLA, PURCHASING MANAGER  
FREDDY LOZA, LBM SUPERINTENDENT  
TIM GRIERSON, RECREATION SUPERINTENDENT  
  
ARLINGTON RODGERS, DIRECTOR OF PUBLIC WORKS  
MIKE WHITTAKER, DIRECTOR OF COMMUNITY SERVICES AND PARKS  
AND RECREATION  
PURCHASING WAIVER - FORMAL BIDDING & WRITTEN CONTRACT  
MAY 8, 2023

---

To expedite purchase of equipment needed by the Community Services and Public Works Department, Departments are requesting the Purchasing Manager to authorize waiver of the following, as permitted in the City's purchasing ordinance referenced below:

☐ **Exceptions to Bidding Requirements for Purchases Other Than for Public Projects.**

*Section 2611(g). TThe City, through the Purchasing Manager, may purchase materials, supplies, equipment, or services through a joint powers or other cooperative purchasing program with any local, county, State, or Federal public entity or entities, or any association of public agencies, including the California League of Cities, the California State Association of Counties, and the National Conference of Mayors, even if the contracts and implementing agreements entered into by the participating entity or association under those cooperative purchasing programs were not entered into pursuant to a process that resulted in the contract being awarded to the lowest responsible and responsive bidder under CMC 2610(i); provided, that the selected bidder was selected in compliance with the competitive bidding or proposal process requirements of any participating entity or association within three (3) years of City's approval of the City contract entered into with the selected bidder via cooperative purchasing. The price of the materials, supplies, equipment, or services may either be lower or higher than it would be if solicited directly by the City utilizing the lowest responsible and responsive bidder standard under CMC 2610(i).*

☐ **Written Contract**

*2605(b)(ii) If the estimated value of an individual purchase is \$25,000 or greater over a fiscal year, then a separate written contract, in a form approved by the City Attorney, shall be required in addition to the purchase order requirement under subsection (a) of this Section. However, the Purchasing Manager has the sole discretion to waive this requirement.*

Formal bidding and a written contract would normally be required because the purchase is for an amount \$25,000 or more; here, the amount is \$152,458.21.

This purchase will be procured in accordance with the following cooperative purchasing agreement:


**Omnia Contract #R220601, between Omnia Partners and Daktronics**

The equipment to be purchased through the Omnia cooperative purchasing program is as follows:

**Various multi-sport scoreboards and additional accessories/supplies for the City's Park facilities**

This memorandum has been reviewed and approved by the City Attorney's Office

Request Approved:

  
\_\_\_\_\_  
Josilla Togiola, Purchasing Manager

May 8, 2023