



REGIONAL RECYCLED WATER PROGRAM

City of Carson Pipeline Alignment Evaluation

City Council Meeting

6-8-2022

Exhibit No. 1

Purpose

Working collaboratively with communities impacted by construction of the Regional Recycled Water Program, respectfully seeking input, and building trust and positive relationships along the way.



**LOS ANGELES COUNTY
SANITATION DISTRICTS**
Converting Waste Into Resources



Partnering with You: City of Carson is key to the success of the Program



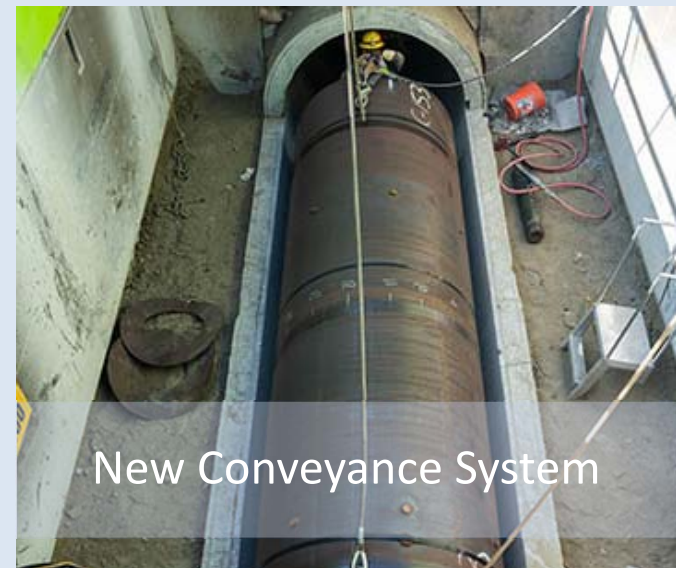
Joint Water Pollution Control
Plant

In Carson



Advanced Purification Center

In Carson



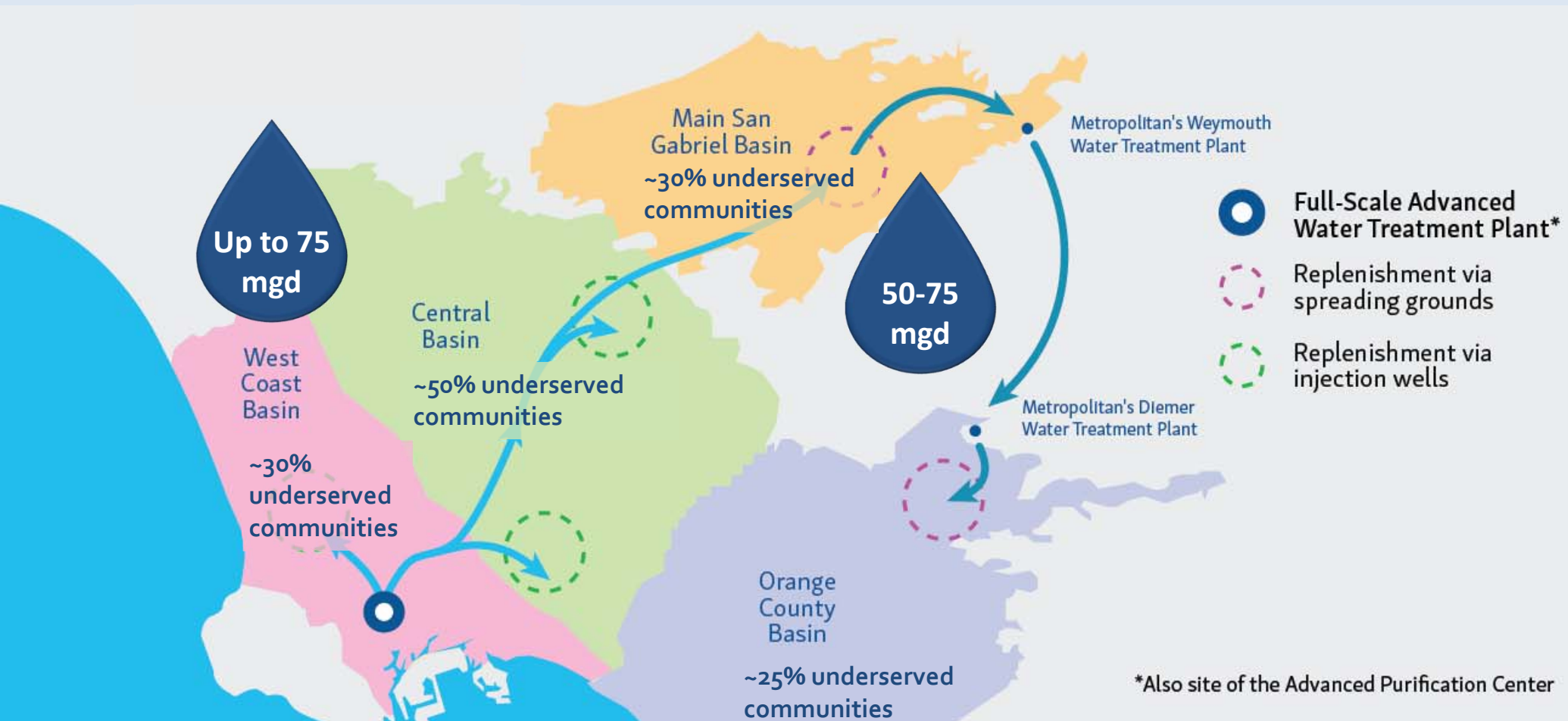
New Conveyance System

5-6 miles in Carson
40-50 miles total
84 in. diameter



FULL-SCALE PROGRAM

Groundwater Basins Served



PROGRAM SCHEDULE

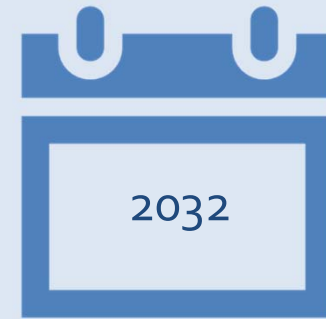
* 2028 Olympics



Environmental
Planning



Design and
Construction



Start-up and
Operations

Opportunities to accelerate this timeline



Successful Collaboration Benefits All Parties

Many opportunities to explore



**Water Supply
Reliability**



**Economic
Benefits**



**Project Labor
Agreement**



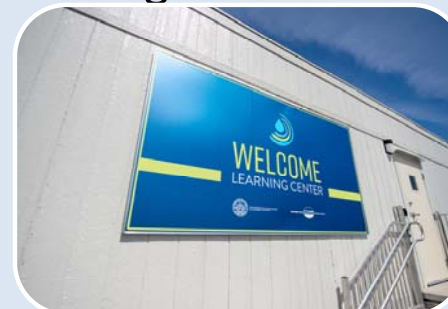
Recycled Water



**Business &
Infrastructure Support**



**Workforce
Development**



**Community
Resources**



School Program

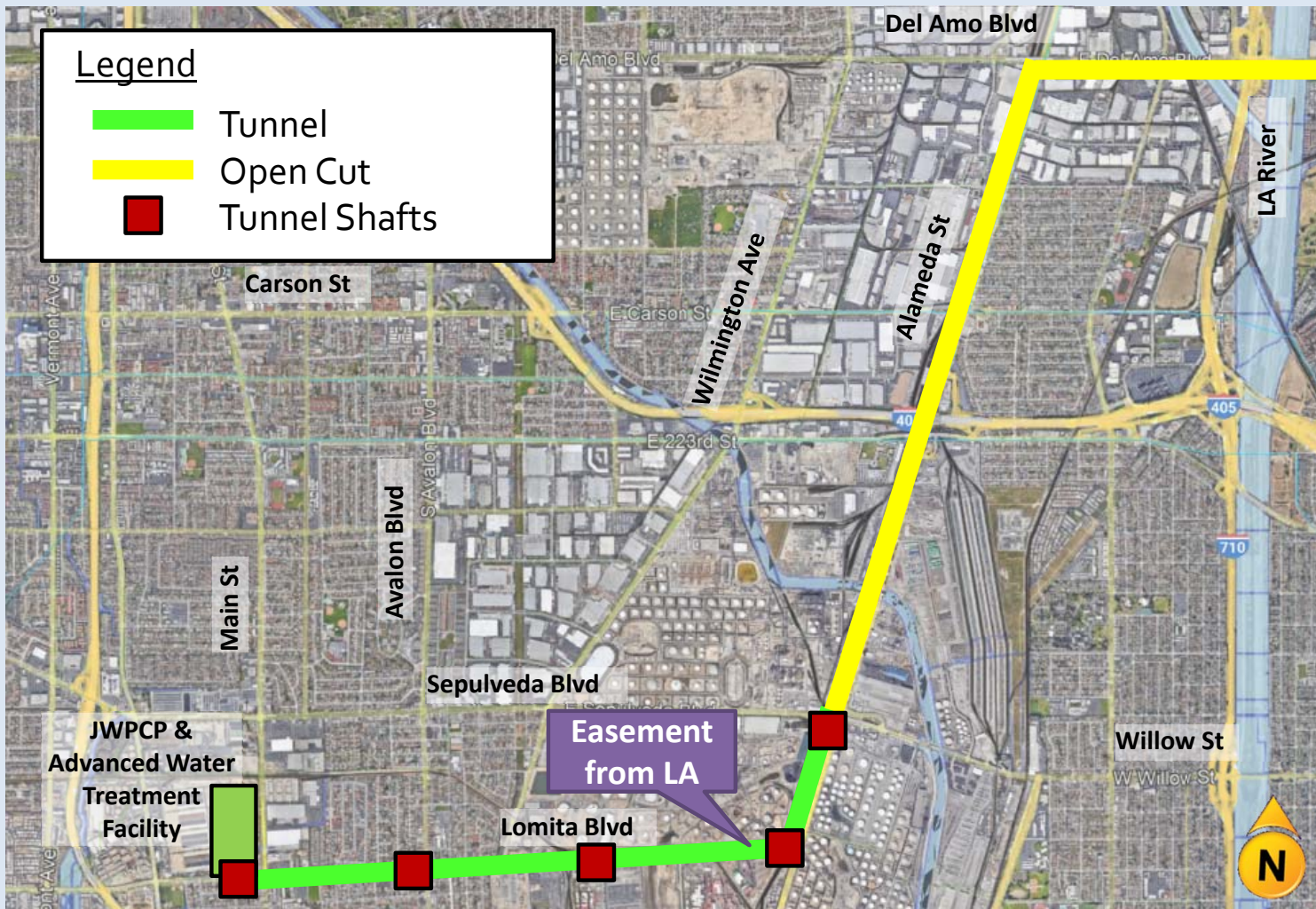
Working in Partnership with the City of Carson



- Pipeline Alignment Considerations:
 - Traffic impacts
 - Business access & continuity
 - Residential impacts
 - Proximity to schools
 - Street improvements
 - Coordination with other City projects/goals
 - Olympics



Lomita Blvd to Alameda St – Overview



3-5 years to construct
5.6 miles

Affects 3 schools

Extensive tunneling &
secondary containment

Heavy underground
utility congestion

Prior evidence of
contaminated soils



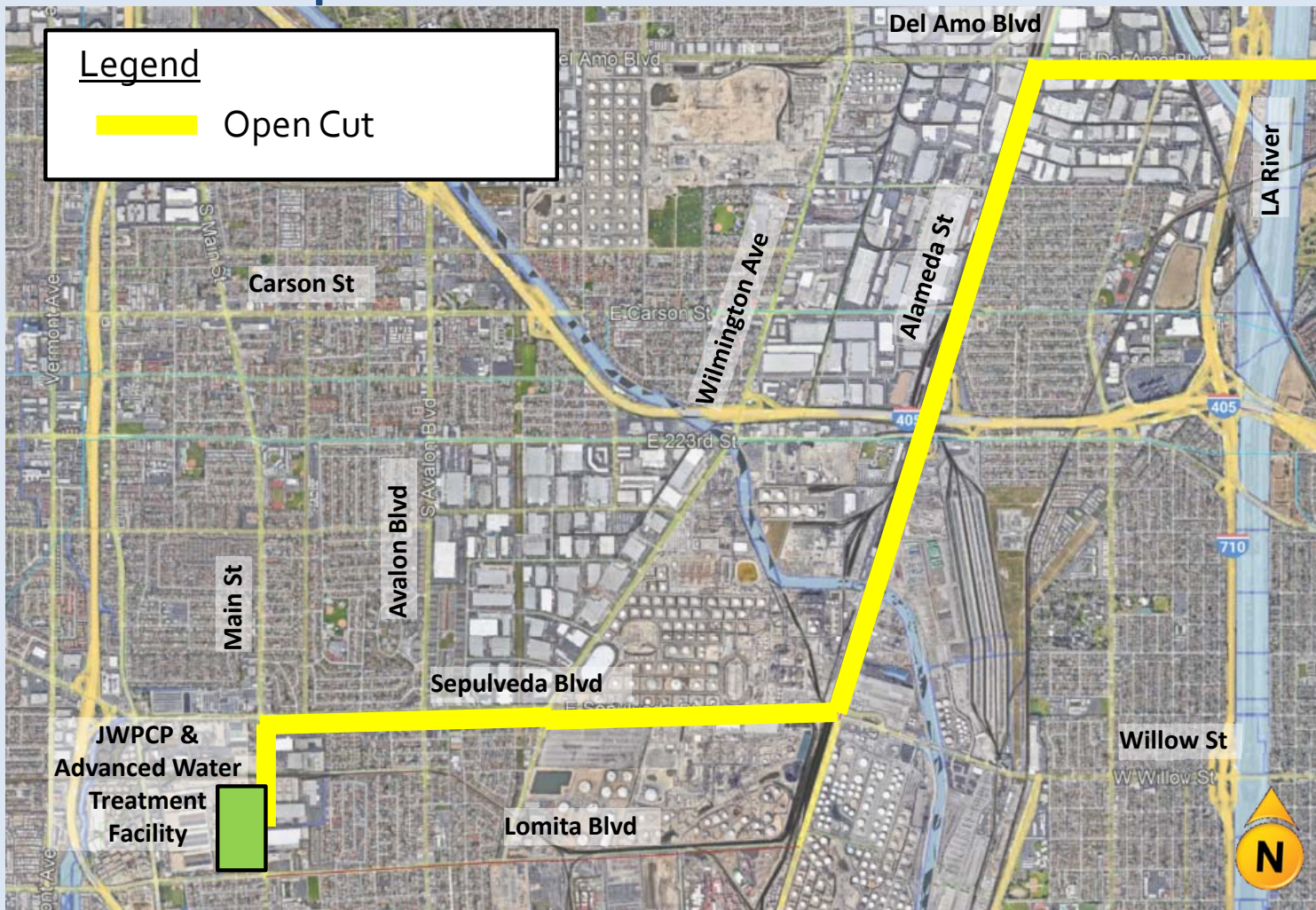
Example of Tunnel Access Pit



Second Lower Feeder Access Site
Photo courtesy of Black & Veatch, 78" steel water pipe



Sepulveda Blvd to Alameda St - Overview



1-3 years to construct
5 miles

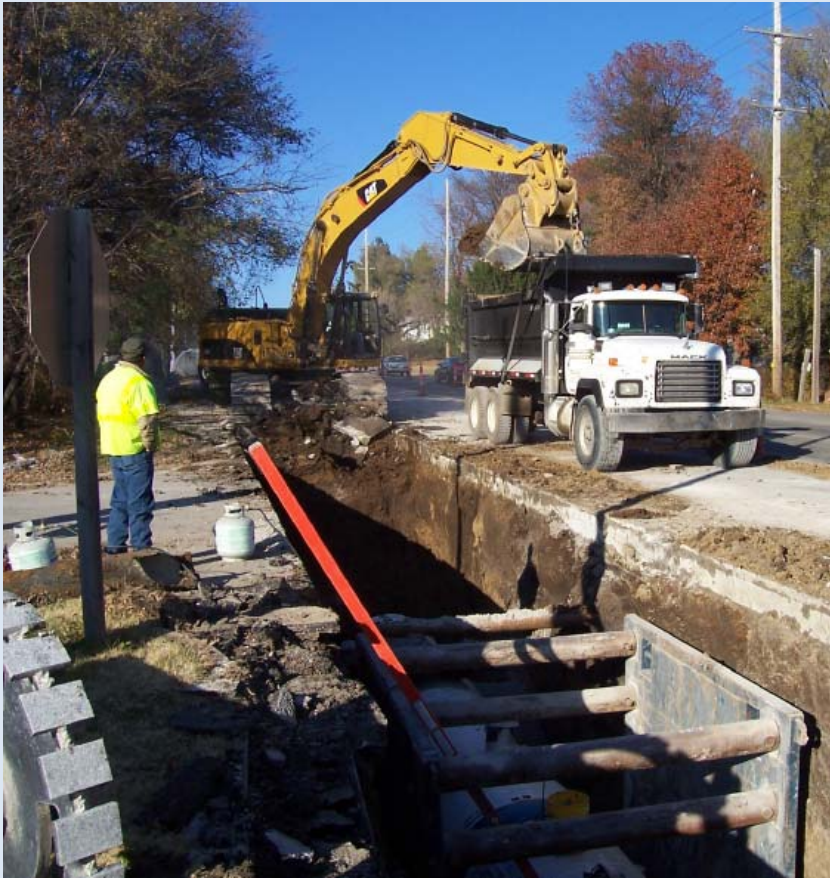
Affects 1 senior care facility; Home Depot & Albertsons

Manageable utility relocation & traffic control

More impacts to street surfaces



Example of Open Cut Construction

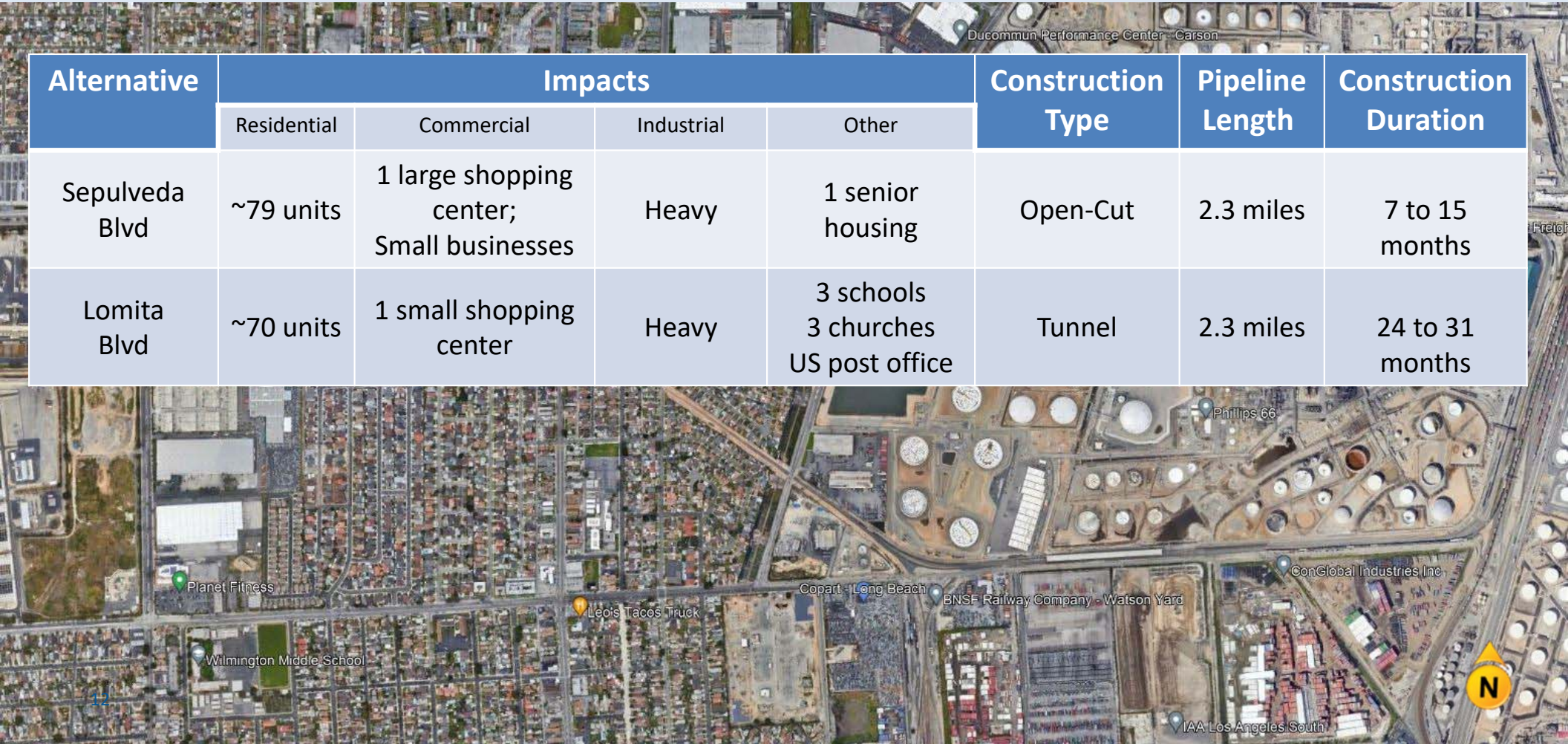


Typical Open Cut Construction Work Area
Photos courtesy of Black & Veatch, 66" steel water pipe



Summary of Pipeline Alternatives

| Alternative | Impacts | | | | Construction Type | Pipeline Length | Construction Duration |
|----------------|-------------|--|------------|---|-------------------|-----------------|-----------------------|
| | Residential | Commercial | Industrial | Other | | | |
| Sepulveda Blvd | ~79 units | 1 large shopping center; Small businesses | Heavy | 1 senior housing | Open-Cut | 2.3 miles | 7 to 15 months |
| Lomita Blvd | ~70 units | 1 small shopping center | Heavy | 3 schools 3 churches US post office | Tunnel | 2.3 miles | 24 to 31 months |



NEXT STEPS

- Confirm alignment through the City of Carson
 - Sepulveda Blvd is preferable over Lomita Blvd
 - Transition to Alameda St
 - Metropolitan to work with City to optimize construction plans
 - Metropolitan commits to minimize potential construction impacts
- Conduct utility investigations
- Continue coordination with City
 - Potential for jobs development
 - Address potential small business impacts
 - Innovation and outreach efforts



mwdh2o.com/rrwp



@mwdh2o

